

CERTIFICATE OF LOCATION OF GOVERNMENT CORNER

NORTH QUARTER Corner of Section 27, Township 40, Range 25, 4TH P.M.

STATE OF MINNESOTA, County of KANABEC

At the corner location shown on the sketch:
On 11/ /2003 Set a Kanabec County Monument.

Kanabec County U.S. Survey Feet Coordinates
NAD 1983, HARN 1996 Adjustment
Obtained by RTK GPS Observation

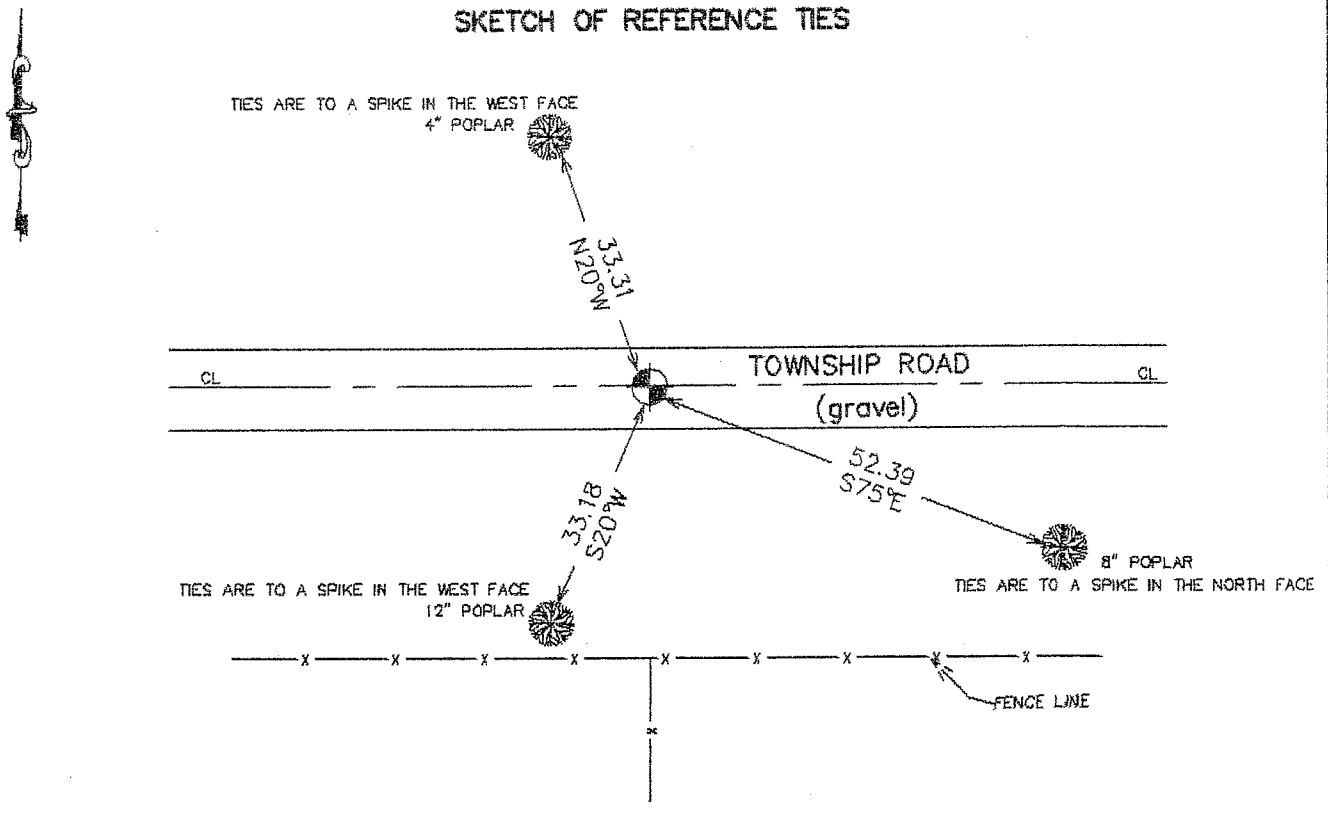
Northing= 175048.039

Easting= 361945.427

Note: NAD 1983, HARN 1996 Adjustment
coordinates are NOT compatible with
NAD 1983 coordinates

Note: 1 Meter=3937/1200 U.S. Survey Feet

SKETCH OF REFERENCE TIES



Statement of evidence relative to this corner location is on back of page.

I hereby certify that this document and the data contained herein was prepared by me or under my direct supervision.

Ernest J. Hud
Signature

1-31-2004
Date

Registration No. 9808

- Land Surveyor, Professional Engineer
 County Surveyor, County Engineer

OFFICE OF THE COUNTY RECORDER

County of _____

I hereby certify that this document was filed in the County Recorder's office at _____ M. on the _____ day of _____ A.D., 20____

County Recorder _____

BY _____ Deputy

DOCUMENT NO. _____

STATEMENT OF EVIDENCE

All of the original governmental bearing trees are now gone.

Original corner was set by Government Surveyor Silas Barnard in November 1855.

On Certificate of Location number 106 George Jenkes states he set an iron rod at the North Quarter corner on December 14, 1925 and took ties to this iron. Evidence of the iron rod or bearing trees no longer remain.

In November 2003 we did a survey around Sections 22 and 27 tying in monuments and lines of occupation and setting control. We excavated a 10 foot and 20 foot area on the centerline of a township road and on old fence line going south. We excavated 1 foot into natural ground and did not find any evidence.

Clinton Stucky owner of the Northwest Quarter testified that he had always used the fence line on his property line.

We accepted the extension of this fence line and the centerline of the township road as the best perpetuation of this corner. This position falls 9 feet east of a split between Northwest and Northeast corners of Section 27. We set a Kanbec County Monument, took ties, and established Kanbec County coordinates on this corner.