

OFFICE OF THE COUNTY RECORDER

County of _____

I hereby certify that this document was filed in the County Recorder's office at _____ M. on the _____ day of _____ A.D., 20____

County Recorder _____

BY _____ Deputy

DOCUMENT NO. _____

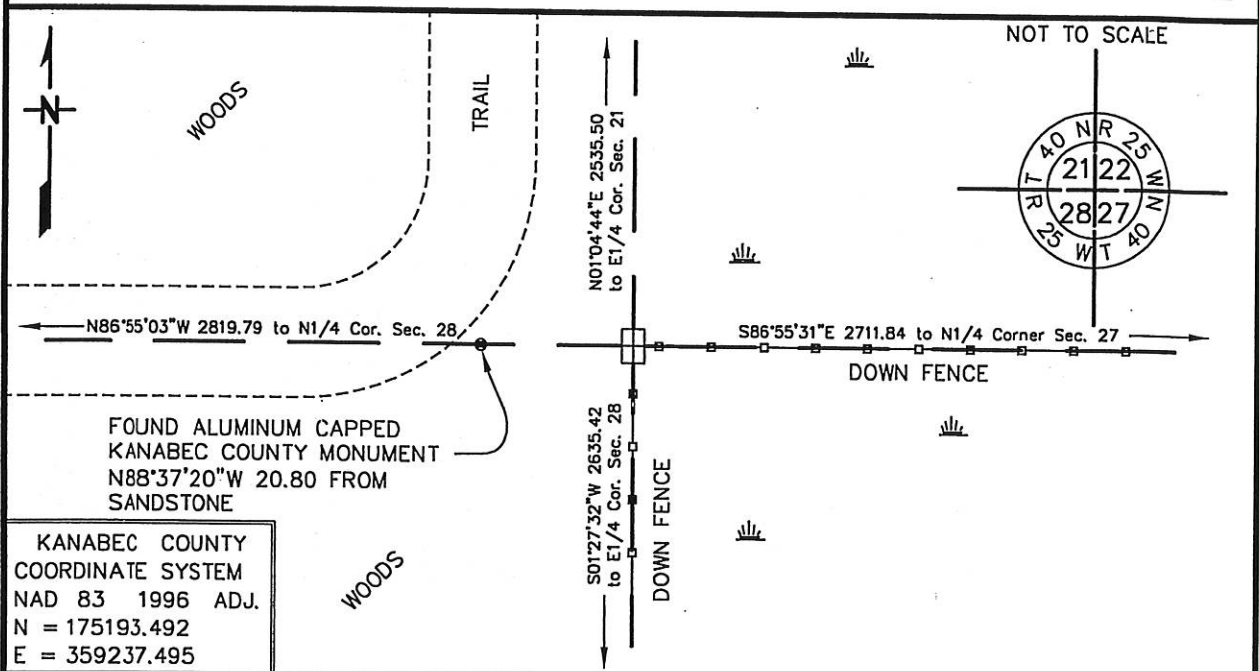
4025085
Index No. _____ R-13

CERTIFICATE OF LOCATION OF GOVERNMENT CORNER

NORTHEAST Corner of Section 28, Township 40, Range 25
4TH Principal Meridian, State of Minnesota, County of KANABEC

At the corner location shown on the sketch:

- On 2/10/2014 found a 9" X 15" SANDSTONE WITH CHISELED "+" DOWN 0.5'
DATE
- A 3/4" REBAR WAS PLACED ON SOUTH SIDE OF STONE
- left monument as found, lowered monument, removed monument (explain)
- On _____ Placed a _____
DATE



I hereby certify that this plan, specification, or report was prepared by me or under my direct supervision and that I am a duly Licensed Land Surveyor under the laws of the State of Minnesota.

SIGNATURE Robert A. Longler

DATE 10/1/15

License Number 47461

STATEMENT OF EVIDENCE**Northeast Corner of Section 28, Township 40 North, Range 25 West, 4th P.M.**

The Department of Natural Resources, Division of Lands and Minerals, contacted the following offices for information regarding this corner:

Kanabec County Recorder
 Kanabec County Surveyor
 Kanabec County Highway Department
 Bogart Peterson and Associates
 Minnesota Historical Society
 Minnesota Department of Transportation

1855

The US General Land Office field notes, on file with the Historical Society, show this corner to be marked with a post and bearing trees.

1909

A road survey was performed along the east line of Section 21 and Section 28 by John Nelson. Mr. Nelson's plat of survey shows a stone at this corner. A measurement of 5070.8 feet is shown for the east line of Section 21 and a measurement of 5192.2 feet shown for the east line of Section 28. *This information was found in Book A-1 on pages 25-27 in the Kanabec County Engineer's office.*

1925

Section Corner Record by Geo. H. Jenks, County Surveyor, indicate a stone marked with a "+" at this corner with a 3" pop. tree 11 feet west. *This information was found on page 106 of Book 1 at the Kanabec County Highway Department.*

1951

The Department of Natural Resources surveyed the south boundary of the Mille Lacs Wildlife Management Area in Kanabec County. A flat sandstone with an "x" was found at this corner and new ties were created. The stone is noted to be 6 inches west of a fence corner of fence lines north-south and east. A measurement of 5649.0 feet is shown to the northwest corner of Section 28. *This information is on file with the Department of Natural Resources Survey Unit.*

2010

County Surveyor, Ernest Rud, searched for evidence of this corner but did not find it. A county monument was set at the P.I. of trails north and west.

2014

In February, the DNR Survey Crew used the 1951 survey information to make a search for the stone. Using a magnetic locator, the survey crew recovered old downed north-south and east-west fence lines. A search location was computed at the intersection of the fence lines. The search location was excavated with a backhoe operated by DNR Wildlife staff and the sandstone monument was recovered 0.5 feet below the surface.

After analysis of the available evidence, the sandstone was accepted to mark the location of the section corner.

For more information on our survey in this area, please contact the MN DNR, Division of Lands and Minerals, Survey Section, 1601 Minnesota Drive, Brainerd, MN 56401