

CERTIFICATE OF LOCATION OF GOVERNMENT CORNER

EAST QUARTER Corner of Section 28, Township 40, Range 25, 4TH P.M.

STATE OF MINNESOTA, County of KANABEC

At the corner location shown on the sketch:
On 11/ /2003 Set a Kanabec County Monument.

Kanabec County U.S. Survey Feet Coordinates
NAD 1983, HARN 1996 Adjustment
Obtained by RTK GPS Observation

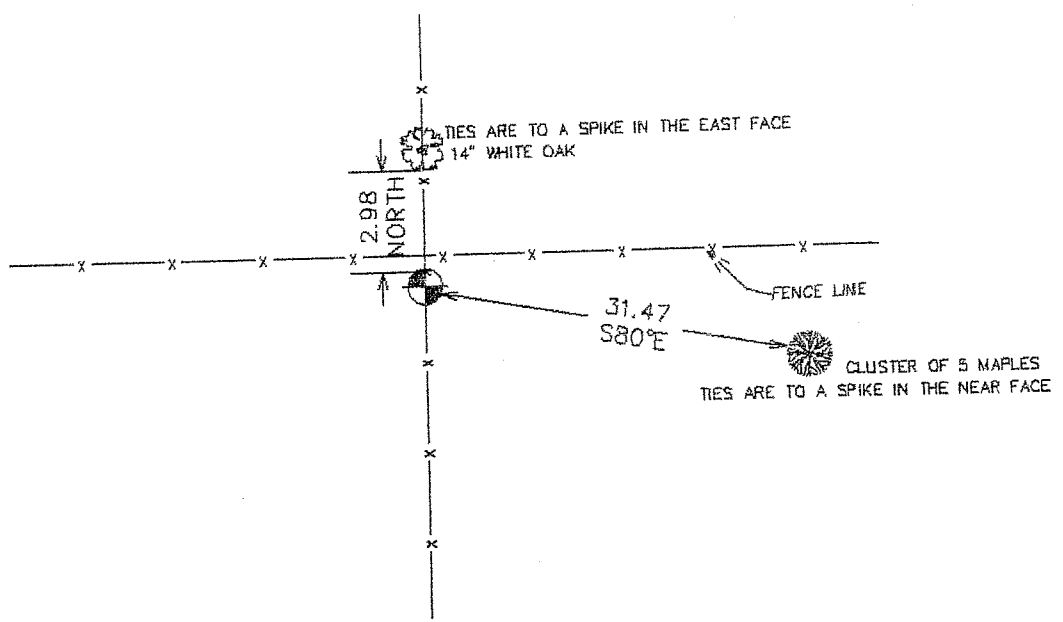
Northing= 172558.93

Easting= 359170.397

Note: NAD 1983, HARN 1996 Adjustment
coordinates are NOT compatible with
NAD 1983 coordinates

Note: 1 Meter=3937/1200 U.S. Survey Feet

SKETCH OF REFERENCE TIES



Statement of evidence relative to this corner location is on back of page.

I hereby certify that this document and the data contained herein was prepared by me or under my direct supervision.

Ernest J. Rud
Signature

1-31-2004
Date

Registration No. 9808

- Land Surveyor, Professional Engineer
 County Surveyor, County Engineer

OFFICE OF THE COUNTY RECORDER

County of _____

I hereby certify that this document was filed in the County Recorder's office at _____ M. on the _____ day of _____ A.D., 20____

County Recorder _____
BY _____ Deputy

DOCUMENT NO. _____

STATEMENT OF EVIDENCE

All of the original governmental bearing trees are now gone.

Original corner was set by Government Surveyor Silas Barnard in November 1855.

This is a road opening on file dated May 1909 and John Nelson did a survey along the East line of Sections 16, 21, and 27 as ordered by the Town Board. Today there is no road in the location, but this falls at the intersection of fence lines going north, south, east, and west. Property owner Clinton Stucky testified that the previous owner showed him the fence corner and had always believed that to be the property corner. We probed within a 2 foot radius of the corner, but could not locate any monument.

We set a Kanabec County monument, took ties, and established Kanabec County coordinates on this corner.