

CERTIFICATE OF LOCATION OF GOVERNMENT CORNER

NORTHEAST Corner of Section 33, Township 40, Range 25, 4TH P.M.
 STATE OF MINNESOTA, County of KANABEC

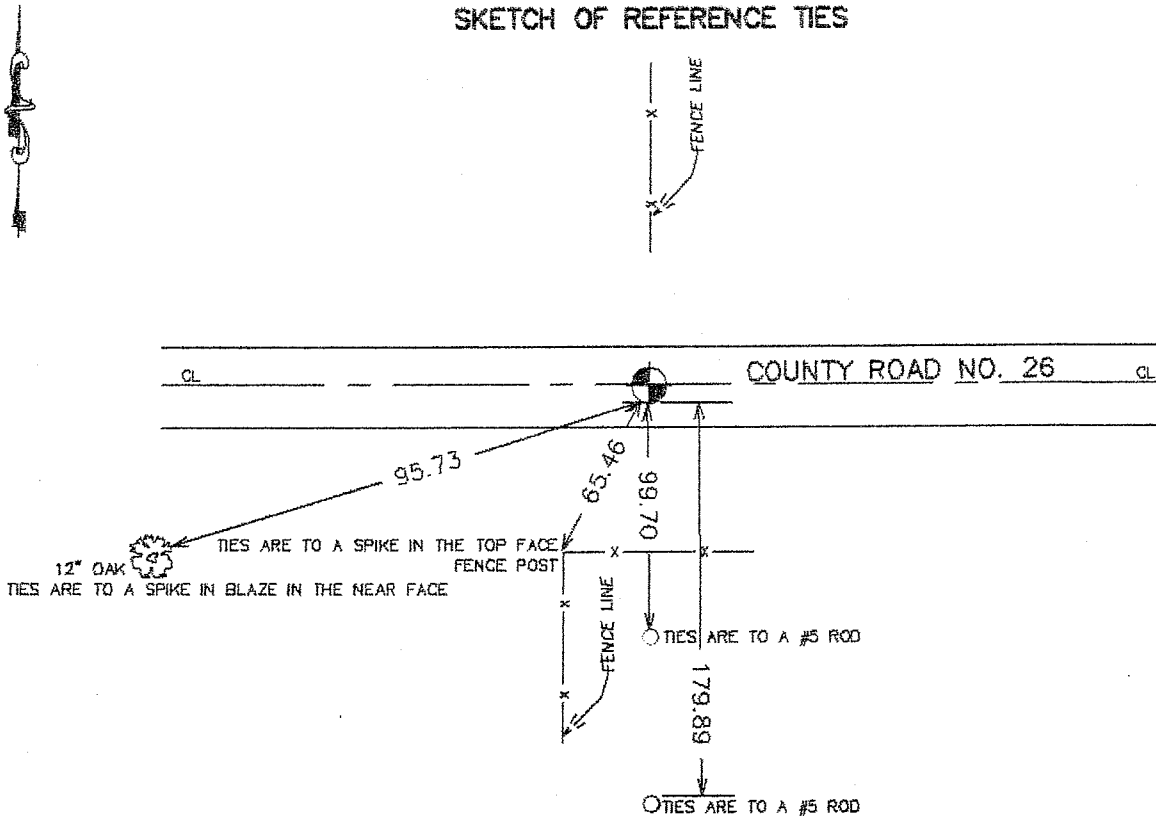
At the corner location shown on the sketch:
 On 1/27/2003 Set a Kanabec County Monument.

Kanabec County U.S. Survey Feet Coordinates
 NAD 1983, HARN 1996 Adjustment
 Obtained by RTK GPS Observation

Northing= 169999.576
 Easting= 359150.265

Note: NAD 1983, HARN 1996 Adjustment
 coordinates are NOT compatible with
 NAD 1983 coordinates
 Note: 1 Meter=39.37/1200 U.S. Survey Feet

SKETCH OF REFERENCE TIES



Statement of evidence relative to this corner location is on back of page.

I hereby certify that this document and the data contained herein was prepared by me or under my direct supervision.

Ernst J. Rud
 Signature

1-31-2004
 Date

Registration No. 9808

- Land Surveyor, Professional Engineer
 County Surveyor, County Engineer

OFFICE OF THE COUNTY RECORDER

County of _____

I hereby certify that this document was filed in the County Recorder's office at _____ M. on the _____ day of _____ A.D., 20____

County Recorder _____

BY _____ Deputy

DOCUMENT NO. _____

STATEMENT OF EVIDENCE

(from tie sheet no. 967)

All of the original governmental bearing trees are now gone.

In 1905, J.B. Vickory made a survey along the north line of Sections 31-34, Township 40, Range 25, for a four rod road, per the Town Road Order on record at the County Auditor's Office.

In 1909, J. Nelson, made a survey starting at the northeast corner of Section 33, Township 40, Range 25, thence running north on the section lines for three miles for a 4 rod road, per supervisor's Road Order on file at the County Auditor's Office.

In July of 1993, we made a survey along the north line of Sections 31- 34, Township 40, Range 25, to locate existing monuments, lines of occupation

On May 19, 1998, we made a 5.5 foot by 12 foot by 14 foot excavations with a backhoe. No evidence of the corner was found in the excavation.

There are two fence lines at this corner. The fence line running north is an old fence and has been maintained at the same location since 1971, per the Land Owner Byron Lindman. The fence line running south is a newer fence and appears to be running southeasterly and not on the section line.

In October of 2003 at the request of the Kanabec County Highway Department we reset this corner from construction ties and established Kanabec County coordinates on this monument.