

# CERTIFICATE OF LOCATION OF GOVERNMENT CORNER

EAST 1/4 Corner of Section 33, Township 40, Range 25, 4TH P.M.

STATE OF MINNESOTA, County of KANABEC

KANABEC COUNTY CAST ALUMINUM MONUMENT AND REBAR

Kanabec County U.S. Survey Feet Coordinates  
 NAD 1983, HARN 1996 Adjustment  
 Obtained by RTK GPS Observation

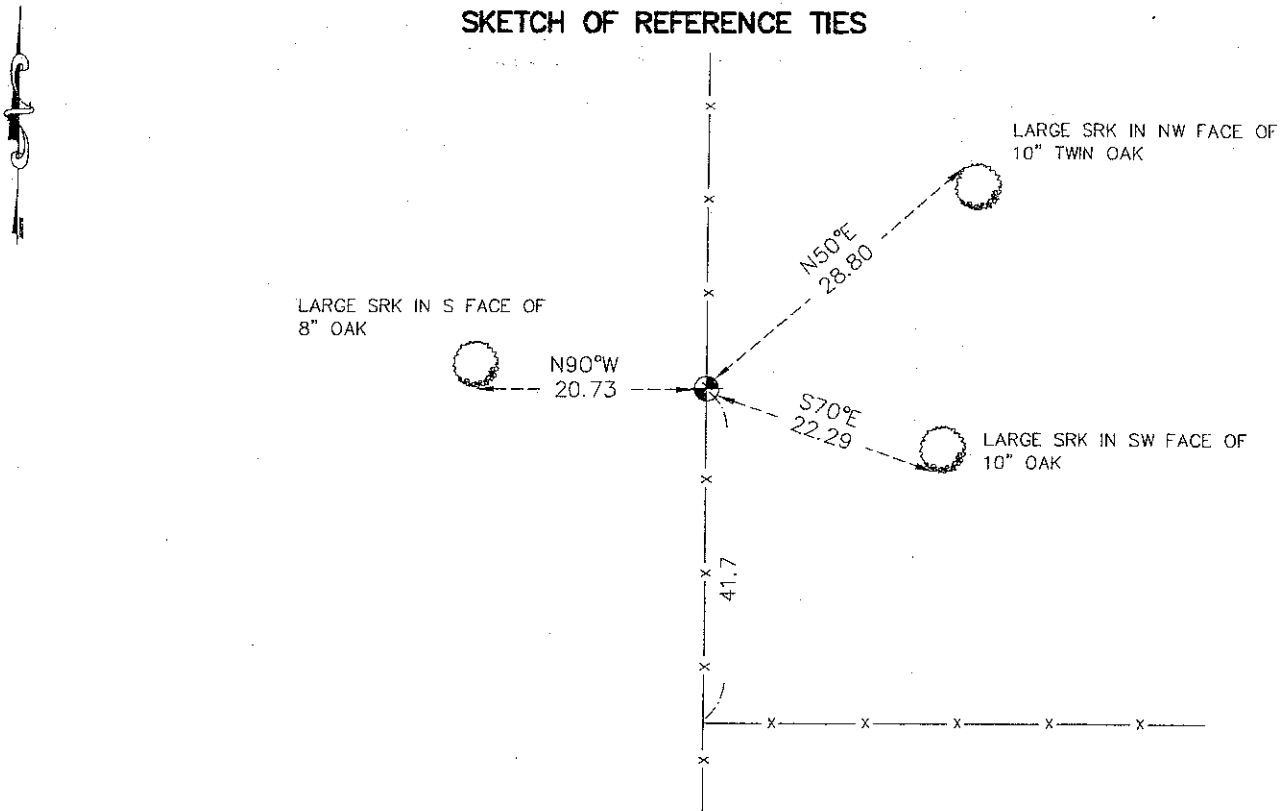
Northing= 167402.640

Easting= 359063.640

Note: NAD 1983, HARN 1996 Adjustment coordinates are NOT compatible with NAD 1983 coordinates

Note: 1 Meter=3937/1200 U.S. Survey Feet

## SKETCH OF REFERENCE TIES



Statement of evidence relative to this corner location is on back of page.

I hereby certify that this document and the data contained herein was prepared by me or under my direct supervision.

*Ernest Blud*  
 Signature

11-04-2008  
 Date

Registration No. 9808

Land Surveyor,  Professional Engineer

County Surveyor,  County Engineer

### OFFICE OF THE COUNTY RECORDER

County of \_\_\_\_\_

I hereby certify that this document was filed in the County Recorder's office at \_\_\_\_\_ M. on the \_\_\_\_\_ day of \_\_\_\_\_ A.D., 20\_\_\_\_

County Recorder \_\_\_\_\_

BY \_\_\_\_\_ Deputy

DOCUMENT NO. \_\_\_\_\_

E 1/4 CORNER SECTION 33, TOWNSHIP 40, RANGE 25

**STATEMENT OF EVIDENCE**

THE ORIGINAL CORNER POST WAS SET ON NOV. 1, 1855 BY DEPUTY SURVEYOR SILAS BARNARD. TWO BEARING TREES WERE ESTABLISHED. NO VISIBLE EVIDENCE FOR THE CORNER OR BEARING TREES REMAIN TODAY.

A SUBSEQUENT SURVEY DATED DEC. 20, 1898 OF THE NW 1/4 OF SEC. 33 IS FILED IN BOOK A OF SURVEYS PAGE 180. THE ONLY CORNER IDENTIFIED IS THE NW CORNER OF SEC. 33. THE SURVEYOR WENT 40 CHAINS ON EACH SIDE OF NW 1/4. NO OTHER INFORMATION IS AVAILABLE ON SURVEY.

ON NOV. 4, 2008 E.G. RUD AND SONS DID A SURVEY IN THE NW 1/4 OF THE NE 1/4 OF SEC. 33. THERE IS AN OLD NORTH-SOUTH FENCE AT THIS LOCATION AND A FENCE RUNNING EAST. THE FENCE CORNER FALLS 42 FEET SOUTH OF AN EQUAL DISTANCE TO NE AND SE CORNERS.

THE ORIGINAL GLO NOTES INDICATE A CREEK RUNNING SE AT 9.5 CHAINS NORTH OF THE E 1/4 CORNER. A #7 REBAR WITH AN ALUMINUM CAP WAS SET EQUAL DISTANCE BETWEEN NE AND SE CORNERS OF SEC. 33 AND ON THE NORTH-SOUTH FENCE LINE. THE DISTANCE TO CREEK MEASURED 10.5 CHAINS AND TO HOLD TO FENCE RUNNING EAST WOULD HAVE MADE THIS CHAINAGE GREATER. KANABEC COUNTY COORDINATES WERE ESTABLISHED ON THIS MONUMENT AND TIES TAKEN TO THE CORNER.