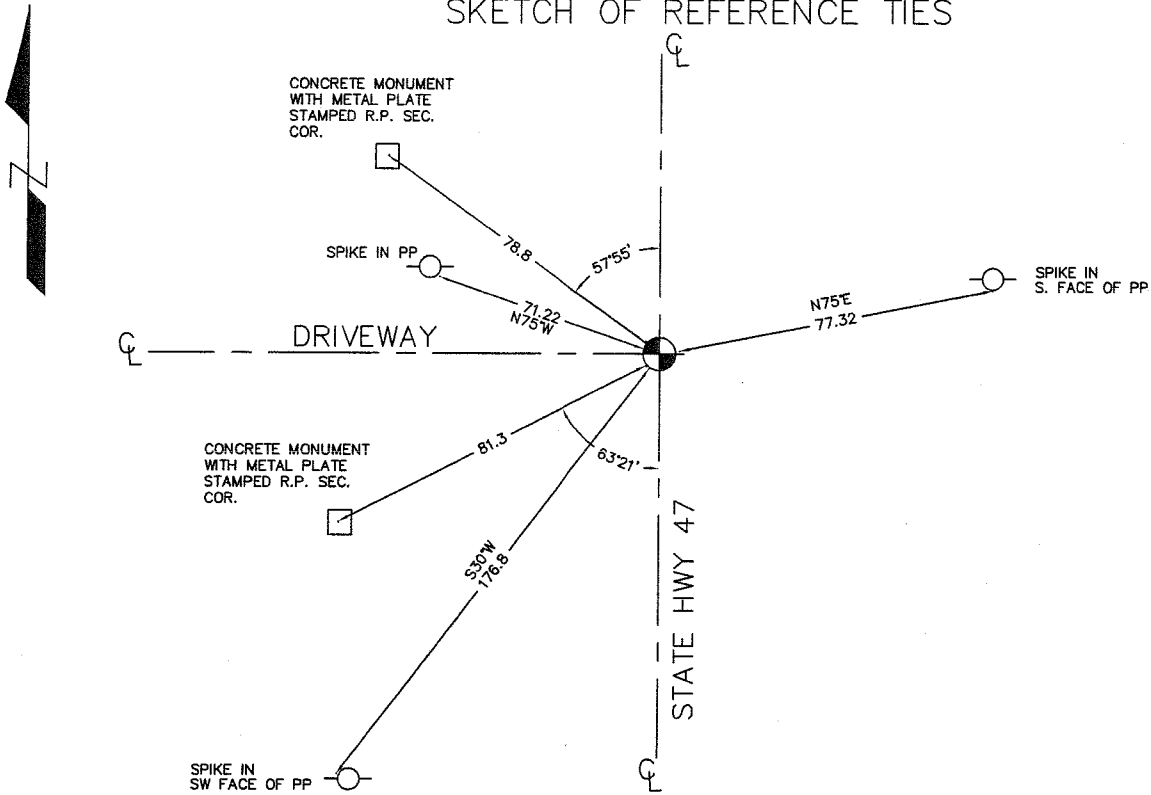


CERTIFICATE OF LOCATION OF GOVERNMENT CORNER

NORTHEAST CORNER OF SECTION 10, TOWNSHIP 40, RANGE 25, 4TH PM.
STATE OF MINNESOTA, COUNTY OF KANABEC

<p>AT THE CORNER LOCATION SHOWN ON THE SKETCH:</p> <p>ON 12/ /03 FOUND KANABEC COUNTY MONUMENT (1/2" x 7" IRON PIPE OVER MONUMENT)</p>	<p>KANABEC COUNTY U.S. SURVEY FEET COORDINATES NAD 1983, HARN 1996 ADJUSTMENT OBTAINED BY RTK GPS OBSERVATION</p> <p>NORTHING= <u>190460.28</u></p> <p>EASTING= <u>364994.17</u></p> <p>NOTE: NAD 1983, HARN 1996 ADJUSTMENT COORDINATES ARE NOT COMPATIBLE WITH NAD 1983 COORDINATES</p> <p>NOTE: 1 METER= $\frac{3937}{200}$ U.S. SURVEY FEET</p>
--	--

SKETCH OF REFERENCE TIES



STATEMENT OF EVIDENCE RELATIVE TO THIS CORNER LOCATION IS ON THE BACK OF THIS PAGE

I HEREBY CERTIFY THAT THIS DOCUMENT AND THE DATA CONTAINED HEREIN WAS PREPARED BY ME OR UNDER MY DIRECT SUPERVISION.

Ernest Blud 11-18-2005
SIGNATURE DATE

REGISTRATION NO. Miss No 9808

- LAND SURVEYOR COUNTY SURVEYOR
 PROF. ENGINEER COUNTY ENGINEER

OFFICE OF THE COUNTY RECORDER

COUNTY OF _____

I HEREBY CERTIFY THAT THIS DOCUMENT WAS FILED IN THE COUNTY RECORDER'S OFFICE AT _____ M. ON THE _____ DAY OF _____, 2____.

COUNTY RECORDER _____

BY _____, DEPUTY

DOCUMENT NO. _____

STATEMENT OF EVIDENCE

From Tie Sheet 573:

The Minnesota Department of Transportation found an iron pipe in the centerline of roads north-south and west in their survey for Highway No. 47 before construction of Highway No. 47. They set a concrete monument to replace the iron pipe after construction.

On April 13, 1981, I (M.B. Rude) found a spike on the surface and a concrete monument 8" below the surface. I set a $\frac{1}{2}$ " by 7" iron pipe on the top of the concrete monument.

In December of 2003, E.G. Rud & Sons located this monument and established Kanabec County coordinates on this position using GPS equipment.