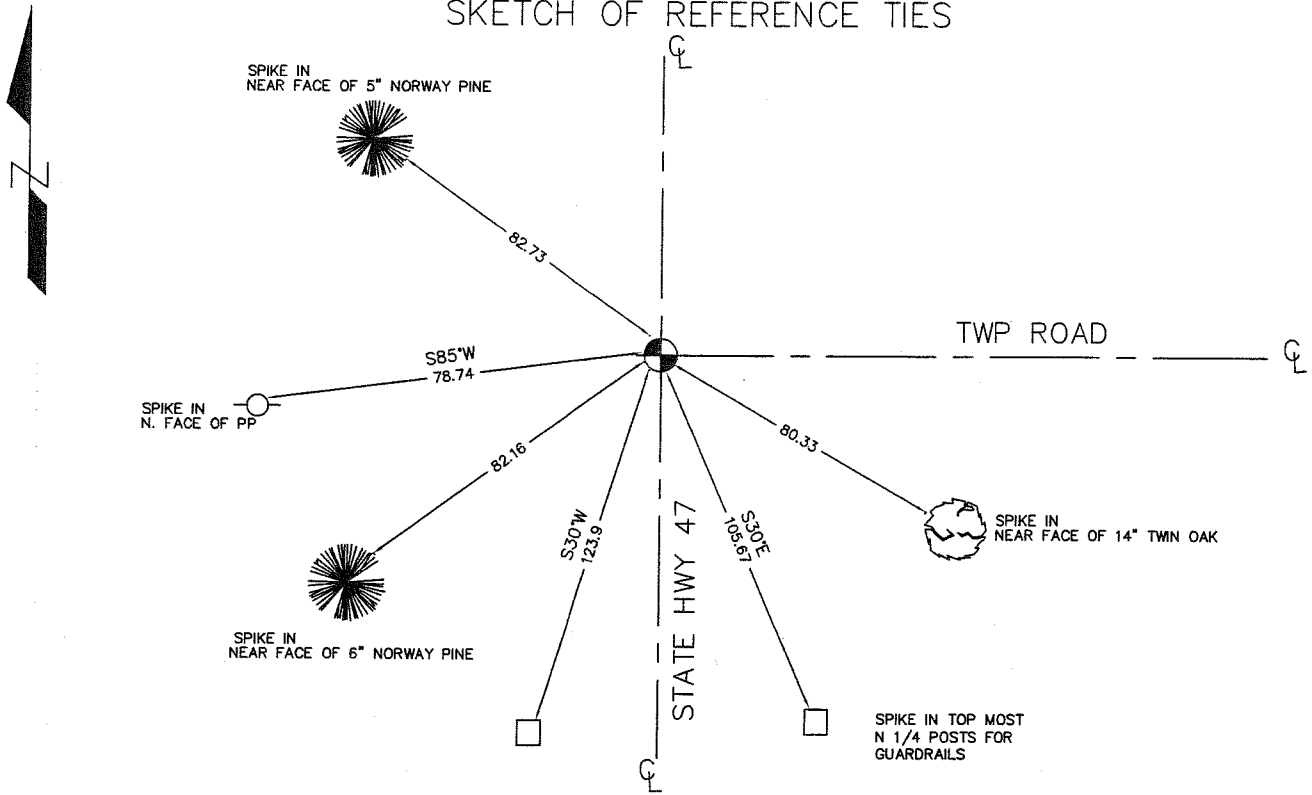


CERTIFICATE OF LOCATION OF GOVERNMENT CORNER

EAST QUARTER CORNER OF SECTION 10, TOWNSHIP 40, RANGE 25, 4TH PM.
 STATE OF MINNESOTA, COUNTY OF KANABEC

<p>AT THE CORNER LOCATION SHOWN ON THE SKETCH:</p> <p>ON 12/ /03 FOUND KANABEC COUNTY CAST IRON MONUMENT</p>	<p>KANABEC COUNTY U.S. SURVEY FEET COORDINATES NAD 1983, HARN 1996 ADJUSTMENT OBTAINED BY RTK GPS OBSERVATION</p> <p>NORTHING= <u>187845.23</u></p> <p>EASTING= <u>364994.32</u></p> <p>NOTE: NAD 1983, HARN 1996 ADJUSTMENT COORDINATES ARE NOT COMPATIBLE WITH NAD 1983 COORDINATES</p> <p>NOTE: 1 METER= $\frac{3937}{1200}$ U.S. SURVEY FEET</p>
---	--

SKETCH OF REFERENCE TIES



STATEMENT OF EVIDENCE RELATIVE TO THIS CORNER LOCATION IS ON THE BACK OF THIS PAGE

I HEREBY CERTIFY THAT THIS DOCUMENT AND THE DATA CONTAINED HEREIN WAS PREPARED BY ME OR UNDER MY DIRECT SUPERVISION.

Ernest Alund 11-18-2005
 SIGNATURE DATE

REGISTRATION NO. Minn No 98008

- LAND SURVEYOR COUNTY SURVEYOR
 PROF. ENGINEER COUNTY ENGINEER

OFFICE OF THE COUNTY RECORDER

COUNTY OF _____

I HEREBY CERTIFY THAT THIS DOCUMENT WAS FILED IN THE COUNTY RECORDER'S OFFICE AT _____ M. ON THE _____ DAY OF _____, 2____.

COUNTY RECORDER _____

BY _____, DEPUTY

DOCUMENT NO. _____

STATEMENT OF EVIDENCE

From Tie Sheet 574:

The Minnesota Department of Transportation's records show this corner at the intersection of roads north, south and east, but no monument in place.

There is a township road order on file at the County Recorder's Office, dated 1917, which states that a township road was laid out starting at the Government Stake at the quarter line between Sections 11 and 12, Township 40, Range 25 and running west on the quarter line through the center of Section 11 for a distance of one mile and terminating at the government stake at the quarter line between Sections 10 and 11, Township 40, Range 25.

I set this corner in the centerline of the intersection of State Highway No. 47 north-south and centerline of township road east.

This is in harmony with the township road order from 1917 and the Minnesota Department of Transportation's Records.

In December of 2003, E.G. Rud & Sons located this monument and established Kanabec County coordinates on this position using GPS equipment.