

# CERTIFICATE OF LOCATION OF GOVERNMENT CORNER

East Quarter Corner of Section 15, Township 40 North, Range 25 West,  
4th Principal Meridian, Kanabec County, State of Minnesota

At the corner location shown on the sketch:  
On 5/11/2023 set a large Mag Spike in the centerline of  
State Highway No. 47.

Kanabec County U.S. Survey Feet Coordinates  
NAD 1983, HARN 1996 Adjustment  
Obtained by RTK GPS observation  
Northing: 182605.1923  
Easting: 364900.1733

Note: NAD 1983, HARN 1996 Adjustment  
coordinates are NOT compatible with  
NAD 1983 coordinates  
Note: 1 Meter = 3937/1200 U.S. Survey Feet

## SKETCH OF REFERENCE TIES

DISTANCE UNITS FOR THIS DRAWING IS  
U.S. SURVEY FEET

NOT TO SCALE

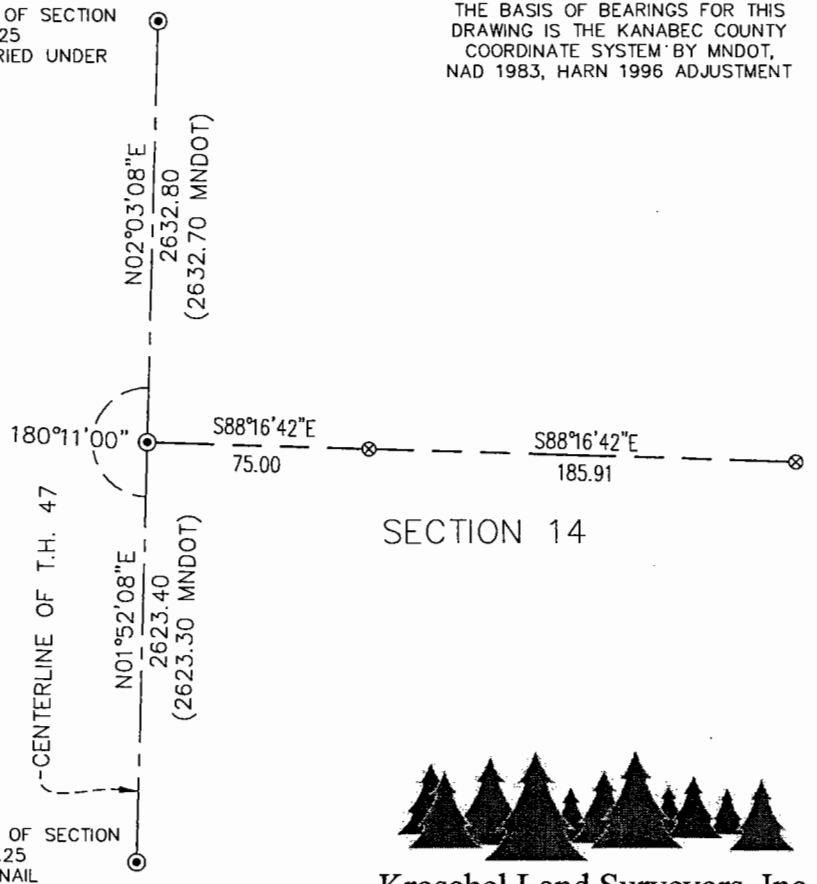
NE CORNER OF SECTION  
15, T.40, R.25  
CORNER BURIED UNDER  
PAVEMENT

THE BASIS OF BEARINGS FOR THIS  
DRAWING IS THE KANABEC COUNTY  
COORDINATE SYSTEM BY MNDOT,  
NAD 1983, HARN 1996 ADJUSTMENT



⊗ - DENOTES SET 1/2" x 14"  
IRON REBAR MARKED  
KROSCHER 44490

SECTION 15



SECTION 14



**Kroschel Land Surveyors, Inc.**

1639 Main Street North, Suite 6, Pine City, MN 55063  
Phone: 320-629-3267 Fax: 320-629-0176

Statement of evidence relative to this corner location is on back of page.

I hereby certify that this report was prepared by me  
or under my direct supervision, that the United  
States public land survey monument record is  
correct and complete to the best of my knowledge  
and belief, and that I am a duly Licensed Land  
Surveyor under the laws of the State of Minnesota.

### OFFICE OF THE COUNTY RECORDER

County of Kanabec

I hereby certify that this document was filed in the  
County Recorder's office at \_\_\_\_\_ .M. on the  
\_\_\_\_\_ day of \_\_\_\_\_ A.D., 20\_\_\_\_

Tyler J. Kroschel, County Surveyor

1-16-2024  
Date

County Recorder \_\_\_\_\_, Deputy

License No. 44490

DOCUMENT NO. \_\_\_\_\_

Statement of Evidence:

In November of 1855, Deputy Surveyor Silas Barnard set a post to mark the East Quarter Corner of Section 15, Township 40 North, Range 25 West, 4th Principal Meridian.

Reference ties were taken to:

- 18 inch Pine at North 72 degrees West a distance of 5 links
- 8 inch Yellow Birch at East a distance of 22 links

1909— County Surveyor John Nelson made a survey along the east line of Sections 3, 10, and 15, filed in Book A1 of Surveys, Page 34–35 at the County Highway Department. Nelson found the Southeast and Northeast corners of Section 15 and set a stake halfway between for the East Quarter corner of Section 15. He measured 5173.74 feet along the east line of Section 15.

1966±— MNDOT Right of Way map for Trunk Highway 47 shows an 8" x 8" x 8" Field Stone in place at the intersection of the centerline of the highway and a fence line east. The highway plan gives a distance of 2623.30 feet to the SE corner of Section 15, a distance of 2632.70 feet to the NE corner of Section 15, and a deflection angle of 0 degrees 11 minutes to the right.

In May 2023, I made a survey around Section 14, Township 40 North, Range 25 West, 4th Principal Meridian for Ron Stratton to locate existing monuments, lines of occupation and establish search areas.

This corner falls in the center of State Highway No. 47. On May 11, 2023 I made a search with a metal locator at the corner location, but nothing was found. MNDOT's dimensions along the east line of Section 15 fit within 0.20 feet. I set a large Mag Spike in the centerline of the State Highway using obliterated methods. I proportioned MNDOT's dimensions along the east line of Section 15, as shown. This location fit the centerline of the State Highway and an old fence line to the east. Assigned Kanabec County Coordinates.