

# CERTIFICATE OF LOCATION OF GOVERNMENT CORNER

North Quarter Corner of Section 23, Township 40 North, Range 25 West,  
4th Principal Meridian, Kanabec County, State of Minnesota

At the corner location shown on the sketch:  
On 10/22/2020 found a 1/2" Iron Pipe monument with plastic cap marked RLS 9808. Left said monument as found.

Kanabec County U.S. Survey Feet Coordinates  
NAD 1983, HARN 1996 Adjustment  
Obtained by RTK GPS observation  
Northing: 179895.5888  
Easting: 367512.7214

Note: NAD 1983, HARN 1996 Adjustment coordinates are NOT compatible with NAD 1983 coordinates

Note: 1 Meter = 3937/1200 U.S. Survey Feet

## SKETCH OF REFERENCE TIES

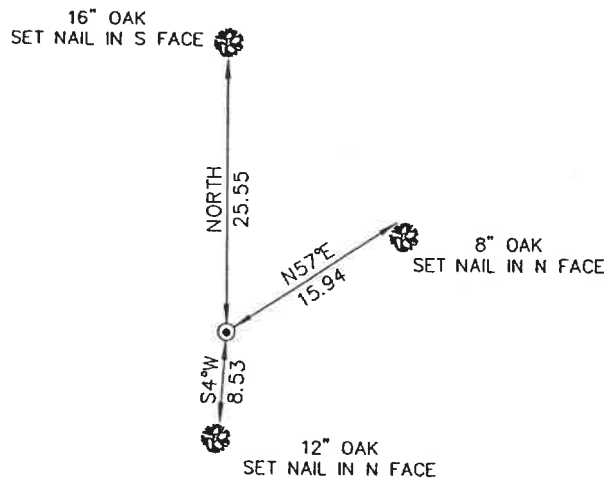
DISTANCE UNITS FOR THIS DRAWING IS U.S. SURVEY FEET

NOT TO SCALE

THE BASIS OF BEARINGS FOR THIS DRAWING IS THE KANABEC COUNTY COORDINATE SYSTEM BY MNDOT, NAD 1983, HARN 1996 ADJUSTMENT



### SECTION 14



### SECTION 23



**Kroschel Land Surveyors, Inc.**

1639 Main Street North, Suite 6, Pine City, MN 55063  
Phone: 320-629-3267 Fax: 320-629-0176

Statement of evidence relative to this corner location is on back of page.

I hereby certify that this report was prepared by me or under my direct supervision, that the United States public land survey monument record is correct and complete to the best of my knowledge and belief, and that I am a duly Licensed Land Surveyor under the laws of the State of Minnesota.

Tyler J. Kroschel, County Surveyor

2-28-2022  
Date

License No. 44490

## OFFICE OF THE COUNTY RECORDER

County of Kanabec

I hereby certify that this document was filed in the County Recorder's office at \_\_\_\_\_ .M. on the \_\_\_\_\_ day of \_\_\_\_\_ A.D., 20\_\_\_\_  
County Recorder \_\_\_\_\_

\_\_\_\_\_, Deputy  
DOCUMENT NO. \_\_\_\_\_

Statement of Evidence:

In October of 1855, Deputy Surveyor Silas Barnard set a post to mark the North Quarter Corner of Section 23, Township 40 North, Range 25 West, 4th Principal Meridian.

Reference ties were taken to:

10 inch White Oak at North 78 degrees West a distance of 15 links

8 inch Red Oak at North 60 degrees East a distance of 12 links

All of the original Government corner evidence was searched for. None was found.

1911— County Surveyor John Nelson made a survey of the north lines of Sections 22 and 23 filed in Book A1 of Surveys, Pages 98–99. Nelson measured 81.46 chains along the north line of Section 23 and set a stake at the N 1/4 corner of Section 23 halfway in between the NE and NW corners of Section 23.

In October 2020, I made a survey in the Northeast Quarter of Section 23, Township 40 North, Range 25 West, 4th Principal Meridian for Glenn Steeves to locate existing monuments, lines of occupation and establish search areas.

On 10/22/2020 a search was made with a magnetic locator at a lost position. I found a 1/2" Iron Pipe monument with plastic cap marked RLS 9808. The Iron Pipe fit a lost position between the NE and NW corners of Section 23 very well. I left said Iron Pipe as found. There are no lines of occupation in this area.

Established reference ties and assigned Kanabec County Coordinates. This location was determined to be the best available evidence of the original corner location.

I measure 2699.51 feet to the NW corner of Section 23 and 2699.51 feet to the NE corner of Section 23.



**Kroschel Land Surveyors, Inc.**

1639 Main Street North, Suite 6, Pine City, MN 55063  
Phone: 320-629-3267 Fax: 320-629-0176