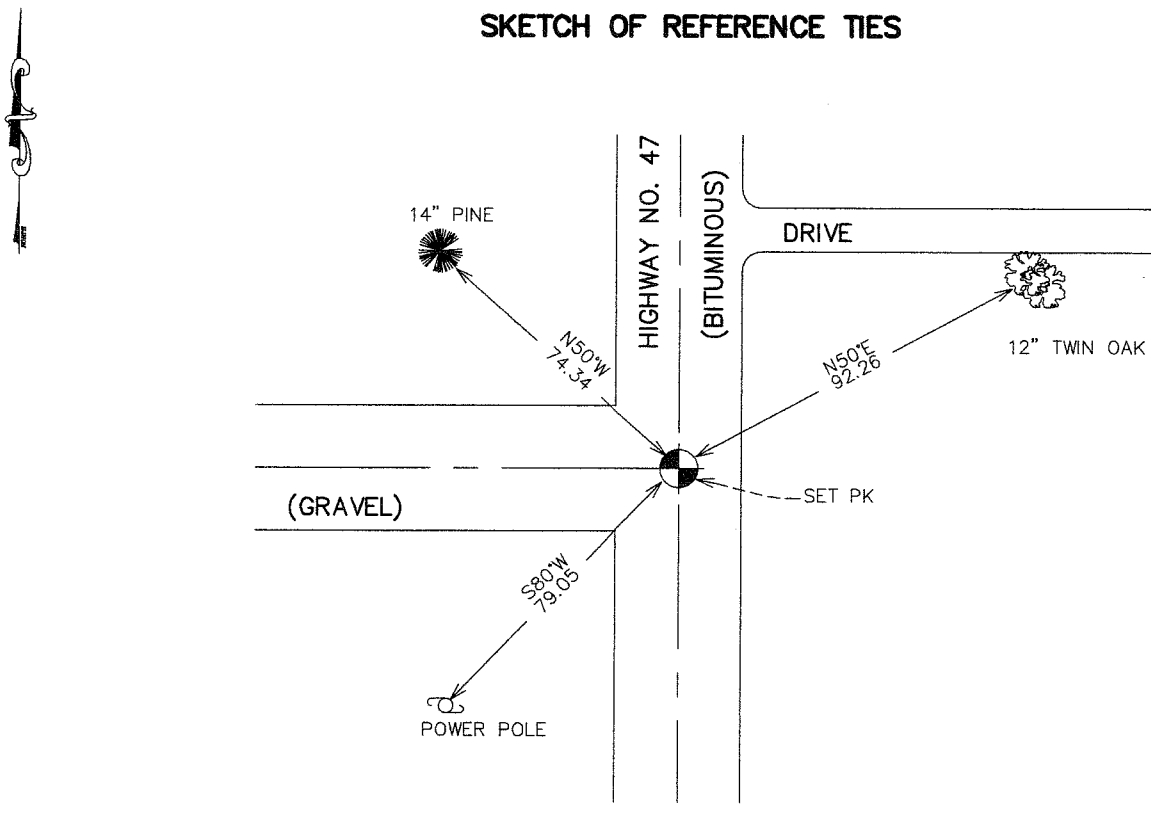


CERTIFICATE OF LOCATION OF GOVERNMENT CORNER

NORTHEAST Corner of Section 22, Township 40, Range 25, 4TH P.M.
 STATE OF MINNESOTA, County of KANABEC

At the corner location shown on the sketch: FOUND THIS MONUMENT AND ESTABLISHED G.P.S. COORDINATES ON ITS LOCATION.	Kanabec County U.S. Survey Feet Coordinates NAD 1983, HARN 1996 Adjustment Obtained by RTK GPS Observation Northing= <u>179983.191</u> Easting= <u>364814.616</u> Note: NAD 1983, HARN 1996 Adjustment coordinates are NOT compatible with NAD 1983 coordinates Note: 1 Meter=3937/1200 U.S. Survey Feet
---	--

SKETCH OF REFERENCE TIES



Statement of evidence relative to this corner location is on back of page.

I hereby certify that this document and the data contained herein was prepared by me or under my direct supervision. <div style="display: flex; justify-content: space-between;"> <div style="text-align: center;"> _____ Signature </div> <div style="text-align: center;"> <u>3-19-2007</u> _____ Date </div> </div> Registration No. <u>Minn No 9808</u> <input checked="" type="checkbox"/> Land Surveyor, <input type="checkbox"/> Professional Engineer <input type="checkbox"/> County Surveyor, <input type="checkbox"/> County Engineer	<h3 style="text-align: center;">OFFICE OF THE COUNTY RECORDER</h3> County of _____ I hereby certify that this document was filed in the County Recorder's office at _____ M. on the _____ day of _____ A.D., 20____ County Recorder _____ BY _____ Deputy DOCUMENT NO. _____
--	---

NORTHEAST CORNER SECTION 22, T40, R25

STATEMENT OF EVIDENCE

THE ORIGINAL CORNER WAS SET BY DEPUTY SURVEYOR SILAS BARNARD IN OCTOBER 31ST, 1855 AND 4 BEARING TREES ESTABLISHED. NO VISIBLE EVIDENCE TO THE CORNER OR BEARING TREES REMAIN. THIS CORNER FALLS ON THE CENTERLINE OF STATE HIGHWAY NO. 47 AND A GRAVEL ROAD RUNNING WEST.

ON JULY 9TH 1909 JOHN NELSON RAN A ROAD SURVEY FROM THIS CORNER TO THE NORTHEAST CORNER OF SECTION 3. HE STATED A SANDSTONE WAS SET FOR THIS CORNER. ON THE RIGHT OF WAY MAP OF MINNESOTA HIGHWAY DEPARTMENT FOR TRUNK HIGHWAY NO. 47 A ~~FUEL~~ *field* STONE IS SHOWN ON THE CENTERLINE OF 47 AND A ROAD RUNNING WEST.

IN MAY 2003 E.G. RUD FOUND A PIPE AT THIS CORNER AND ESTABLISHED KANABEC COUNTY COORDINATES ON THIS LOCATION.

PRIOR TO THE BITUMINOUS OVERLAY ON TRUNK HIGHWAY 47 IN 2006 MINNESOTA HIGHWAY DEPARTMENT CREWS ALSO ESTABLISHED KANABEC COUNTY COORDINATES ON THE POSITION THEY HAD. THESE COORDINATES AGREED WITHIN 0.02 OF A FOOT FROM E.G. RUDS. IN FEBRUARY 2007, A P.K. WAS SET IN THE OVERLAY AND NEW TIES TAKEN.