

# CERTIFICATE OF LOCATION OF GOVERNMENT CORNER

NORTH QUARTER Corner of Section 26, Township 40, Range 25, 4TH P.M.

STATE OF MINNESOTA, County of KANABEC

At the corner location shown on the sketch:

FOUND THIS MONUMENT  
AND ESTABLISHED KANABEC COUNTY COORDINATES ON ITS LOCATION.

Kanabec County U.S. Survey Feet Coordinates  
NAD 1983, HARN 1996 Adjustment  
Obtained by RTK GPS Observation

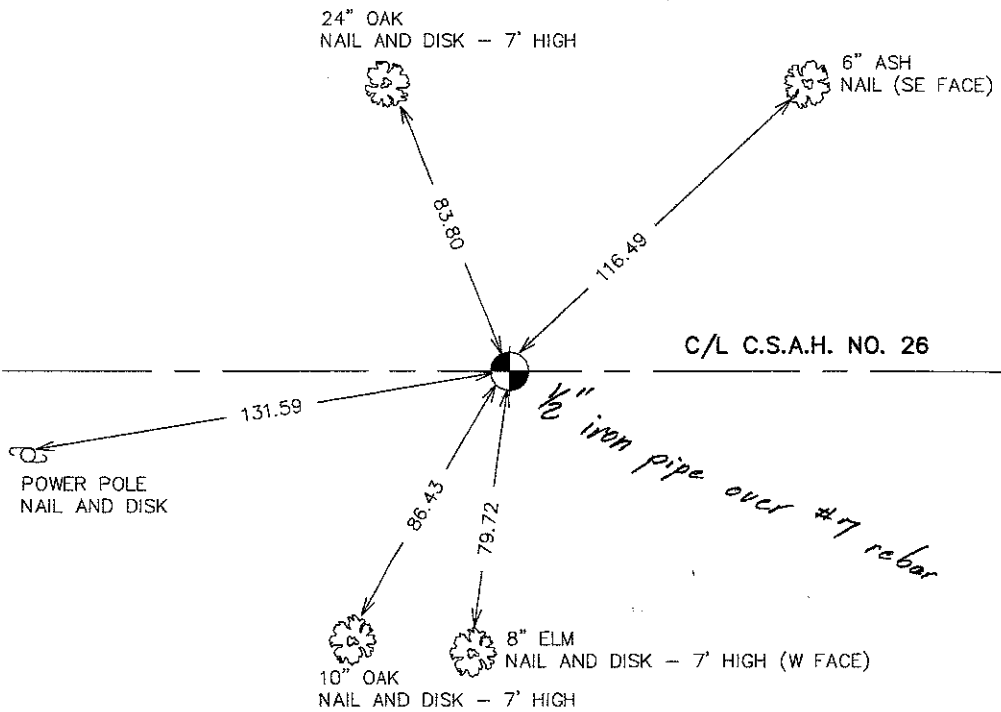
Northing= 174665.20

Easting= 367419.21

Note: NAD 1983, HARN 1996 Adjustment  
coordinates are NOT compatible with  
NAD 1983 coordinates

Note: 1 Meter=3937/1200 U.S. Survey Feet

### SKETCH OF REFERENCE TIES



Statement of evidence relative to this corner location is on back of page.

I hereby certify that this document and the data contained herein was prepared by me or under my direct supervision.

Ernest Rud 8-20-2007  
Signature Date

Registration No. Minn No 9808

Land Surveyor,  Professional Engineer

County Surveyor,  County Engineer

### OFFICE OF THE COUNTY RECORDER

County of \_\_\_\_\_

I hereby certify that this document was filed in the County Recorder's office at \_\_\_\_\_ M. on the \_\_\_\_\_ day of \_\_\_\_\_ A.D., 20\_\_\_\_

County Recorder \_\_\_\_\_

BY \_\_\_\_\_ Deputy

DOCUMENT NO. \_\_\_\_\_

NORTH QUARTER CORNER SECTION 26, T40, R25

**STATEMENT OF EVIDENCE**

ALL OF THE ORIGINAL BEARING TREES ARE NOW GONE.

THERE IS A SURVEY FOR A ROAD ON FILE IN BOOK 2 OF SURVEY RECORDS PAGE 311 FOR A ROAD ALONG THE NORTH LINE OF SECTION 26.

IN JULY, 1982, M.B. RUDE RAN A SURVEY FROM THE NORTHEAST CORNER TO THE NORTHWEST CORNER OF SECTION 26 AND FOUND A FENCE LINE SOUTH AT THE QUARTER CORNER. THIS FENCE LINE FITS A SPLIT OF THE NORTH LINE OF SECTION 26 AND THE CENTERLINE OF THE EXISTING EAST-WEST ROAD IS ABOUT 5 FEET SOUTH OF A STRAIGHT LINE.

IN AUGUST, 1982, M.B. RUDE MADE AN EXCAVATION WITH THE COUNTY BACKHOE 15 FEET SQUARE, 2 FEET DEEP, 1 FOOT INTO THE NATURAL GROUND. NO EVIDENCE WAS FOUND IN THE EXCAVATION.

M.B. RUDE ACCEPTED THE CENTER OF THE EAST-WEST ROAD PER THE ROAD SURVEY RECORDS AND A SPLIT OF THE NORTH LINE OF SECTION 26 AS THE BEST AVAILABLE EVIDENCE OF THE ORIGINAL CORNER LOCATION. THIS LOCATION FITS THE FENCE LINE SOUTH. A 4" BY 17" CAST IRON MONUMENT WAS SET AT THIS CORNER.

KANABEC COUNTY HIGHWAY DEPARTMENT LOCATED THE QUARTER CORNER PRIOR TO CONSTRUCTION AND PLACED ADDITIONAL REFERENCES OUTSIDE OF THE NEW CONSTRUCTION LIMITS.

THE ROADWAY WAS REGRADED IN 1994. BEFORE IT WAS PAVED IN 1995, THE CORNER WAS RE-ESTABLISHED ACCORDING TO REFERENCES OBTAINED PREVIOUSLY AND PLACED ADDITIONAL REFERENCES.

IN 2003 E.G. RUD AND SONS ESTABLISHED KANABEC COUNTY COORDINATES ON THIS MONUMENT USING G.P.S. EQUIPMENT.