

CERTIFICATE OF LOCATION OF GOVERNMENT CORNER

NORTHEAST Corner of Section 27, Township 40, Range 25, 4TH P.M.

STATE OF MINNESOTA, County of KANABEC

At the corner location shown on the sketch:
FOUND THIS MONUMENT
AND ESTABLISHED G.P.S. COORDINATES ON ITS LOCATION.

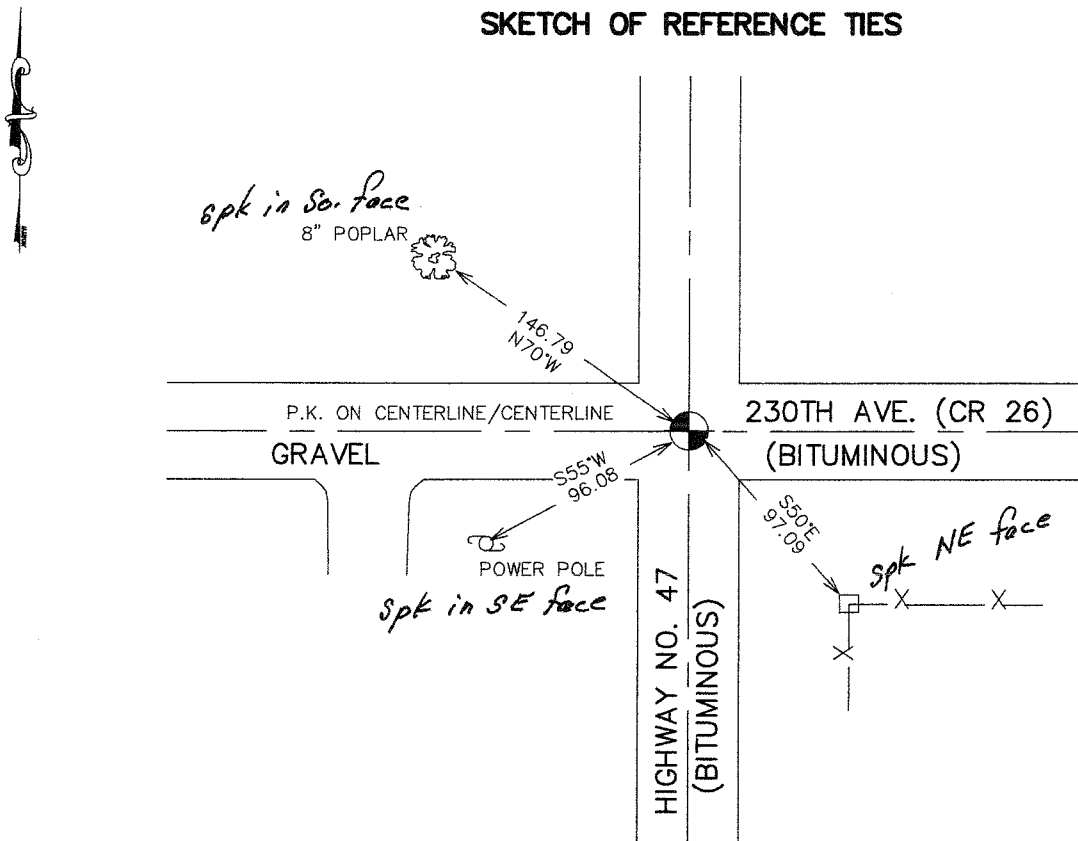
Kanabec County U.S. Survey Feet Coordinates
NAD 1983, HARN 1996 Adjustment
Obtained by RTK GPS Observation

Northing= ~~169806.270~~ 174861.10
Easting= ~~364459.20~~ 364652.83

Note: NAD 1983, HARN 1996 Adjustment
coordinates are NOT compatible with
NAD 1983 coordinates

Note: 1 Meter=3937/1200 U.S. Survey Feet

SKETCH OF REFERENCE TIES



Statement of evidence relative to this corner location is on back of page.

I hereby certify that this document and the data contained herein was prepared by me or under my direct supervision.

Ernest J. Reed 3-24-2007
Signature Date

Registration No. Minn No 9808

- Land Surveyor, Professional Engineer
- County Surveyor, County Engineer

OFFICE OF THE COUNTY RECORDER

County of _____

I hereby certify that this document was filed in the County Recorder's office at _____ M. on the _____ day of _____ A.D., 20 _____

County Recorder _____

BY _____ Deputy

DOCUMENT NO. _____

NORTHEAST CORNER SECTION 27, T40, R25

STATEMENT OF EVIDENCE

ALL OF THE ORIGINAL BEARING TREES ARE NOW GONE.

IN 1923, GEORGE JENKS, COUNTY SURVEYOR, FOUND THE GOVERNMENT POST AND REPLACED IT WITH A IRON PIN.

MINNESOTA DEPARTMENT OF TRANSPORTATION FOUND A 1 1/2" IRON PIPE IN PLACE IN THEIR SURVEY FOR STATE HIGHWAY NO. 47 AND SET A CONCRETE MONUMENT AT THIS LOCATION AFTER HIGHWAY 47 WAS BUILT.

IN AUGUST, 1982, M.B. RUDE FOUND THE MINNESOTA DEPARTMENT OF TRANSPORTATION'S CONCRETE MONUMENT 18" BELOW THE SURFACE AND SET A 4" BY 17" CAST IRON MONUMENT ON TOP OF THE CONCRETE MONUMENT.

IN MAY 2003 E.G. RUD AND SONS FOUND THIS C.I.M. AND ESTABLISHED KANABEC COUNTY COORDINATES USING G.P.S. EQUIPMENT.

IN 2006 A BITUMINOUS OVERLAY WAS DONE ON 47. BEFORE THE OVERLAY MINNESOTA HIGHWAY DEPARTMENT SURVEY CREWS LOCATED THIS MONUMENT BASED ON KANABEC COUNTY COORDINATES. THIS AGREED WITH E.G. RUD AND SONS VALUE WITHIN 0.03'.

IN FEBRUARY 7, 2007 E.G. RUD AND SONS SET A P.K. AT THIS POSITION AND TOOK NEW TIES.