

CERTIFICATE OF LOCATION OF GOVERNMENT CORNER

EAST QUARTER Corner of Section 34, Township 40, Range 25, 4TH P.M.

STATE OF MINNESOTA, County of KANABEC

At the corner location shown on the sketch:

FOUND THIS MONUMENT
AND ESTABLISHED G.P.S. COORDINATES ON ITS LOCATION.

Kanabec County U.S. Survey Feet Coordinates
NAD 1983, HARN 1996 Adjustment
Obtained by RTK GPS Observation

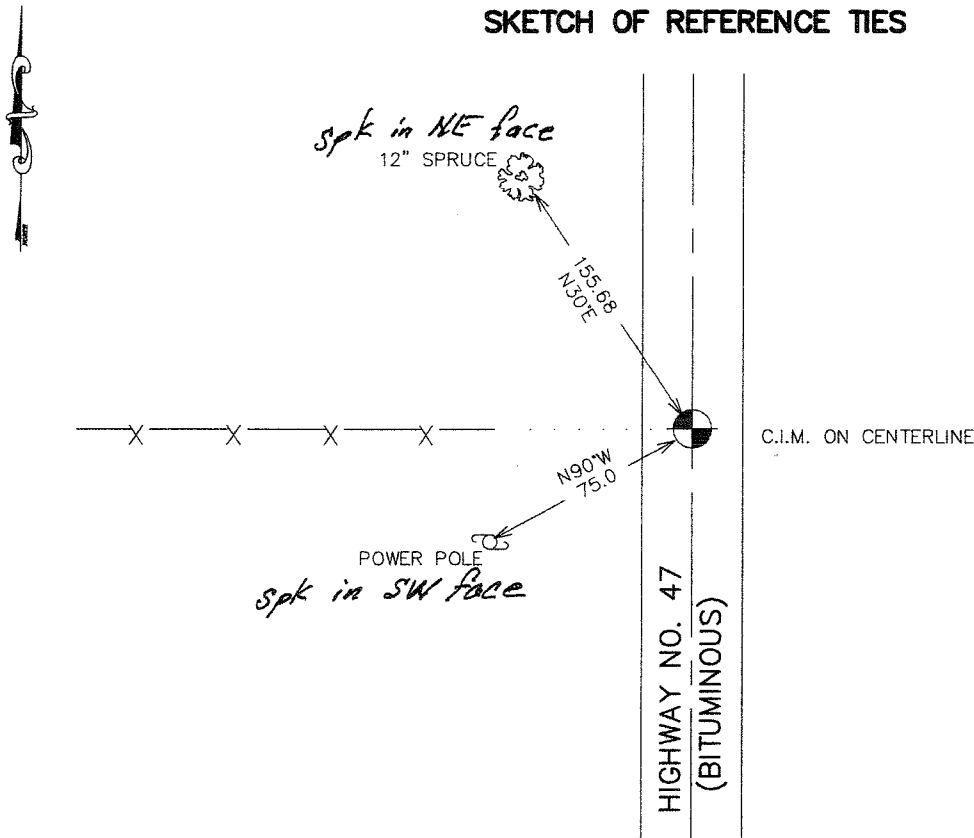
Northing= 167068.02

Easting= 364350.09

Note: NAD 1983, HARN 1996 Adjustment
coordinates are NOT compatible with
NAD 1983 coordinates

Note: 1 Meter=3937/1200 U.S. Survey Feet

SKETCH OF REFERENCE TIES



Statement of evidence relative to this corner location is on back of page.

I hereby certify that this document and the data contained herein was prepared by me or under my direct supervision.

Ernest J. Reed 3-24-2007
Signature Date

Registration No. Minn No 9808

Land Surveyor, Professional Engineer

County Surveyor, County Engineer

OFFICE OF THE COUNTY RECORDER

County of _____

I hereby certify that this document was filed in the County Recorder's office at _____ M. on the _____ day of _____ A.D., 20____

County Recorder _____

BY _____ Deputy

DOCUMENT NO. _____

EAST QUARTER CORNER SECTION 34, T40, R25

STATEMENT OF EVIDENCE

THE ORIGINAL CORNER WAS SET BY DEPUTY SURVEYOR SILAS BARNARD ON OCTOBER 29, 1855 AND TWO BEARING TREES ESTABLISHED. ANY VISIBLE EVIDENCE FOR THE CORNER OR BEARING TREES NO LONGER REMAIN.

THIS CORNER FALLS ON THE CENTERLINE OF TRUNK HIGHWAY NO. 47 BUT NO ROAD OPENINGS COULD BE FOUND AT THE COUNTY AUDITORS OFFICE.

IN JUNE OF 1970 NORM HOIUM FOUND A MONUMENT SET IN CONCRETE 1 FOOT DOWN. NORM SET A CAST IRON MONUMENT AND TOOK TIES.

IN FEBRUARY 2007, E.G. RUD AND SONS FOUND THIS C.I.M., TOOK TIES, AND ESTABLISHED KANABEC COUNTY COORDINATES USING G.P.S. EQUIPMENT.