

# CERTIFICATE OF LOCATION OF GOVERNMENT CORNER

NE Corner of Section 11, Township 40, Range 25, 4<sup>TH</sup> P.M.

STATE OF MINNESOTA, County of KANABEC

At the corner location shown on the sketch:

*Found C.I.M. in E of gravel road down 0.2'*

Kanabec County U.S. Survey Feet Coordinates  
NAD 1983, HARN 1996 Adjustment  
Obtained by RTK GPS Observation

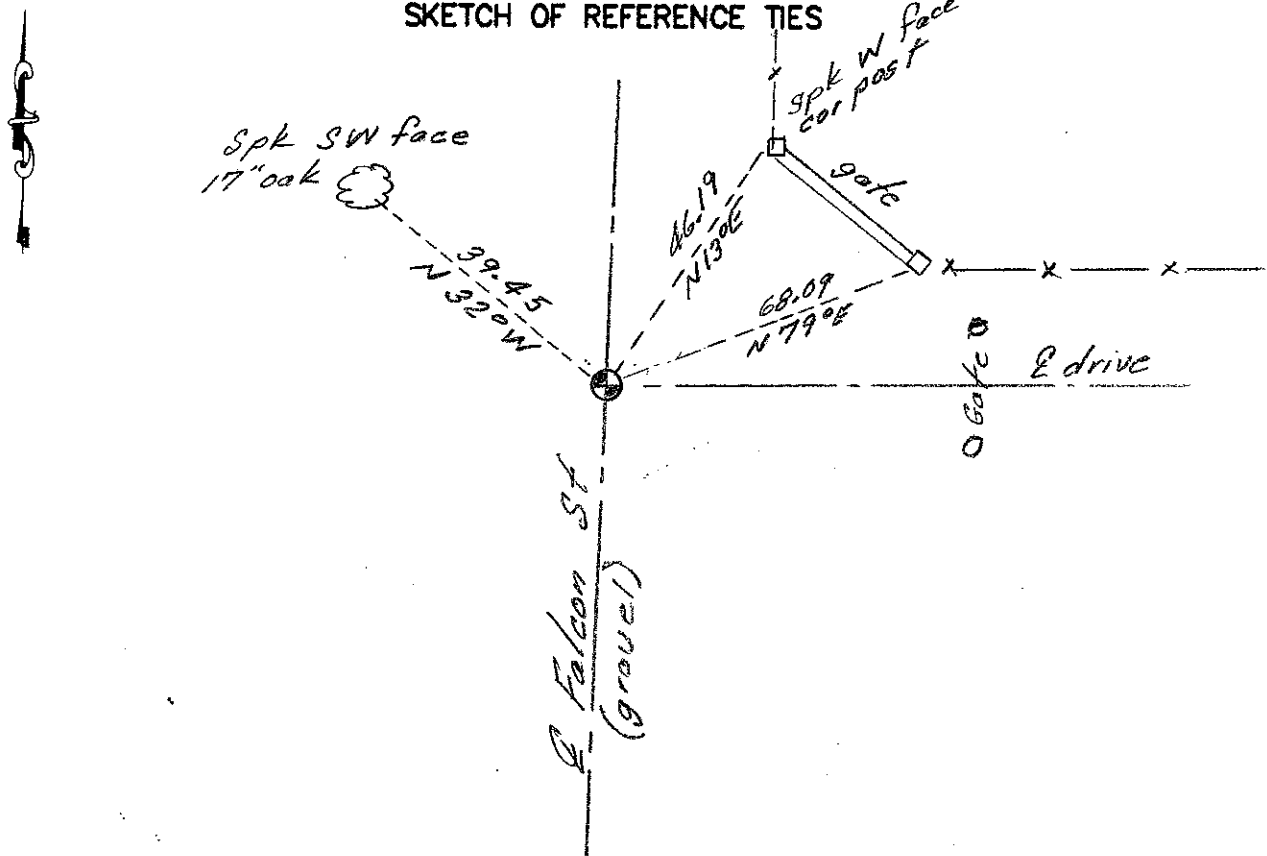
Northing= 190345.81

Easting= 370308.55

Note: NAD 1983, HARN 1996 Adjustment coordinates are NOT compatible with NAD 1983 coordinates

Note: 1 Meter=3937/1200 U.S. Survey Feet

### SKETCH OF REFERENCE TIES



Statement of evidence relative to this corner location is on back of page.

I hereby certify that this document and the data contained herein was prepared by me or under my direct supervision.

Ernest J. Reed  
Signature

11-27-12  
Date

Registration No. 9808

Land Surveyor,  Professional Engineer

County Surveyor,  County Engineer

### OFFICE OF THE COUNTY RECORDER

County of \_\_\_\_\_

I hereby certify that this document was filed in the County Recorder's office at \_\_\_\_\_ M. on the \_\_\_\_\_ day of \_\_\_\_\_ A.D., 20 \_\_\_\_\_

County Recorder \_\_\_\_\_

BY \_\_\_\_\_ Deputy

DOCUMENT NO. \_\_\_\_\_

STATEMENT OF EVIDENCE: NORTHEAST CORNER 11-40-25  
From tie sheet 595

4025062

All of the original bearing trees are now gone.

There is a township road on file at the County Auditor's Office dated 1913, and surveyed by T.B. Vickery a surveyor, for a township road starting at the southeast corner of Section 14, thence north 80 chains to the northeast corner of Section 14, thence north 80 chains to the northeast corner of Section 11.

There is an existing road bed north and south and road bed east and a blazed line west.

On April 18, 1981, M.B. Rude made an excavation with a backhoe at this location. The excavation was 15 feet square and 2.5 feet deep, 1.5 feet below the natural ground. No evidence was found in the excavation

M.B. Rude set this corner in the centerline road of intersection as this is in harmony with the existing accepted lines of occupation and the old town road order.

On April 18, 2012, E.G. Rud & Sons found a C.I.M. at this location. New ties were taken and Kanabec County coordinates established on this position.