

CERTIFICATE OF LOCATION OF GOVERNMENT CORNER

East Quarter Corner of Section 11, Township 40 North, Range 25 West,
4th Principal Meridian, Kanabec County, State of Minnesota

At the corner location shown on the sketch:
On 5/29/2013 Found a broken Cast Iron Monument that had been moved.
On 5/29/2013 set a 7/8" x 20" Rebar Monument with Aluminum Cap per ties and M.B. Rude's section information.

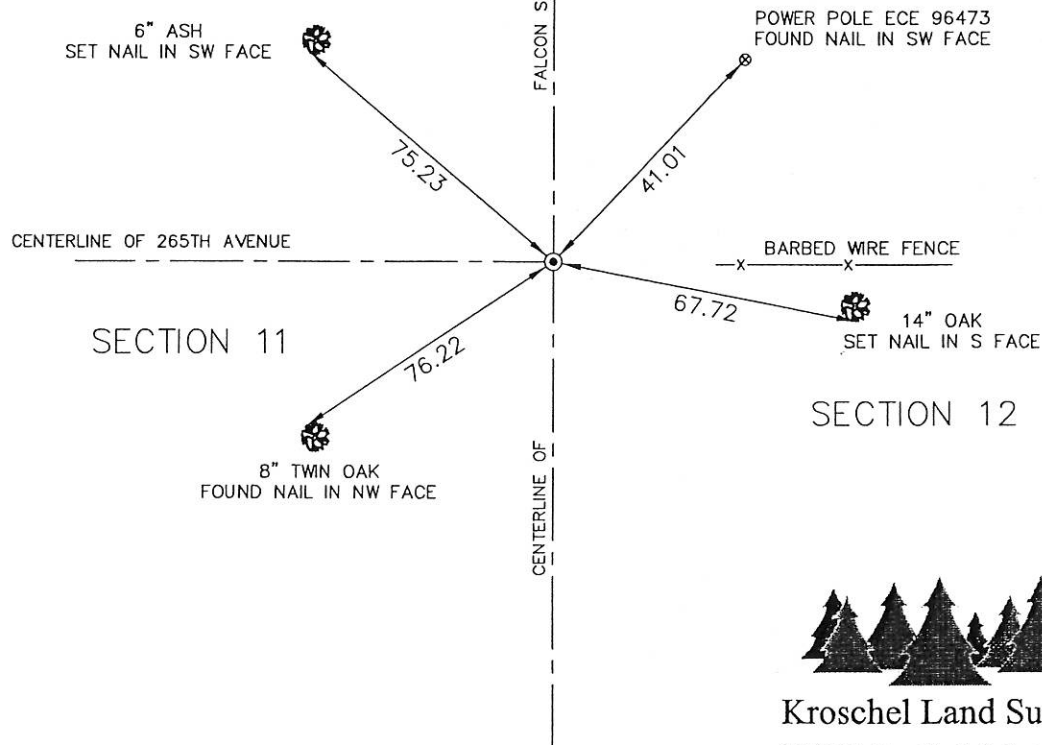
Kanabec County U.S. Survey Feet Coordinates
NAD 1983, HARN 1996 Adjustment
Obtained by RTK GPS observation
Northing: 187720.2335
Easting: 370266.7341
Note: NAD 1983, HARN 1996 Adjustment coordinates are NOT compatible with NAD 1983 coordinates
Note: 1 Meter = 3937/1200 U.S. Survey Feet

SKETCH OF REFERENCE TIES

KROSCHEL LAND SURVEYORS, INC.
ASSUMES NO LIABILITY FOR THE ACCURACY
OF THE GPS COORDINATES SHOWN HEREON.
ALL COORDINATES AND DIMENSIONS
SHOULD BE FIELD VERIFIED BY THE USER.

NOT TO SCALE

THE BASIS OF BEARINGS FOR THIS
DRAWING IS THE KANABEC COUNTY
COORDINATE SYSTEM BY MNDOT,
NAD 1983, HARN 1996 ADJUSTMENT



Kroschel Land Surveyors, Inc.

1639 Main Street North, Suite 6, Pine City, MN 55063
Phone: 320-629-3267 Fax: 320-629-0176

Statement of evidence relative to this corner location is on back of page.

I hereby certify that this survey, plan, or report was prepared by me or under my direct supervision, that the United States public land survey monument record is correct and complete to the best of my knowledge and belief, and that I am a duly Licensed Land Surveyor under the laws of the State of Minnesota.

Tyler J. Kroschel
License No. 44490
 Land Surveyor County Surveyor
Date 1-14-2014

OFFICE OF THE COUNTY RECORDER

County of Kanabec

I hereby certify that this document was filed in the County Recorder's office at _____ .M. on the _____ day of _____ A.D., 20____
County Recorder _____
By _____, Deputy
DOCUMENT NO. _____

Statement of Evidence:

In October of 1855, Deputy Surveyor Silas Barnard set a post to mark the East Quarter Corner of Section 11, Township 40 North, Range 25 West, 4th Principal Meridian.

In May 1981, County Surveyor M.B. Rude filed a corner certificate in the Office of the County Recorder. His statement of evidence reads as follows:

All of the original bearing trees are now gone.

There is a township road order on file at the County Auditor's Office for a north-south road on the east line of Section 11, surveyed by T.B. Vickery, dated 1913, and an east-west road starting at the Government Stake at the east quarter corner dated 1917.

On April 13, 1981 we made an excavation with a backhoe at this location. The excavation was 20 feet square and 3 feet deep, one foot into the natural ground. No evidence was found in the excavation.

I set this corner at the intersection of the north-south road and road west and fence line east as this is in harmony with the township road order and accepted lines of occupation.

2012-County Surveyor Ernie Rud, RLS 9808 found a broken off cast iron monument and filed a corner certificate. His statement of evidence reads as follows:

On April 18, 2012, E.G. Rud & Sons found a broken cast iron monument down 0.5 feet that fit the computed position from M.B. Rude's worksheet. New ties were taken and Kanabec County coordinates established on this position.

On 5/29/2013 I found a broken Cast Iron Monument that had been moved. I removed the Cast Iron Monument and set a 7/8" x 20" Rebar monument with Aluminum Cap from ties and M.B. Rude's Section breakdown information for Sections 11 and 12. Ernie Rud's location does not fit M.B. Rude's ties nor his worksheet.

Established additional reference ties and assigned Kanabec County Coordinates.

This location was determined to be the best available evidence of the original corner monument location.



Kroschel Land Surveyors, Inc.

1639 Main Street North, Suite 6, Pine City, MN 55063
Phone: 320-629-3267 Fax: 320-629-0176