

# CERTIFICATE OF LOCATION OF GOVERNMENT CORNER

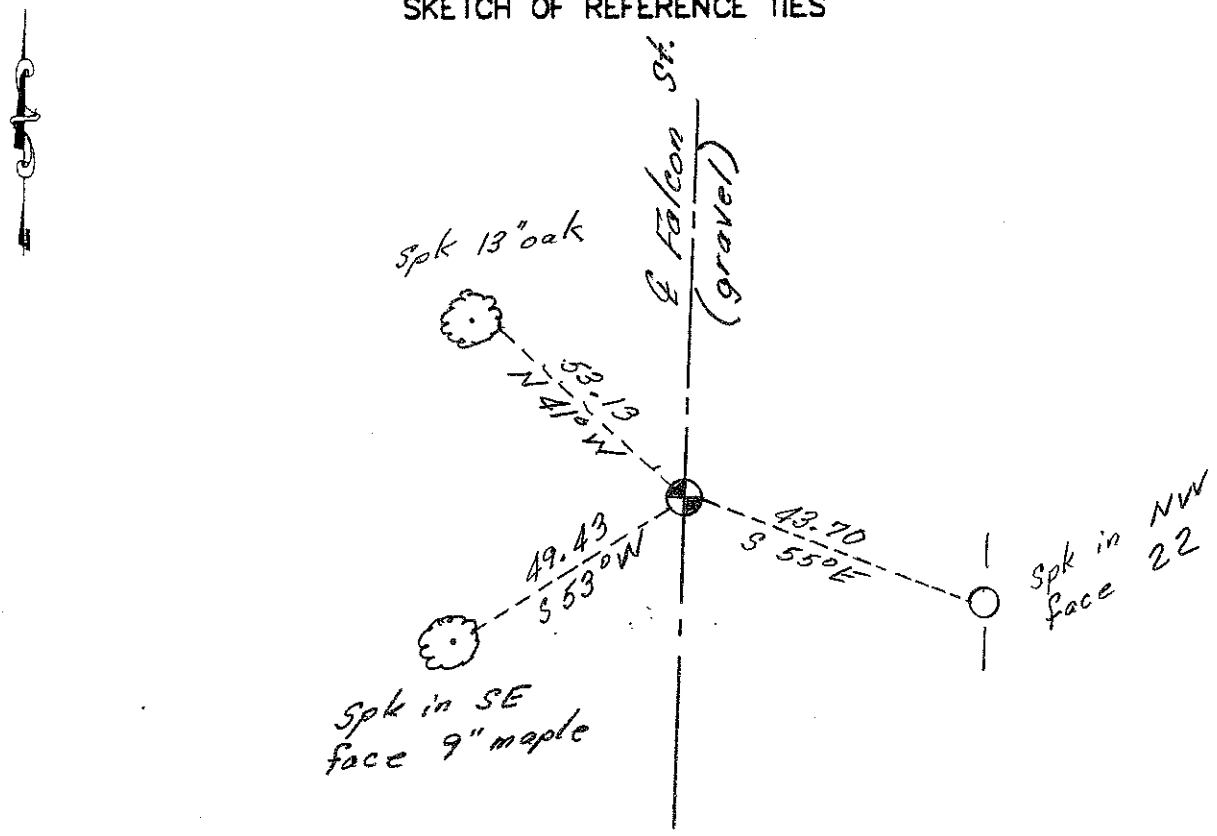
NE Corner of Section 14, Township 40, Range 25, 4<sup>th</sup> P.M.

STATE OF MINNESOTA, County of KANABEC

At the corner location shown on the sketch:  
*On 4-18-12 we found a C.I.M. down  
13' in E of gravel road.*

Kanabec County U.S. Survey Feet Coordinates  
NAD 1983, HARN 1996 Adjustment  
Obtained by RTK GPS Observation  
Northing= 185081.03  
Easting= 370258.48  
Note: NAD 1983, HARN 1996 Adjustment  
coordinates are NOT compatible with  
NAD 1983 coordinates  
Note: 1 Meter=3937/1200 U.S. Survey Feet

### SKETCH OF REFERENCE TIES



Statement of evidence relative to this corner location is on back of page.

I hereby certify that this document and the data contained herein was prepared by me or under my direct supervision.

Ernest L. Rud 11-27-12  
Signature Date

Registration No. Minn No. 9808

- Land Surveyor,      [ ] Professional Engineer
- [ ] County Surveyor,    [ ] County Engineer

### OFFICE OF THE COUNTY RECORDER

County of \_\_\_\_\_

I hereby certify that this document was filed in the County Recorder's office at \_\_\_\_\_ M. on the \_\_\_\_\_ day of \_\_\_\_\_ A.D., 20\_\_\_\_

County Recorder \_\_\_\_\_

BY \_\_\_\_\_ Deputy

DOCUMENT NO. \_\_\_\_\_

STATEMENT OF EVIDENCE: NORTHEAST CORNER 14-40-25  
From corner certificate #598

4025059

All of the original bearing trees are now gone.

There is a township road order on file at the County Auditor's Office for a town road surveyed by T.B. Vickery, dated 1913, along the east line of Section 14 and Section 11.

On April 13, 1981, M.B. Rude ran a survey from the northeast corner of Section 11 to the southeast corner of Section 23 to locate the lines of occupation and existing monuments.

This corner was set by proportional measurement from the southeast corner of Section 14 (which was set by extension of lines of occupation in Sections 23 and 24 and a survey by John Nelson, dated 1904) and the east quarter corner of Section 11.

There is an old road bed to the east 31 feet south of this corner, however, M.B. Rude checked on aerial photo of this area and it is very visible that this road does not follow the section line.

On April 18, 2012, E.G. Rud & Sons found a cast iron monument at this location down 1.3 feet. New ties taken and Kanabec County coordinates established on this position.