

# CERTIFICATE OF LOCATION OF GOVERNMENT CORNER

E 1/4 Corner of Section 14, Township 40, Range 25, 4<sup>th</sup> P.M.

STATE OF MINNESOTA, County of KANABEC

At the corner location shown on the sketch:

*found C.I.M. down 2' & tipped over. Set # 7 rebar with aluminum cap.*

Kanabec County U.S. Survey Feet Coordinates  
NAD 1983, HARN 1996 Adjustment  
Obtained by RTK GPS Observation

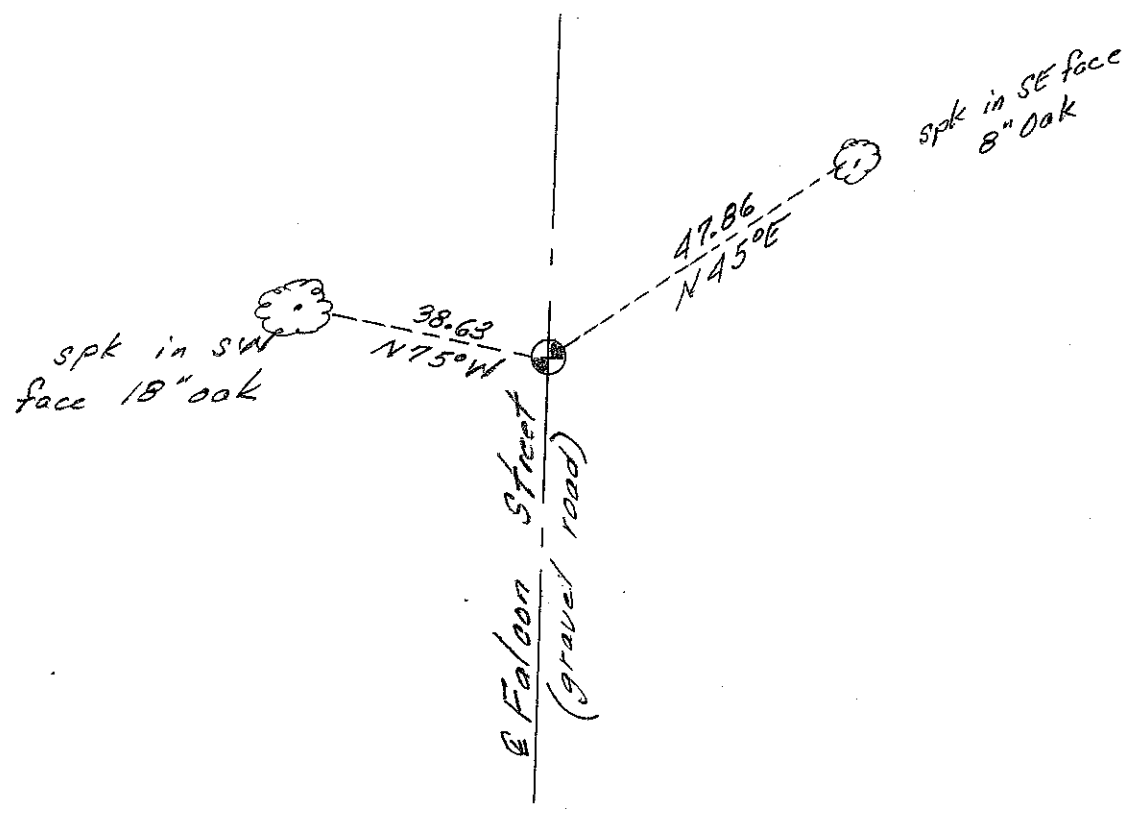
Northing= 182444.79

Easting= 370235.64

Note: NAD 1983, HARN 1996 Adjustment coordinates are NOT compatible with NAD 1983 coordinates

Note: 1 Meter=3937/1200 U.S. Survey Feet

## SKETCH OF REFERENCE TIES



Statement of evidence relative to this corner location is on back of page.

I hereby certify that this document and the data contained herein was prepared by me or under my direct supervision.

Ernest L. Rud 11-27-12  
Signature Date

Registration No. Minn No. 9808

- Land Surveyor,      [ ] Professional Engineer
- [ ] County Surveyor,    [ ] County Engineer

## OFFICE OF THE COUNTY RECORDER

County of \_\_\_\_\_

I hereby certify that this document was filed in the County Recorder's office at \_\_\_\_\_ M. on the \_\_\_\_\_ day of \_\_\_\_\_ A.D., 20\_\_\_\_

County Recorder \_\_\_\_\_

BY \_\_\_\_\_ Deputy

DOCUMENT NO. \_\_\_\_\_

STATEMENT OF EVIDENCE: EAST QUARTER CORNER 14-40-25 4025058  
From tie sheet #612

All of the original bearing trees are now gone.

There is no resurvey data on file for this corner.

In April of 1981, M.B. Rude ran a survey along the west line of Sections 13 and 14 and located the existing monuments and lines of occupation.

This corner falls in a north-south road. There are no occupation lines east or west.

On October 13, 1981, M.B. Rude made an excavation with the County backhoe at this corner. The excavation was 15 feet square, 2.5 feet deep, 1 foot into the natural ground. No evidence was found in the excavation.

M.B. Rude set this corner in the center of the north-south road and at a proportional measurement between the northwest and southwest corner of Section 13.

On April 18, 2012, E.G. Rud & Sons found a cast iron monument laying down at this location down 2 feet. The base of C.I.M. fit 2 remaining ties. A #7 rebar 24" long was set with an aluminum cap. New ties were taken and Kanabec County coordinates established.