

CERTIFICATE OF LOCATION OF GOVERNMENT CORNER

N 1/4 Corner of Section 24, Township 40, Range 25, 4TH P.M.
STATE OF MINNESOTA, County of KANABEC

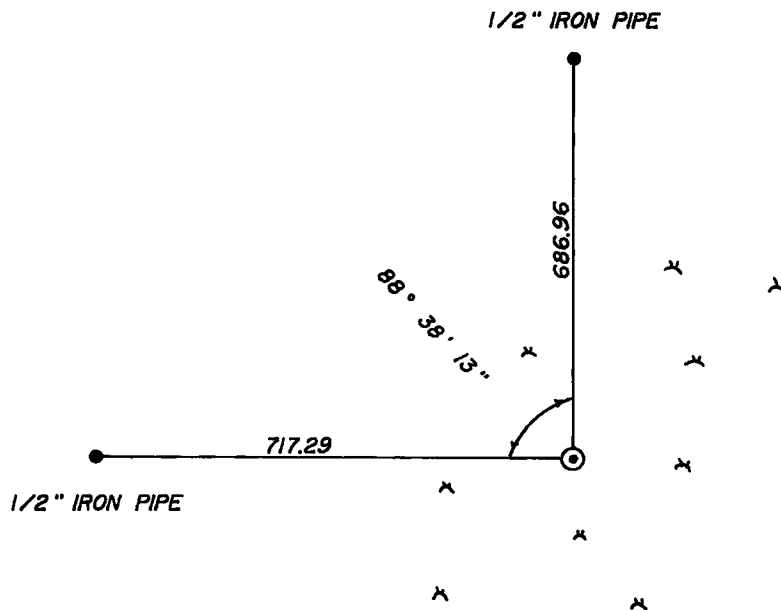
At the corner location shown on the sketch

On found a
Date

left monument as found, lowered monument, removed monument (explain)
 On 2-14-92 placed a 7/8" x 6' CAPPED REBAR
Date

SKETCH OF REFERENCE TIES

N



Statement of evidence relative to this corner location is on back of page.

I hereby certify that this document and the data contained herein was prepared by me or under my direct supervision.

DMB Signature 3-12-92 Date

Registration No. 8195

Land Surveyor, Professional Engineer
 County Surveyor, County Engineer

OFFICE OF THE ^{County Recorder} REGISTER OF DEEDS

County of Kanabec

I hereby certify that this document was filed in the Register of Deeds office at 11 A. M. on the

2 day of February, A.D., 1993

County Recorder Register of Deeds Velma J. Besse

By Deputy

DOCUMENT NO.

STATEMENT OF EVIDENCE

All of the original government bearing trees are now gone.

In February of 1992, we made a survey around Section 13, Township 40, Range 25, and into the adjoining sections to locate existing monuments, lines of occupation and to establish search areas.

We set the north quarter corner of Section 24, Township 40, Range 25, on line and proportional distance between the northeast and northwest corners of Section 24, Township 40, Range 25.