

CERTIFICATE OF LOCATION OF GOVERNMENT CORNER

NE Corner of Section 23, Township 40, Range 25, 4TH P.M.

STATE OF MINNESOTA, County of KANABEC

At the corner location shown on the sketch:

Found C.I.M. down 7" in E of gravel road.

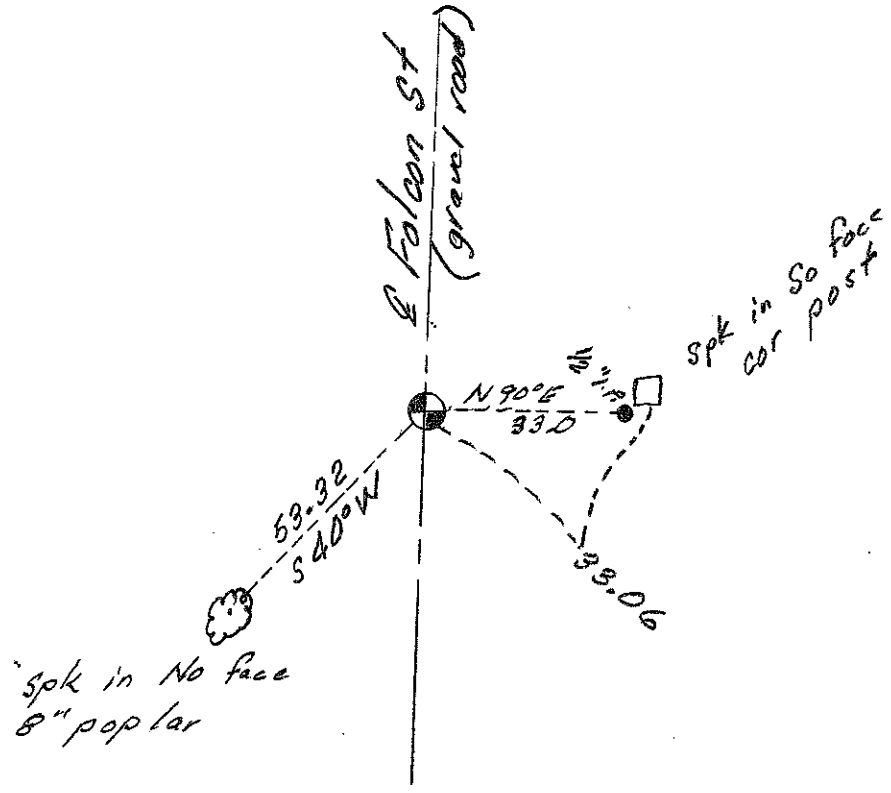
Kanabec County U.S. Survey Feet Coordinates
NAD 1983, HARN 1996 Adjustment
Obtained by RTK GPS Observation

Northing= 179808.01
Easting= 370210.82

Note: NAD 1983, HARN 1996 Adjustment coordinates are NOT compatible with NAD 1983 coordinates

Note: 1 Meter=3937/1200 U.S. Survey Feet

SKETCH OF REFERENCE TIES



Statement of evidence relative to this corner location is on back of page.

I hereby certify that this document and the data contained herein was prepared by me or under my direct supervision.

Ernest J. Red
Signature

11-27-12
Date

Registration No. 9808

Land Surveyor, Professional Engineer

County Surveyor, County Engineer

OFFICE OF THE COUNTY RECORDER

County of _____

I hereby certify that this document was filed in the County Recorder's office at _____ M. on the _____ day of _____ A.D., 20____

County Recorder _____

BY _____ Deputy

DOCUMENT NO. _____

STATEMENT OF EVIDENCE: NORTHEAST CORNER 23-40-25
From tie sheet #511

4025056

All of the original bearing trees are now gone.

There is a road survey by John Nelson dated 1904 for the west line of Section 24 on file at the County Recorder's Office.

In April of 1981, M.B. Rude ran a survey along the west line of Sections 13 and 14 and located the existing monuments and lines of occupation.

This corner falls in a north-south road. There are no occupation lines east or west.

In May of 1981, M.B. Rude made an excavation with the county backhoe at this corner. The excavation was 15 feet wide east-west and 25 feet long north-south and 2 feet deep, 1 foot into the natural ground. No evidence was found in the excavation.

M.B. Rude set this corner in the center of the north-south road per Nelson's survey and by extension of measurements to existing occupation lines at the sixteenth corner and 1/64 corner along the west line of Section 24. This was accepted as the best available evidence of the original corner location. And it is in harmony with the Nelson survey and existing lines of occupation at the subdivision lines.

On April 18, 2012, E.G. Rud & Sons found a cast iron monument at this location. New ties were taken and Kanabec County coordinates established.