

# CERTIFICATE OF LOCATION OF GOVERNMENT CORNER

E<sup>1</sup>/<sub>4</sub> Corner of Section 23, Township 40, Range 25, 4<sup>th</sup> P.M.

STATE OF MINNESOTA, County of KANABEC

At the corner location shown on the sketch:

*Found cast iron monument down 12"  
in gravel road*

Kanabec County U.S. Survey Feet Coordinates  
NAD 1983, HARN 1996 Adjustment  
Obtained by RTK GPS Observation

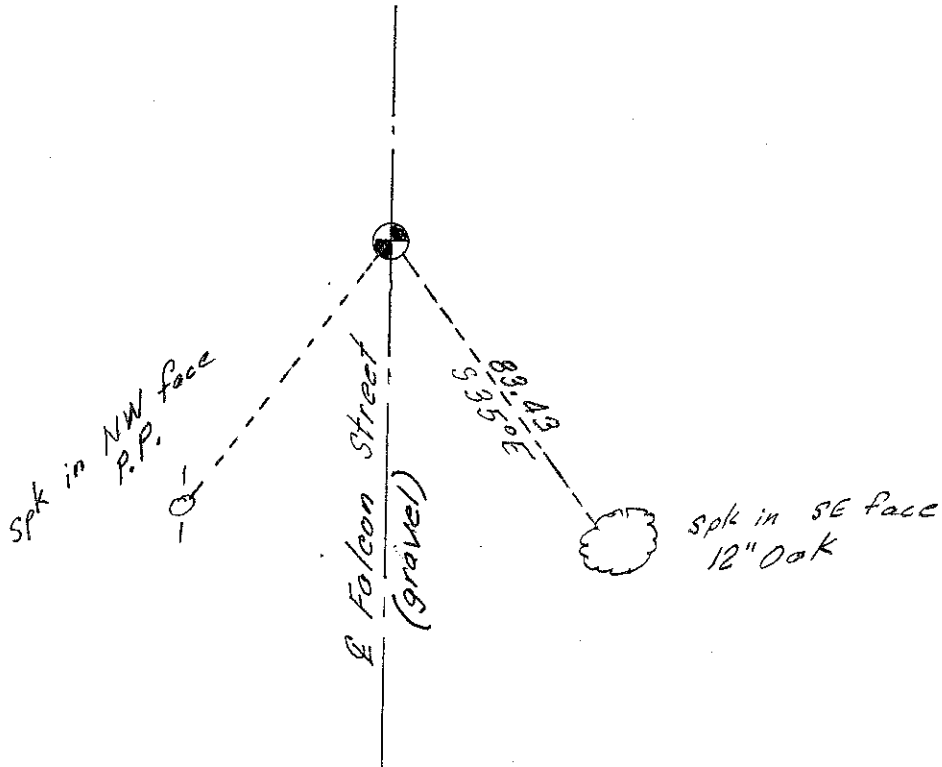
Northing= 177136.60

Easting= 370199.65

Note: NAD 1983, HARN 1996 Adjustment  
coordinates are NOT compatible with  
NAD 1983 coordinates

Note: 1 Meter=3937/1200 U.S. Survey Feet

## SKETCH OF REFERENCE TIES



Statement of evidence relative to this corner location is on back of page.

I hereby certify that this document and the data contained herein was prepared by me or under my direct supervision.

*Ernest L. Rud*  
Signature

11-27-12  
Date

Registration No. Minn No. 9808

Land Surveyor,      [ ] Professional Engineer

[ ] County Surveyor,      [ ] County Engineer

### OFFICE OF THE COUNTY RECORDER

County of \_\_\_\_\_  
I hereby certify that this document was filed in the County Recorder's office at \_\_\_\_\_ M. on the \_\_\_\_\_ day of \_\_\_\_\_ A.D., 20\_\_\_\_

County Recorder \_\_\_\_\_  
BY \_\_\_\_\_ Deputy

DOCUMENT NO. \_\_\_\_\_

STATEMENT OF EVIDENCE: EAST ¼ CORNER 23-40-25      4025055  
From tie sheet #610

All of the original bearing trees are now gone.

There is a road survey by John Nelson dated 1904 for the west line of Section 24 on file at the County Recorder's Office.

In April of 1981, we ran a survey along the west line of Section 13 and 14 and located the existing monuments and lines of occupation.

This corner falls in a north-south road. There are no occupation lines east or west.

On October 13, 1981, we made an excavation with the county backhoe at this corner. The excavation was 15 feet square, 3 feet deep, 1 foot below the corduroy. No evidence was found in the excavation.

We set this corner in the center line of the north-south road per Nelson's survey and by extension of measurements to the existing occupation lines at the sixteenth corner and 1/64<sup>th</sup> corners along the west line of Section 24.

This was accepted as the best available evidence of the original corner location.

On April 18<sup>th</sup>, E.G. Rud & Sons found a cast iron monument at this location. New ties were taken and Kanabec County coordinates established.