

CERTIFICATE OF LOCATION OF GOVERNMENT CORNER

NORTH QUARTER Corner of Section 25, Township 40, Range 25, 4TH P.M.
 STATE OF MINNESOTA, County of KANABEC

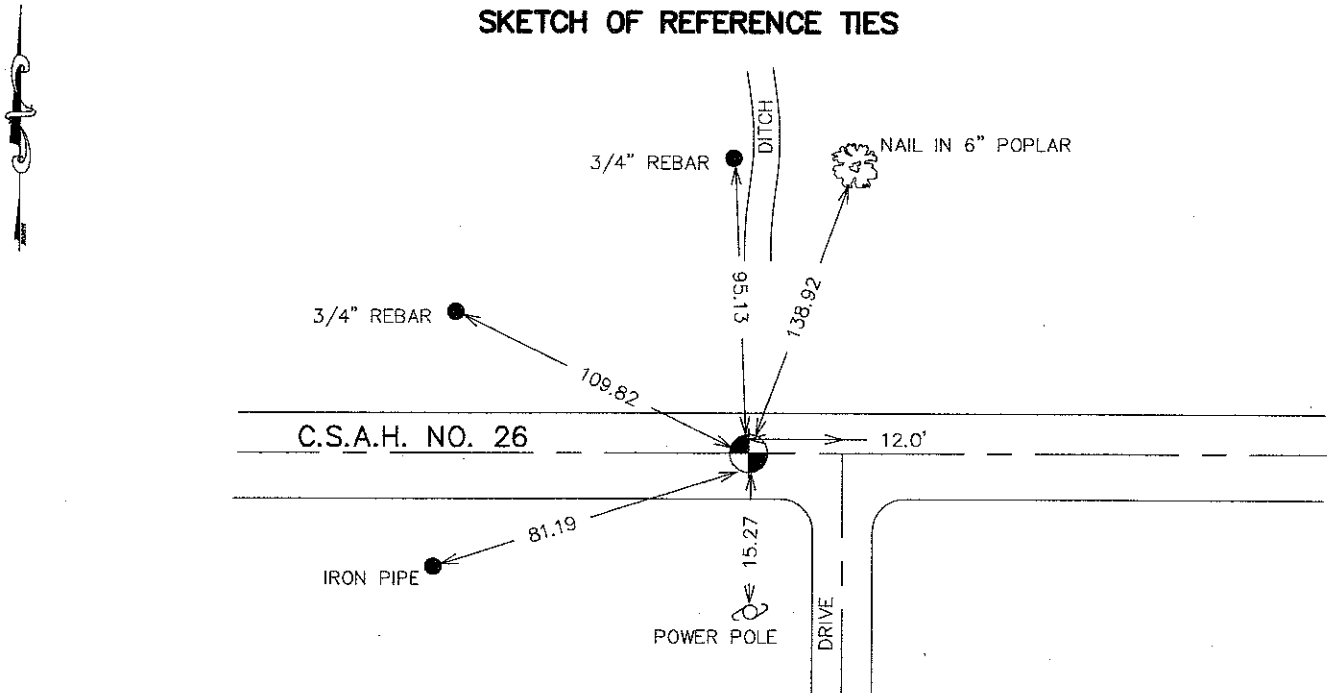
At the corner location shown on the sketch:
 FOUND THIS MONUMENT
 AND ESTABLISHED KANABEC COUNTY COORDINATES ON ITS LOCATION.

Kanabec County U.S. Survey Feet Coordinates
 NAD 1983, HARN 1996 Adjustment
 Obtained by RTK GPS Observation

Northing= 174435.14
 Easting= 372815.85

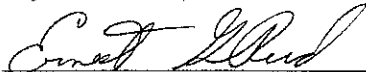
Note: NAD 1983, HARN 1996 Adjustment
 coordinates are NOT compatible with
 NAD 1983 coordinates
 Note: 1 Meter=3937/1200 U.S. Survey Feet

SKETCH OF REFERENCE TIES



Statement of evidence relative to this corner location is on back of page.

I hereby certify that this document and the data contained herein was prepared by me or under my direct supervision.


 Signature Ernest Blund Date 11-25-2007

Registration No. 9808

- Land Surveyor, Professional Engineer
 County Surveyor, County Engineer

OFFICE OF THE COUNTY RECORDER

County of _____

I hereby certify that this document was filed in the County Recorder's office at _____ M. on the _____ day of _____ A.D., 20____

County Recorder _____

BY _____ Deputy

DOCUMENT NO. _____

NORTH QUARTER CORNER SECTION 25, T40, R25

STATEMENT OF EVIDENCE

M.B. RUDE FOUND A 1/2" IRON PIPE SET BY D.N.R. IN 1962 AND 1975. THE D.N.R. PIPE FITS THE OLD FENCE LINE NORTH AND IS VERY CLOSE TO THE SPLIT OF THE NORTH LINE. M.B. RUDE OFFSET THE PIPE AND ATTEMPTED TO MAKE AN EXCAVATION. THE ROAD IS BUILT ON A 24 TO 30" LOG BASE AND HE COULD NOT GET THROUGH THE CORDUROY.

M.B. RUDE ACCEPTED THE D.N.R. PIPE AS THE BEST AVAILABLE EVIDENCE OF THE ORIGINAL CORNER LOCATION.

IN 1994 THE ROADWAY WAS REGRADED. THE COUNTY HIGHWAY DEPARTMENT LOCATED THIS CORNER, MADE NEW REFERENCE TIES OUTSIDE OF THE CONSTRUCTION AREA AND RESET THE CORNER IN 1995 PRIOR TO PAVING.

IN OCTOBER 2007 E.G. RUD AND SONS LOCATED THE CORNER AND ESTABLISHED KANABEC COUNTY COORDINATES ON THIS MONUMENT.