

CERTIFICATE OF LOCATION OF GOVERNMENT CORNER

NORTH EAST Corner of Section 26, Township 40, Range 25, 4TH P.M.

STATE OF MINNESOTA, County of KANABEC

At the corner location shown on the sketch:

FOUND THIS MONUMENT
AND ESTABLISHED KANABEC COUNTY COORDINATES ON ITS LOCATION.

Kanabec County U.S. Survey Feet Coordinates
NAD 1983, HARN 1996 Adjustment
Obtained by RTK GPS Observation

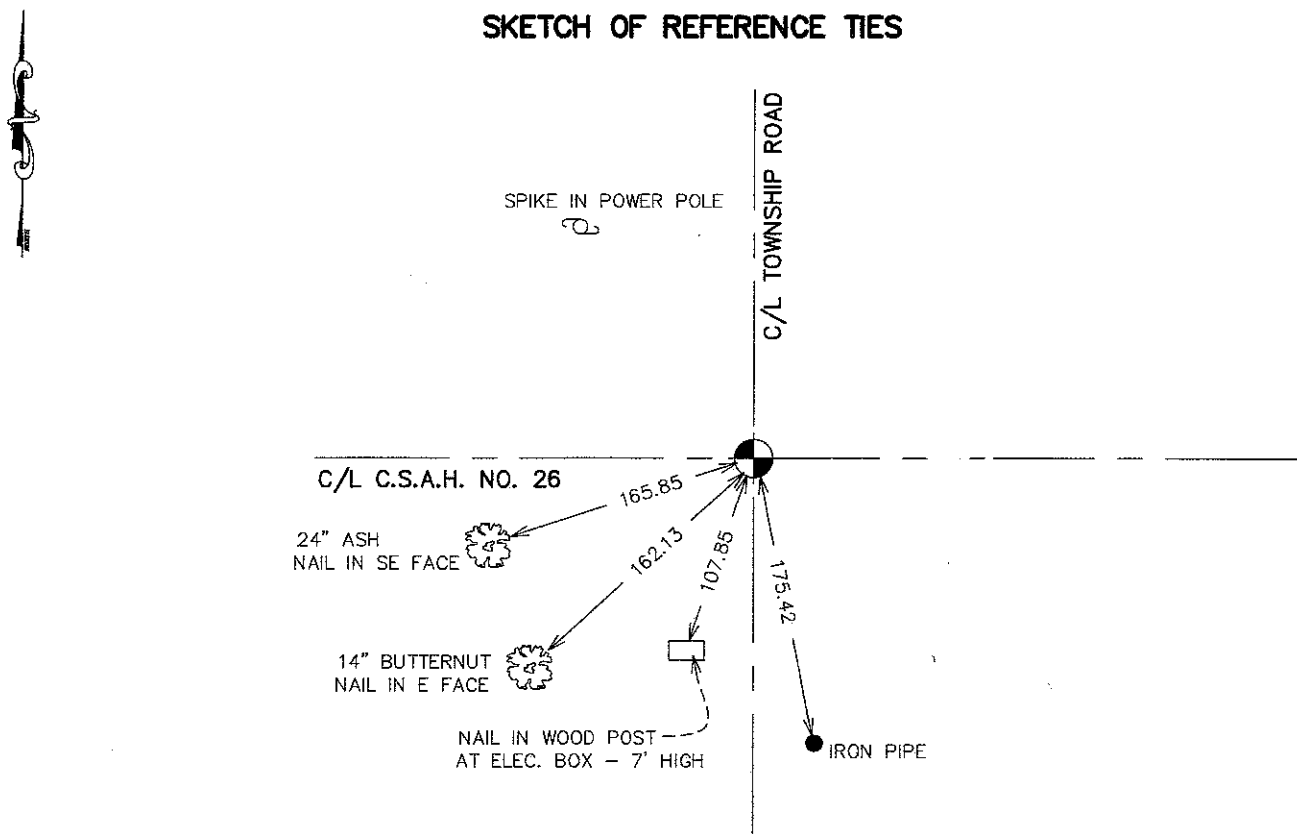
Northing= 174482.37

Easting= 370186.345

Note: NAD 1983, HARN 1996 Adjustment
coordinates are NOT compatible with
NAD 1983 coordinates

Note: 1 Meter=3937/1200 U.S. Survey Feet

SKETCH OF REFERENCE TIES



Statement of evidence relative to this corner location is on back of page.

I hereby certify that this document and the data contained herein was prepared by me or under my direct supervision.

Ernest J. Rud
Signature

8-15-2007
Date

Registration No. Minn No 9808

Land Surveyor, Professional Engineer

County Surveyor, County Engineer

OFFICE OF THE COUNTY RECORDER

County of _____

I hereby certify that this document was filed in the County Recorder's office at _____ M. on the

_____ day of _____ A.D., 20__

County Recorder _____

BY _____ Deputy

DOCUMENT NO. _____

EAST QUARTER CORNER SECTION 26, T40, R25

STATEMENT OF EVIDENCE

M.B. RUDE FOUND A 3/4" PIPE SET BY THE D.N.R. IN 1962 AND 1975 SURVEY. HE OFFSET THE PIPE AND MADE AN EXCAVATION 6 FEET SQUARE, 3 FEET DEEP, 1.5 FEET INTO THE NATURAL GROUND WITH THE BACKHOE.

THE D.N.R. PIPE FITS THE CENTERLINE OF THE INTERSECTION WELL. M.B. RUDE SET A 2 3/4" BY 17" CAST IRON MONUMENT AT THE D.N.R. 3/4" PIPE LOCATION.

COUNTY HIGHWAY DEPARTMENT LOCATED SECTION CORNER PRIOR TO CONSTRUCTION AND PLACED ADDITIONAL REFERENCES OUTSIDE OF THE NEW CONSTRUCTION LIMITS.

THE ROADWAY WAS REGRADED IN 1994.

BEFORE ROADWAY WAS PAVED IN 1995, THE CORNER WAS RE-ESTABLISHED ACCORDING TO REFERENCES OBTAINED PREVIOUSLY.

IN 2003 E.G. RUD AND SONS FOUND THIS MONUMENT AND ESTABLISHED KANABEC COUNTY COORDINATES ON THIS POSITION.