

CERTIFICATE OF LOCATION OF GOVERNMENT CORNER

EAST QUARTER Corner of Section 26, Township 40, Range 25, 4TH P.M.

STATE OF MINNESOTA, County of KANABEC

At the corner location shown on the sketch:

FOUND THIS MONUMENT
AND ESTABLISHED KANABEC COUNTY COORDINATES ON ITS LOCATION.

Kanabec County U.S. Survey Feet Coordinates
NAD 1983, HARN 1996 Adjustment
Obtained by RTK GPS Observation

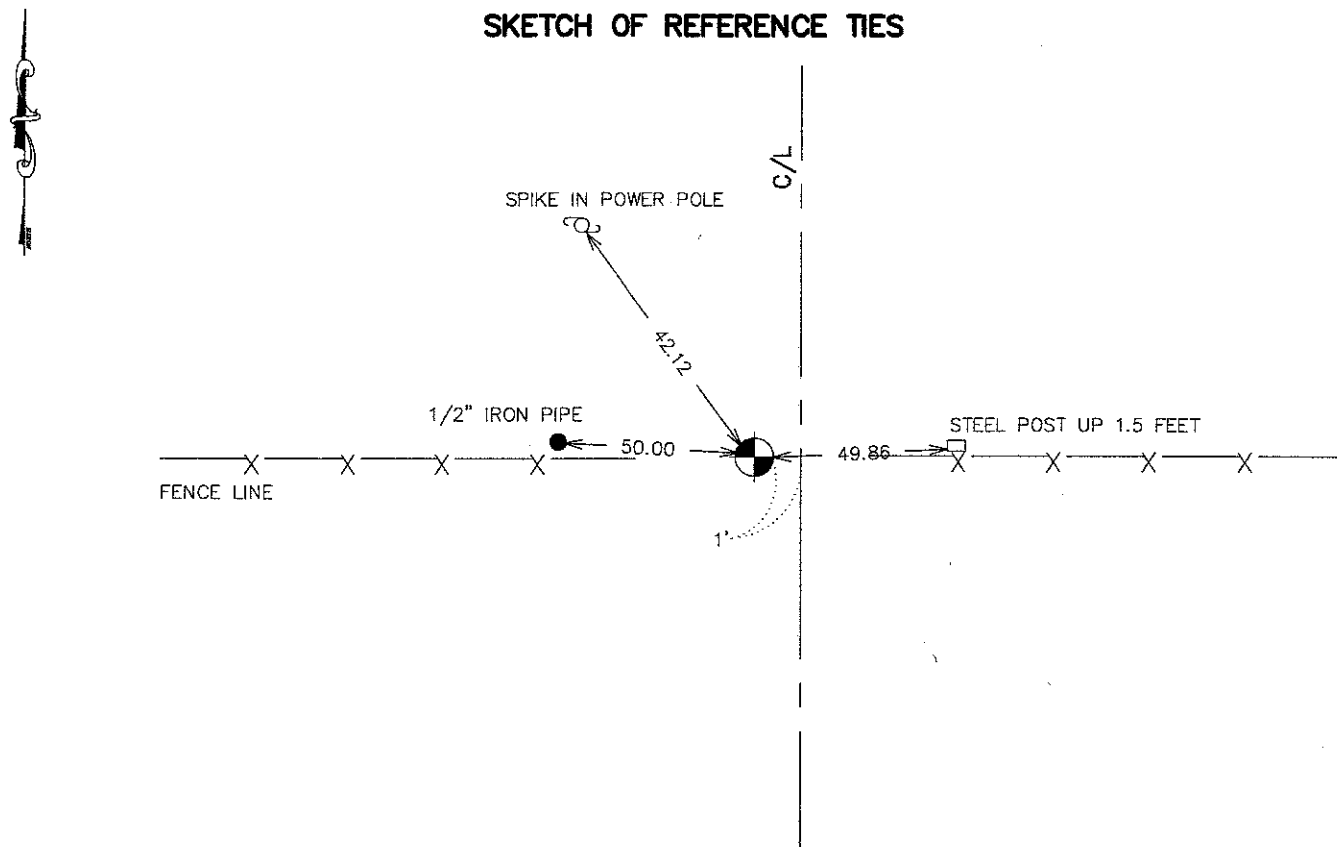
Northing= 171868.56

Easting= 370133.05

Note: NAD 1983, HARN 1996 Adjustment
coordinates are NOT compatible with
NAD 1983 coordinates

Note: 1 Meter=3937/1200 U.S. Survey Feet

SKETCH OF REFERENCE TIES



Statement of evidence relative to this corner location is on back of page.

I hereby certify that this document and the data contained herein was prepared by me or under my direct supervision.

Ernest J. Reed Aug 15, 2007
Signature Date

Registration No. Minn No 9808

- Land Surveyor, Professional Engineer
 County Surveyor, County Engineer

OFFICE OF THE COUNTY RECORDER

County of _____

I hereby certify that this document was filed in the County Recorder's office at _____ M. on the _____ day of _____ A.D., 20____

County Recorder _____

BY _____ Deputy

DOCUMENT NO. _____

EAST QUARTER CORNER SECTION 26, T40, R25

STATEMENT OF EVIDENCE

THE COUNTY SURVEY RECORDS SHOW THAT A SANDSTONE WITH AN "X" WAS SET AT SPLIT BETWEEN THE NORTHWEST AND SOUTHWEST CORNERS.

THE DEPARTMENT OF NATURAL RESOURCES USED A SPLIT OF THE WEST LINE FOR THE QUARTER CORNER.

M.B. RUDE MADE AN EXCAVATION IN THE CENTER LINE OF THE ROAD NORTH-SOUTH AND FENCE LINE EAST-WEST. AT 1 FOOT BELOW THE SURFACE HE FOUND A 14" BY 14" STONE WITH AN "X" ON THE TOP. HE OFFSET THE STONE AND LOWERED THE STONE AND RESET AT 2 FEET BELOW THE SURFACE.

M.B. RUDE SET A 2 3/4" BY 17" CAST IRON MONUMENT ON TOP OF THE STONE AT 6" BELOW THE SURFACE.

IN DECEMBER 2006 E.G. RUD AND SONS FOUND THIS MONUMENT AND ESTABLISHED KANABEC COUNTY COORDINATES ON THE LOCATION USING G.P.S. EQUIPMENT.