

# CERTIFICATE OF LOCATION OF GOVERNMENT CORNER

Witness Corner #2 on East line of Section 35, Township 40 North, Range 25 West, 4th Principal Meridian, Kanabec County, State of Minnesota

At the corner location shown on the sketch:  
On 4/20/2018 set a 1/2" x 14" Rebar monument with plastic cap marked KROSCHER 44490.

Kanabec County U.S. Survey Feet Coordinates  
NAD 1983, HARN 1996 Adjustment  
Obtained by RTK GPS observation  
Northing: 169133.8070  
Easting: 370083.9621

Note: NAD 1983, HARN 1996 Adjustment coordinates are NOT compatible with NAD 1983 coordinates

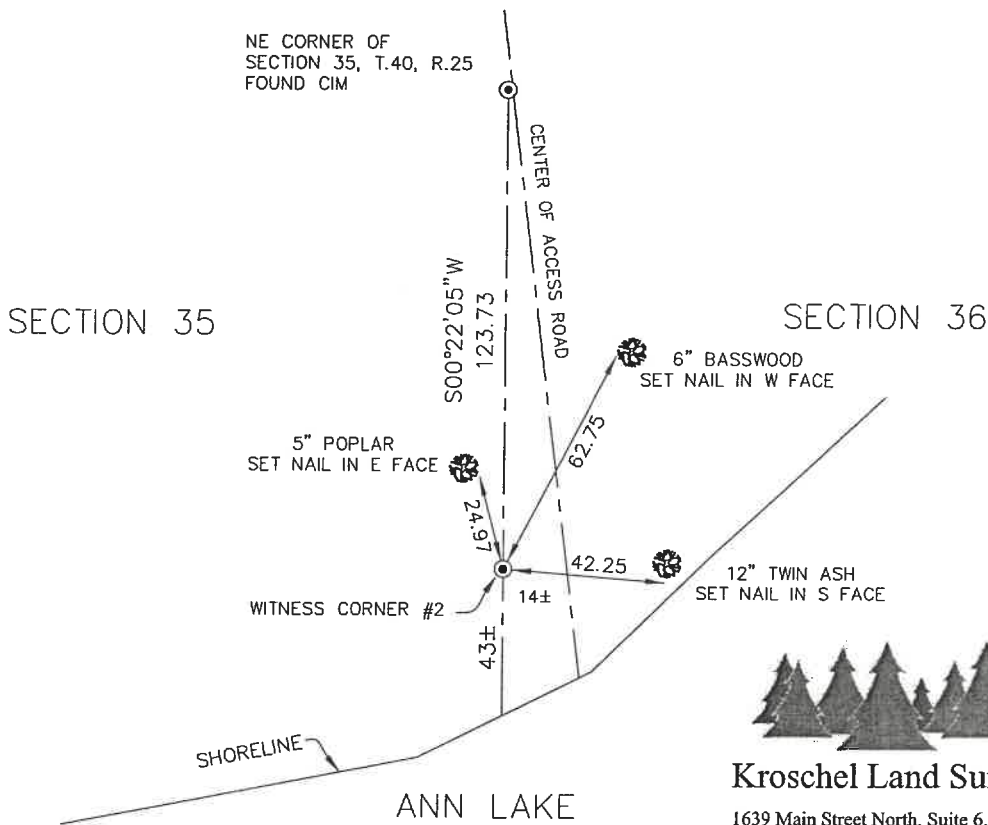
Note: 1 Meter = 3937/1200 U.S. Survey Feet

## SKETCH OF REFERENCE TIES

NOT TO SCALE

DISTANCE UNITS FOR THIS DRAWING IS U.S. SURVEY FEET

THE BASIS OF BEARINGS FOR THIS DRAWING IS THE KANABEC COUNTY COORDINATE SYSTEM BY MNDOT, NAD 1983, HARN 1996 ADJUSTMENT



**Kroschel Land Surveyors, Inc.**

1639 Main Street North, Suite 6, Pine City, MN 55063  
Phone: 320-629-3267 Fax: 320-629-0176

Statement of evidence relative to this corner location is on back of page.

I hereby certify that this report was prepared by me or under my direct supervision, that the United States public land survey monument record is correct and complete to the best of my knowledge and belief, and that I am a duly Licensed Land Surveyor under the laws of the State of Minnesota.

Tyler J. Kroschel, County Surveyor

License No. 44490

1-27-2021  
Date

**OFFICE OF THE COUNTY RECORDER**  
County of Kanabec

I hereby certify that this document was filed in the County Recorder's office at \_\_\_\_\_ .M. on the \_\_\_\_\_ day of \_\_\_\_\_ A.D., 20\_\_\_\_

County Recorder \_\_\_\_\_, Deputy

DOCUMENT NO. \_\_\_\_\_

Statement of Evidence:

In October of 1855, Deputy Surveyor Silas Barnard set a post to mark Meander Corner #2 on the east line of Section 35, Township 40 North, Range 25 West, 4th Principal Meridian.

Reference ties were taken to:

- 10 inch Basswood at North 10 degrees East a distance of 8 links
- 12 inch Basswood at North 2 degrees West a distance of 38 links

The original meander corner was set 3 chains (198 feet) south of the northeast corner of Section 35. This would be in the water of the Ann Lake. There is a DNR controlled dam at the outlet of Ann Lake, which has raised the original water level slightly. All of the original Government corner evidence was searched for. None was found.

2014- Kyle Roddy, LS 42627 surveyed the plat of Maple Shores, located in the office of the County Recorder. Roddy shows the east line of the Southeast Quarter of Section 35. He did not place any monuments at the lakeshore, but the bearing of his east line appears to be on a straight line between the Southeast and Northeast corners of Section 35.

In April 2018, I made a survey in the Northeast Quarter of Section 35, Township 40 North, Range 25 West, 4th Principal Meridian for Isaiah Boehlert to locate existing monuments, lines of occupation and establish search areas.

On 4/20/2018 a search was made with a magnetic locator. No evidence of corner was found. I set a 1/2" x 14" Rebar monument with plastic cap marked KROSCHER 44490 for a Witness corner near the shoreline and on a straight line between the Southeast and Northeast corners of Section 35.

Established reference ties and assigned Kanabec County Coordinates. This location was determined to be the best available evidence of the original section line location.



**Kroschel Land Surveyors, Inc.**

1639 Main Street North, Suite 6, Pine City, MN 55063  
Phone: 320-629-3267 Fax: 320-629-0176