

# CERTIFICATE OF LOCATION OF GOVERNMENT CORNER

NORTH QUARTER Corner of Section 1, Township 39, Range 25, 4TH P.M.

STATE OF MINNESOTA, County of KANABEC

At the corner location shown on the sketch:  
SET #7 REBAR WITH ALUMINIUM CAP

Kanabec County U.S. Survey Feet Coordinates  
NAD 1983, HARN 1996 Adjustment  
Obtained by RTK GPS Observation

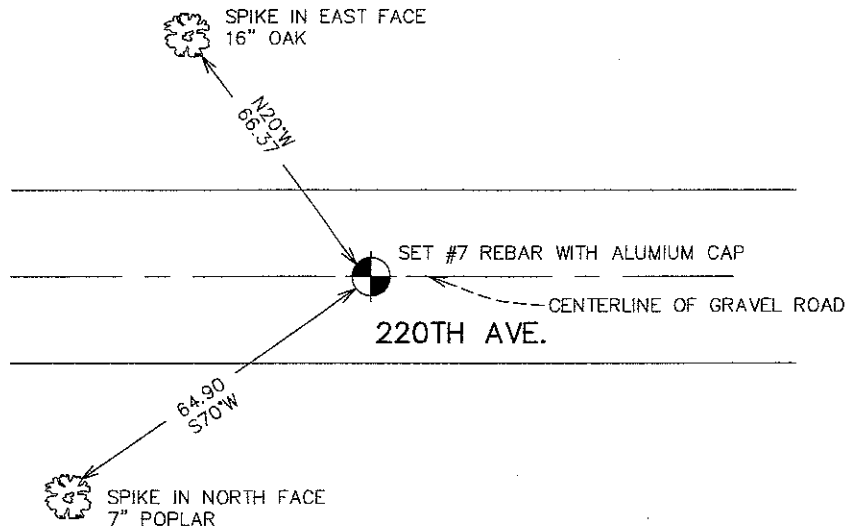
Northing= 163881.11

Easting= 372746.90

Note: NAD 1983, HARN 1996 Adjustment  
coordinates are NOT compatible with  
NAD 1983 coordinates

Note: 1 Meter=3937/1200 U.S. Survey Feet

## SKETCH OF REFERENCE TIES



Statement of evidence relative to this corner location is on back of page.

I hereby certify that this document and the data contained herein was prepared by me or under my direct supervision.

Ernest J. Hud  
Signature

12-10-2007  
Date

Registration No. 9808

- Land Surveyor,       Professional Engineer  
 County Surveyor,     County Engineer

### OFFICE OF THE COUNTY RECORDER

County of \_\_\_\_\_

I hereby certify that this document was filed in the County Recorder's office at \_\_\_\_\_ M. on the \_\_\_\_\_ day of \_\_\_\_\_ A.D., 20\_\_\_\_

County Recorder \_\_\_\_\_

BY \_\_\_\_\_ Deputy

DOCUMENT NO. \_\_\_\_\_

# NORTH QUARTER CORNER SECTION 1, T39, R25

## STATEMENT OF EVIDENCE

THE ORIGINAL CORNER WAS SET BY DEPUTY SURVEYOR SILAS BARNARD IN NOVEMBER, 1849 AND A SUGAR MAPLE AND BIRCH WERE USED AS BEARING TREES - NO VISIBLE EVIDENCE REMAINS FOR THE CORNER OR BEARING TREE.

ON SEPTEMBER 12TH 1910, JOHN NELSON RECORDED DOING A ROAD SURVEY ALONG THE NORTH LINE OF SECTIONS 1 AND 2 IN BOOK A1, PAGES 64-66. HE DOES NOT STATE THAT ANYTHING WAS SET AT THIS CORNER. THIS CORNER FALLS ON THE CENTERLINE OF AN EAST-WEST GRAVEL ROAD WITH NO OCCUPATION LINES RUNNING NORTH OR SOUTH. ON OCTOBER 31ST AN EXCAVATION WAS MADE ON THE CENTERLINE EQUIDISTANT FROM THE NORTHWEST TO THE NORTHEAST CORNER OF SECTION 1. THIS FELL IN A PEAT SWAMP WITH A CORDROY ROAD HAVING BEEN CONSTRUCTED OVER IT. THE EXCAVATION WENT 1 FOOT INTO THE PEAT BUT NO EVIDENCE COULD BE FOUND. THIS CORNER WAS SET ON LINE AND EQUIDISTANT FROM THE NORTHEAST AND NORTHWEST CORNER OF SECTION 1.

A #7 REBAR WITH AN ALUMINUM CAP WAS SET, TIES TAKEN AND KANABEC COUNTY COORDINATES ESTABLISHED ON THIS CORNER. OUR MEASUREMENT ALONG THE NORTH LINE OF SECTION 1 WAS 5401.28 FEET WHILE JOHN NELSON MEASURED 5389.56 IN 1910 SO MEASUREMENTS ARE CLOSE.