

CERTIFICATE OF LOCATION OF GOVERNMENT CORNER

SOUTHEAST Corner of Section 32, Township 40, Range 25, 4TH P.M.

STATE OF MINNESOTA, County of KANABEC

At the corner location shown on the sketch:
FOUND THIS MONUMENT
AND ESTABLISHED G.P.S. COORDINATES ON ITS LOCATION.

Kanabec County U.S. Survey Feet Coordinates
NAD 1983, HARN 1996 Adjustment
Obtained by RTK GPS Observation

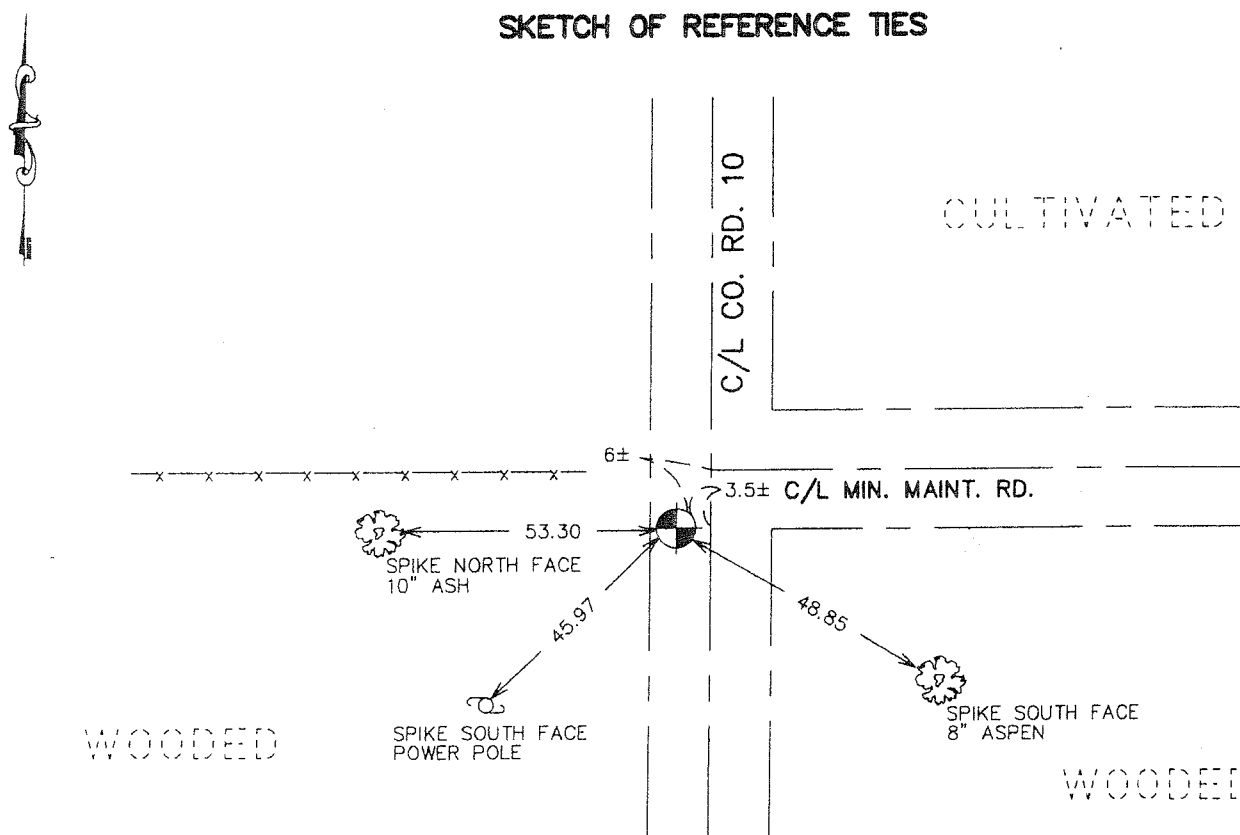
Northing= 165064.98

Easting= 353590.15

Note: NAD 1983, HARN 1996 Adjustment
coordinates are NOT compatible with
NAD 1983 coordinates

Note: 1 Meter=3937/1200 U.S. Survey Feet

SKETCH OF REFERENCE TIES



NOTE: C.I.M. SET 0.2' BELOW
GRAVEL ROAD SURFACE

Statement of evidence relative to this corner location is on back of page.

I hereby certify that this document and the data contained herein was prepared by me or under my direct supervision.

Ernest Blum
Signature 1-24-2007
Date

Registration No. Minn No 9808

- Land Surveyor, Professional Engineer
- County Surveyor, County Engineer

OFFICE OF THE COUNTY RECORDER

County of _____

I hereby certify that this document was filed in the County Recorder's office at _____ M. on the

_____ day of _____ A.D., 20__

County Recorder _____

BY _____ Deputy

DOCUMENT NO. _____

SOUTHEAST CORNER SECTIONS 32, T40, R25

STATEMENT OF EVIDENCE

THE NORTHEAST CORNER OF SECTION 5 WAS ORIGINALLY SET IN 1849 BY SILAS BARNARD, DEPUTY SURVEYOR. A POST WAS PLACED AND WITNESS TREES ESTABLISHED. NO REMAINS OF THE POST OR WITNESS TREES WERE FOUND.

DURING A SURVEY PERFORMED BY MICHAEL TRUNK IN THE SOUTHWEST QUARTER OF SECTION 32 TOWNSHIP 40 RANGE 25. A POSITION WAS ASSUMED FOR THE SUBJECT CORNER AT THE INTERSECTION OF THE NORTH-SOUTH TOWNSHIP ROAD AND A FENCE LINE FOUND WEST OF THE SUBJECT CORNER. THIS POSITION WAS USED TO PRORATE A DISTANCE TO A FOUND STONE MONUMENT AT THE SOUTHWEST CORNER OF SECTION 31, TOWNSHIP 40, RANGE 25 WHICH RESULTED IN A CLOSE COMPARISON OF THE DISTANCES MEASURED BY JOHN NELSON, COUNTY SURVEYOR, IN 1910 ALONG THE SOUTH LINE OF SECTION 32, TOWNSHIP 40, RANGE 25. A CAST IRON MONUMENT WAS PLACED AT THIS ASSUMED POSITION OF OCCUPATION ON AUGUST 26, 1991.

ON SEPTEMBER 18, 1992 AT THE REQUEST OF THE KANABEC COUNTY SURVEYOR MIKE EXCAVATED AND RECOVERED A SANDSTONE MONUMENT WITH AN "X" INSCRIBED ON ITS TOP. THE MONUMENT WAS LEFT AS FOUND AND PLACED A KANABEC COUNTY CAST IRON MONUMENT OVER IT. NO ADJUSTMENTS TO THE PREVIOUSLY PLACED MONUMENTS IN SECTION 32 WERE MADE.

THE ASSUMED POSITION OF THE SUBJECT CORNER THAT WAS USED TO SET THE NORTH QUARTER CORNER AND THE NORTHWEST CORNERS OF SECTION 5 WAS 1.68 FEET SOUTH AND 4.10 FEET WEST OF THE FOUND STONE.

IN 2003 E.G. RUD AND SONS FOUND THIS C.I.M. AND ESTABLISHED KANABEC COUNTY COORDINATES USING G.P.S. EQUIPMENT.