

CERTIFICATE OF LOCATION OF GOVERNMENT CORNER

NORTHWEST Corner of section 31, Township 40, Range 25, 4TH P.M.

STATE OF MINNESOTA, County of KANABEC

At the corner location shown on the sketch:
 FOUND THIS MONUMENT
 AND ESTABLISHED G.P.S. COORDINATES ON ITS LOCATION.

Kanabec County U.S. Survey Feet Coordinates
 NAD 1983, HARN 1996 Adjustment
 Obtained by RTK GPS Observation

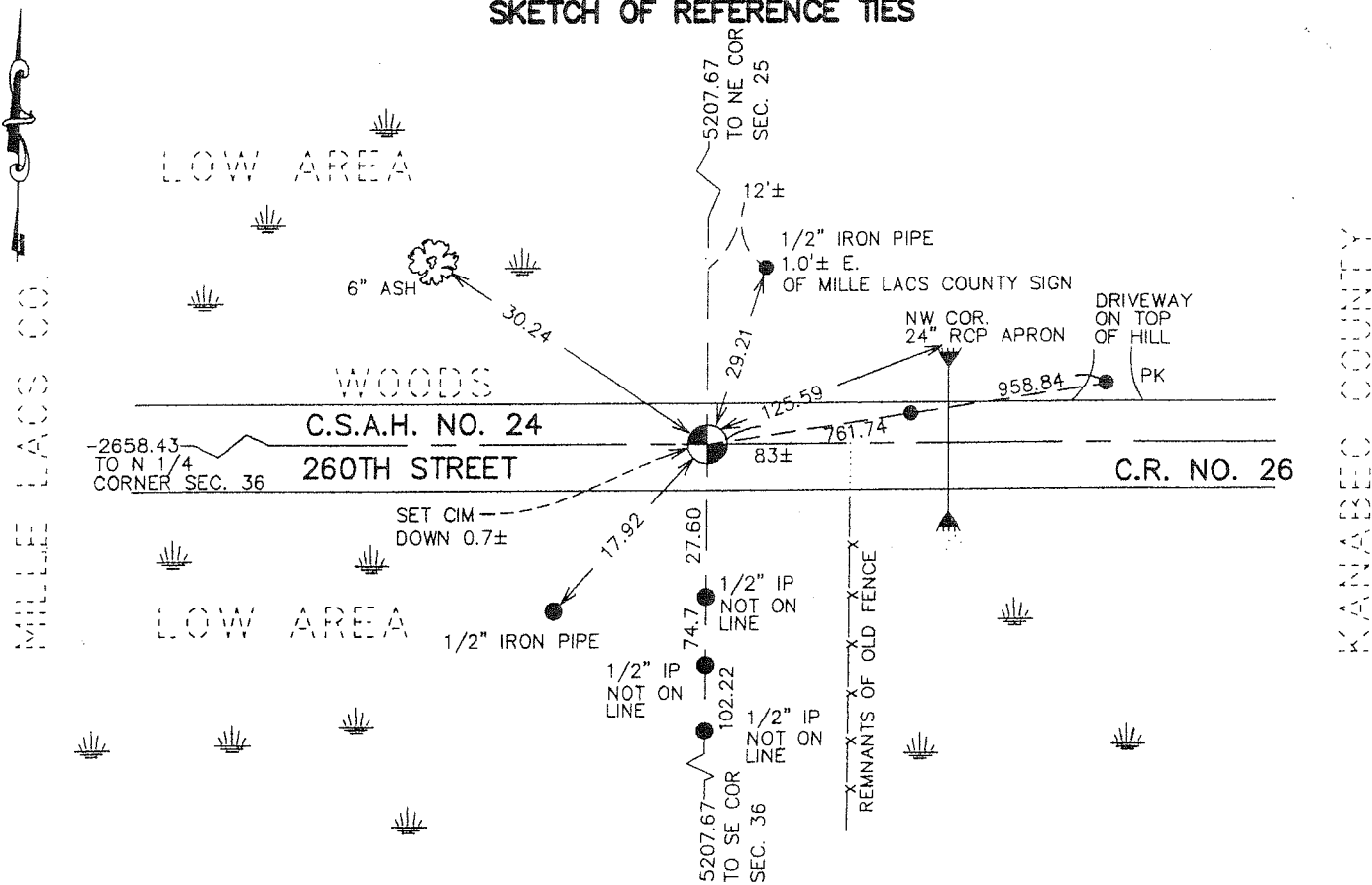
Northing= 170817.10

Easting= 342606.29

Note: NAD 1983, HARN 1996 Adjustment
 coordinates are NOT compatible with
 NAD 1983 coordinates

Note: 1 Meter=3937/1200 U.S. Survey Feet

SKETCH OF REFERENCE TIES



Statement of evidence relative to this corner location is on back of page.

I hereby certify that this document and the data contained herein was prepared by me or under my direct supervision.

Ernest J. Rud
 Signature

1-24-2007
 Date

Registration No. Minn No 9808

- Land Surveyor, Professional Engineer
 County Surveyor, County Engineer

OFFICE OF THE COUNTY RECORDER

County of _____

I hereby certify that this document was filed in the County Recorder's office at _____ M. on the _____ day of _____ A.D., 20____

County Recorder _____

BY _____ Deputy

DOCUMENT NO. _____

NORTHWEST CORNER SECTIONS 31, T40, R25

STATEMENT OF EVIDENCE

THE EAST LINE OF TOWNSHIP 40, RANGE 26, WAS RUN BY DEPUTY SURVEYOR THEO. CONKEY IN DECEMBER 1849. ANY REMNANTS OF THIS MONUMENT OR ACCESSORIES FOR THIS CORNER ARE NOT VISIBLE.

THERE ARE NO SUBSEQUENT "OLD SURVEY" RECORDS ON FILE WITH THOSE KEPT IN THE SURVEY RECORD BOOKS NOW IN THE VAULT AT THE COUNTY HIGHWAY DEPARTMENT.

THE ONLY OTHER SUBSEQUENT SURVEYS THAT WE ARE AWARE OF IS ONE BY KANABEC COUNTY HIGHWAY DEPARTMENT FOR COUNTY ROAD #26. THEIR RIGHT-OF-WAY MAP SHOWS AN ASSUMED CORNER ON ROAD CENTERLINE AT A LINE OF (ONLY) SEVERAL WOOD POSTS SOUTH.

DURING A 1990 SURVEY FOR ALIGNMENT CONTROL FOR C.S.A.H. #24, JOHN OLIVER SET A RAILROAD SPIKE AT MIDPOINT AND ON LINE BETWEEN THE FOUND STONE AT THE SOUTHEAST CORNER OF SECTION 36 AND OUR RESTORED NORTHEAST CORNER OF SECTION 25. AS CAN BE SEEN ON THE FRONT HEREOF THIS POSITION BEST FITS THE ROAD CENTERLINE WEST, AND EAST.

NOTE: THE IMMEDIATE CENTERLINE (OF KANABEC COUNTY ROAD #26) EAST IS ON THE ABOVE POSITION. THERE IS HOWEVER A BEND IN SAID CENTERLINE AT THE CREST OF A HILL SOME 960' EAST. THE CENTERLINE EAST OF THAT POINT, WHEN PROJECTED WEST, FALLS APPROXIMATELY 28' SOUTH OF THE ABOVE CORNER POSITION.

THERE ARE NO NORTH-SOUTH OCCUPATION LINES IN THE VICINITY OTHER THAN THAT ON THE ABOVE RIGHT-OF-WAY MAP. THE SUBSEQUENT DISTANCE WEST TO THE NORTH QUARTER CORNER OF SECTION 36 IS REASONABLE WHEN COMPARED TO THE GOVERNMENT. ALTHOUGH THIS POSITION IS SOME 83' WEST OF THE ABOVE FEW POSTS SOUTH, THE SUBSEQUENT EAST QUARTER CORNER OF SECTION 36, ALSO ON SAID STRAIGHT LINE, FALLS ON A NORTH-SOUTH FENCE (SEE THAT CERTIFICATE) IN ADDITION, THE GLO TIE TO THE EDGE OF THE SWAMP EAST WAS 363'. WE NOW MEASURE ABOUT 338, WHICH IS WITHIN A HALF OF CHAIN OF GOVERNMENT, AND THUS FITS WITHIN THEIR "STANDARD" FOR MEASUREMENTS TO SUCH PHYSICAL FEATURES.

THE MILLE LACS COUNTY HIGHWAY DEPARTMENT MADE TRANSIT TIES TO OUR ABOVE CORNER AND, ON 07/07/94, PLACED A COUNTY CAST IRON MONUMENT AS SHOWN ON THE FRONT HEREOF.

IN 2003 E.G. RUD AND SONS FOUND THIS C.I.M. AND ESTABLISHED KANABEC COUNTY COORDINATES ON THIS CORNER.