

CERTIFICATE OF LOCATION OF GOVERNMENT CORNER

NORTHWEST Corner of Section 30, Township 40, Range 25, 4TH P.M.

STATE OF MINNESOTA, County of KANABEC

At the corner location shown on the sketch:
FOUND THIS MONUMENT
AND ESTABLISHED G.P.S. COORDINATES ON ITS LOCATION.

Kanabec County U.S. Survey Feet Coordinates
NAD 1983, HARN 1996 Adjustment
Obtained by RTK GPS Observation

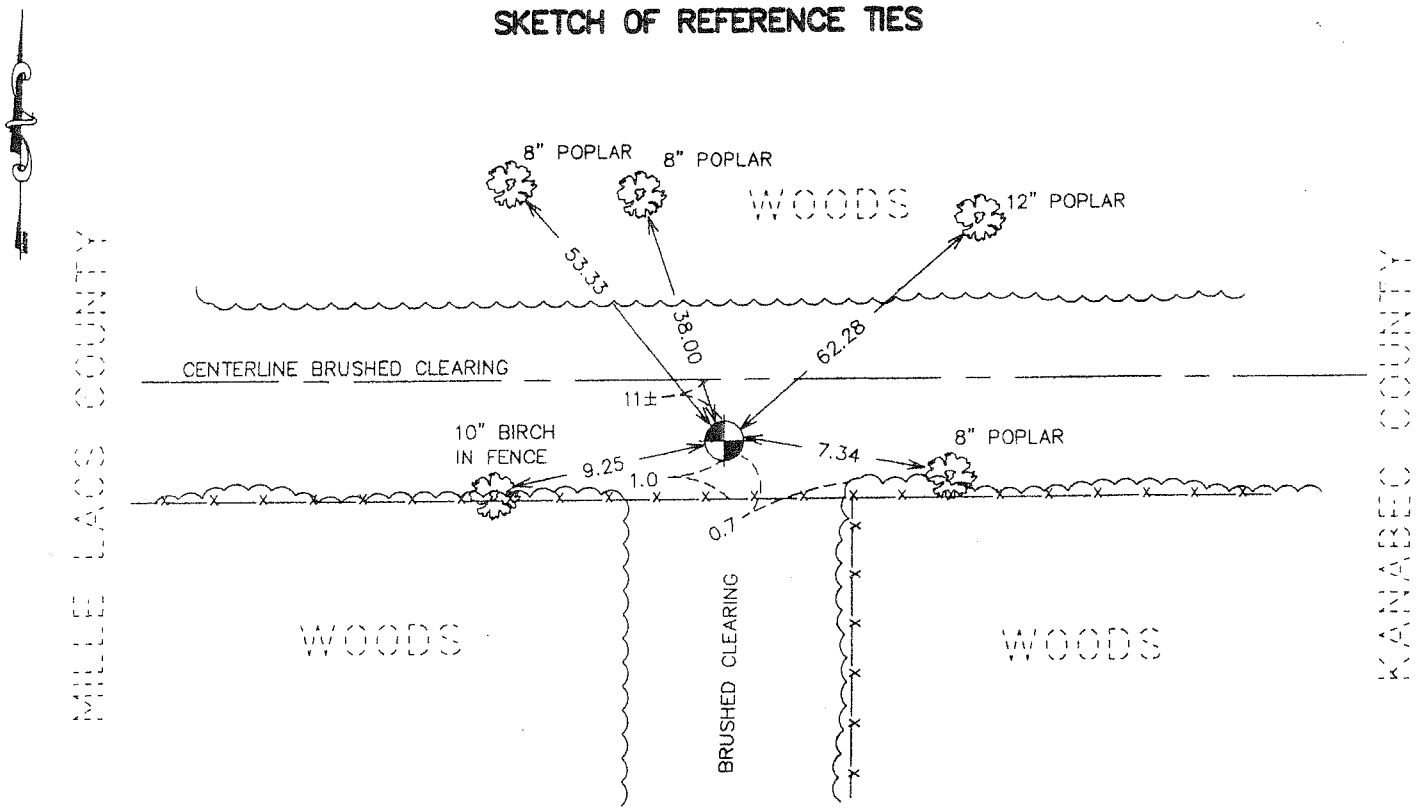
Northing= 176024.76

Easting= 342609.06

Note: NAD 1983, HARN 1996 Adjustment
coordinates are NOT compatible with
NAD 1983 coordinates

Note: 1 Meter=3937/1200 U.S. Survey Feet

SKETCH OF REFERENCE TIES



Statement of evidence relative to this corner location is on back of page.

I hereby certify that this document and the data contained herein was prepared by me or under my direct supervision.

Ernest Alund
Signature

1-24-2007
Date

Registration No. Minn No 9808

Land Surveyor, Professional Engineer

County Surveyor, County Engineer

OFFICE OF THE COUNTY RECORDER

County of _____

I hereby certify that this document was filed in the County Recorder's office at _____ M. on the

_____ day of _____ A.D., 20____

County Recorder _____

BY _____ Deputy

DOCUMENT NO. _____

NORTHWEST CORNER SECTIONS 30, T40, R25

STATEMENT OF EVIDENCE

THE EAST LINE OF TOWNSHIP 40, RANGE 26 WAS RUN BY DEPUTY SURVEYOR THEO CONKEY IN DECEMBER 1849. ANY REMNANTS OF HIS MONUMENT OR ACCESSORIES FOR HIS CORNER ARE NOT VISIBLE.

THERE ARE NO SUBSEQUENT "OLD SURVEY" RECORDS ON FILE WITH THOSE KEPT IN THE SURVEY RECORD BOOKS NOW IN THE VAULT AT THE MILLE LACS COUNTY HIGHWAY DEPARTMENT.

THERE ARE NO OTHER SUBSEQUENT SURVEYS THAT WE ARE AWARE OF.

AS A PART OF OUR SURVEY FOR THE COUNTY FOR ALIGNMENT CONTROL FOR CSAH #20 ON 01/11/1991, JOHN OLIVER TRAVERSED EAST FROM THE FOUND NO. 1/4 CORNER OF THIS SECTION IN ORDER TO LOCATE OCCUPATION LINES AND OTHER EVIDENCE RELATIVE TO CORNERS FOR THE PROJECT. (SEE THE CERTIFICATE FOR SAID NO. 1/4 CORNER OF SECTION 25, FOR WHICH WE FOUND AN OLD SURVEY DISTANCE OF 2593.0 FOR THE HALF MILE TO THE NORTHWEST CORNER OF THE SECTION, AND FOR WHICH WE MEASURED 2593.36') WE FOUND A FENCE AT 194.3' EAST OF THE NO. 1/4 CORNER, BUT NOTHING AT THAT DISTANCE DOUBLED EAST. WE DID FIND A FENCE CORNER SOME 131' EAST OF THAT AT A WELL ESTABLISHED CORNER OF FENCES EAST AND SOUTH. THERE WERE ALSO CLEARED OPENINGS ALONG SAID FENCES INDICATING LOCAL ACCEPTANCE OF THIS AS THE SECTION CORNER AND LINES.

JOHN OLIVER WAS TRYING TO FIND THE SUBJECT CORNER TO HELP IN DETERMINING THE NEEDED NORTHEAST CORNER OF SECTION 36 A MILE SOUTH. SUBSEQUENT ANALYSIS OF POSITIONS, OCCUPATION, AND DISTANCES REVEALED THAT SPM ALONG A STRAIGHT LINE FROM THE ABOVE FENCE CORNER TO THE FOUND STONE 2 MILES SOUTH, FIT THE EAST-WEST ROAD CENTERLINE AT SAID NORTHEAST CORNER OF SECTION 36, AND FIT A NORTH-SOUTH FENCE AT THE SPM POSITION FOR THE EAST QUARTER CORNER OF SECTION 36. THIS EVIDENCE, COMBINED WITH THE SUBSEQUENT DISTANCES BEING REASONABLE AS COMPARED TO THE GOVERNMENT HELPED US DECIDE THAT THE ABOVE FENCE CORNER WAS THE BEST EVIDENCE OF THE PERPETUATION OF THE GOVERNMENT MONUMENT AT THE SUBJECT CORNER.

BASED ON THAT EVIDENCE JOHN OLIVER PLACED A 1" BY 3" IRON PIPE, AS SHOWN ON THE FRONT HEREOF, AT A CONVENIENT PLACE ADJACENT TO THE FENCE CORNER POST. WE HELD SAID PIPE AS THE ACTUAL CORNER AND MADE THE TIES AS SHOWN ON THE FRONT THEREOF.

IN 2003 E.G. RUD AND SONS FOUND THIS MONUMENT AND ESTABLISHED KANABEC COUNTY COORDINATES ON THIS POSITION USING G.P.S. EQUIPMENT.