

4025 019

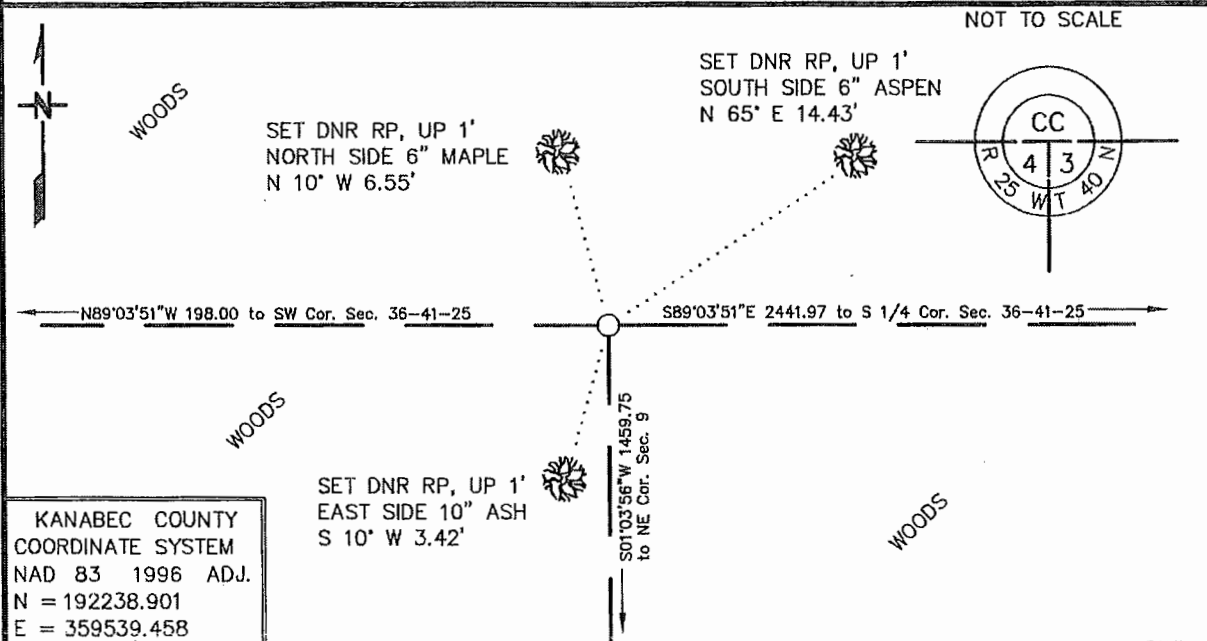
Index No. A-13

CERTIFICATE OF LOCATION OF GOVERNMENT CORNER

NORTHEAST Corner of Section 4, Township 40, Range 25
4TH Principal Meridian, State of Minnesota, County of KANABEC

At the corner location shown on the sketch:

- On _____ found a _____
DATE
- left monument as found, lowered monument, removed monument (explain)
- On 4/19/2017 Placed a 3/4" X 24" REBAR WITH CAP "MN DNR LS 47461"
DATE



Statement of evidence for this corner location is on back of this page.

AMD JUNE 2017
WMA09004

I hereby certify that this plan, specification, or report was prepared by me or under my direct supervision and that I am a duly Licensed Land Surveyor under the laws of the State of Minnesota.

SIGNATURE *Robert A. Langner* DATE 6/21/17 License Number 47461
Robert A. Langner

STATEMENT OF EVIDENCE**Northeast Corner of Section 4, Township 40 North, Range 25 West, 4th P.M.**

The Department of Natural Resources, Division of Lands and Minerals, contacted the following offices for information regarding this corner:

Kanabec County Recorder
Kanabec County Surveyor
Kanabec County Highway Department
Rud & Sons Land Surveying
Kroeschel Land Surveying
Bogart Peterson and Associates
Minnesota Historical Society
Minnesota Department of Transportation

1855

The US General Land Office field notes, on file with the Historical Society, indicate the east line of Section 4 intersects the 4th Correction Line 3 chains east of the southwest corner of Section 36, T41N, R25W. The point fell at the north edge of a swamp where a post and two tamarack bearing trees were placed to mark the corner.

2014

In February, the DNR Survey Crew retraced the east line of Sections 4, 9, 16 and 21, locating GLO calls along the lines and other evidence of the section lines. The survey crew located the edges of a swamp near the corner location. No other original evidence of the corner was found.

The Survey crew also searched for evidence east and west of the northeast corner of Section 4 along the 4th Correction Line. Fence line remains were recovered east of the corner.

2015

Mille Lacs County Surveyor, Warren Delles, retraced a portion of said correction line, the south line of Section 36, T41N, R25W. Mr. Delles located and filed Certificates of Location of Government Corner in Mille Lacs County on the South Quarter Corner (Doc. No. 1911) and Southwest Corner (Doc. No. 1908) of said Section 36.

2016

In June, a temporary position for this corner was computed on the 4th Correction Line, 3 chains (198') east of the Southwest Corner of Section 36, T41N, R25W per GLO measurement. The DNR Survey Crew made another search for the corner and accessories but found nothing. The computed position was found to be in harmony with the GLO notes. After analysis, the computed position was accepted as the corner location. A ¾ inch by 24 inch rebar with cap "MN DNR LS 47461" was set to mark the corner location.

For more information on our survey in this area, please contact the MN DNR, Division of Lands and Minerals, Survey Section, 1601 Minnesota Drive, Brainerd, MN 56401