

CERTIFICATE OF LOCATION OF GOVERNMENT CORNER

NORTHEAST Corner of Section 3, Township 40, Range 25, 4TH P.M.
 STATE OF MINNESOTA, County of KANABEC

At the corner location shown on the sketch:

FOUND THIS CORNER
 AND ESTABLISHED G.P.S. COORDINATES ON ITS LOCATION.

Kanabec County U.S. Survey Feet Coordinates
 NAD 1983, HARN 1996 Adjustment
 Obtained by RTK GPS Observation

Northing= 192156.91

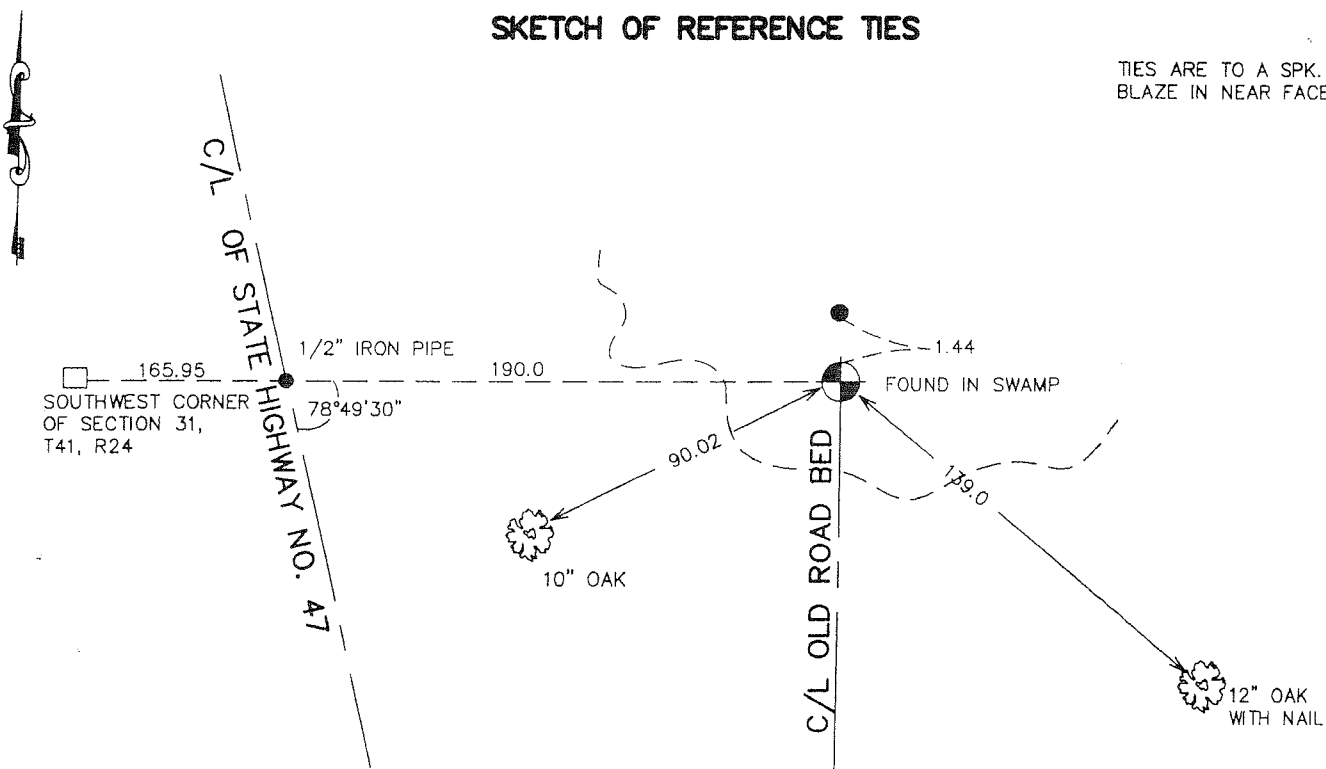
Easting= 364976.66

Note: NAD 1983, HARN 1996 Adjustment
 coordinates are NOT compatible with
 NAD 1983 coordinates

Note: 1 Meter=3937/1200 U.S. Survey Feet

SKETCH OF REFERENCE TIES

TIES ARE TO A SPK. IN
 BLAZE IN NEAR FACE



Statement of evidence relative to this corner location is on back of page.

I hereby certify that this document and the data contained herein was prepared by me or under my direct supervision.

Ernest Blud 10-12-2006
 Signature Date

Registration No. Miss No. 9808

- Land Surveyor, Professional Engineer
 County Surveyor, County Engineer

OFFICE OF THE COUNTY RECORDER

County of _____

I hereby certify that this document was filed in the County Recorder's office at _____ M. on the

_____ day of _____ A.D., 20____

County Recorder _____

BY _____ Deputy

DOCUMENT NO. _____

NORTHEAST CORNER SECTION 3, T40, R25

STATEMENT OF EVIDENCE

ALL OF THE ORIGINAL BEARING TREES ARE NOW GONE.

THE MINNESOTA DEPARTMENT OF TRANSPORTATION'S SURVEY RECORDS SHOW THIS CORNER AT THE INTERSECTIONS OF OLD ROADS SOUTH AND WEST AT 192 FEET EAST OF P.O.T. STATION 964+23.1.

ON JULY 22, 1981 M.B. RUDE FOUND A 1" IRON PIN AT 190.0 FEET EAST OF P.O.T. STATION 964+23.1.

ON JULY 28, 1981, M.B. RUDE SET A 4" BY 17" CAST IRON MONUMENT ON THE TOWNSHIP LINE 1.44 FEET SOUTH OF THE FOUND 1" IRON PIN.

IN FEBRUARY 2006 E.G. RUD AND SONS RAN A SURVEY ALONG THE CORRECTION LINE AND FOUND THIS C.I.M., VERIFIED TIES AND ESTABLISHED KANABEC COUNTY COORDINATES ON THIS POSITION.