

CERTIFICATE OF LOCATION OF GOVERNMENT CORNER

NORTH QUARTER Corner of Section 1, Township 40, Range 25, 4TH P.M.

STATE OF MINNESOTA, County of KANABEC

At the corner location shown on the sketch:

FOUND THIS CORNER
AND ESTABLISHED G.P.S. COORDINATES ON ITS LOCATION.

Kanabec County U.S. Survey Feet Coordinates
NAD 1983, HARN 1996 Adjustment
Obtained by RTK GPS Observation

Northing= 192179.58

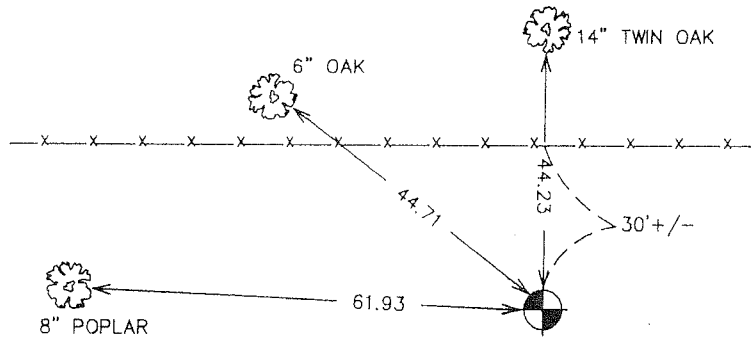
Easting= 372953.47

Note: NAD 1983, HARN 1996 Adjustment
coordinates are NOT compatible with
NAD 1983 coordinates

Note: 1 Meter=3937/1200 U.S. Survey Feet

SKETCH OF REFERENCE TIES

TIES ARE TO A SPK. IN
BLAZE IN NEAR FACE



Statement of evidence relative to this corner location is on back of page.

I hereby certify that this document and the data contained herein was prepared by me or under my direct supervision.

Ernst J. Rud
Signature

10-12-2006
Date

Registration No. Minn No 9808

- Land Surveyor, Professional Engineer
- County Surveyor, County Engineer

OFFICE OF THE COUNTY RECORDER

County of _____

I hereby certify that this document was filed in the County Recorder's office at _____ M. on the

_____ day of _____ A.D., 20__

County Recorder _____

BY _____ Deputy

DOCUMENT NO. _____

NORTH QUARTER CORNER SECTION 1, T40, R25

STATEMENT OF EVIDENCE

THIS CORNER WAS NOT SET ON THE ORIGINAL GOVERNMENT SURVEY AS IT IS ON A CORRECTION LINE.

M.B. RUDE SET THIS CORNER ON THE SOUTH LINE OF TOWNSHIP 41, RANGE 25 AND AT A PROPORTIONAL MEASUREMENT BETWEEN THE NORTHEAST CORNER AND THE NORTHWEST CORNER OF SECTION 1.

IN FEBRUARY 2006 E.G. RUD RAN A SURVEY ALONG THIS CORRECTION LINE, FOUND THIS MONUMENT AND ESTABLISHED KANABEC COUNTY COORDINATES ON THE MONUMENT.