

# CERTIFICATE OF LOCATION OF GOVERNMENT CORNER

NORTHEAST Corner of Section 1, Township 40, Range 25, 4TH P.M.

STATE OF MINNESOTA, County of KANABEC

At the corner location shown on the sketch:  
**SET THIS CORNER  
 AND ESTABLISHED G.P.S. COORDINATES ON ITS LOCATION.**

Kanabec County U.S. Survey Feet Coordinates  
 NAD 1983, HARN 1996 Adjustment  
 Obtained by RTK GPS Observation

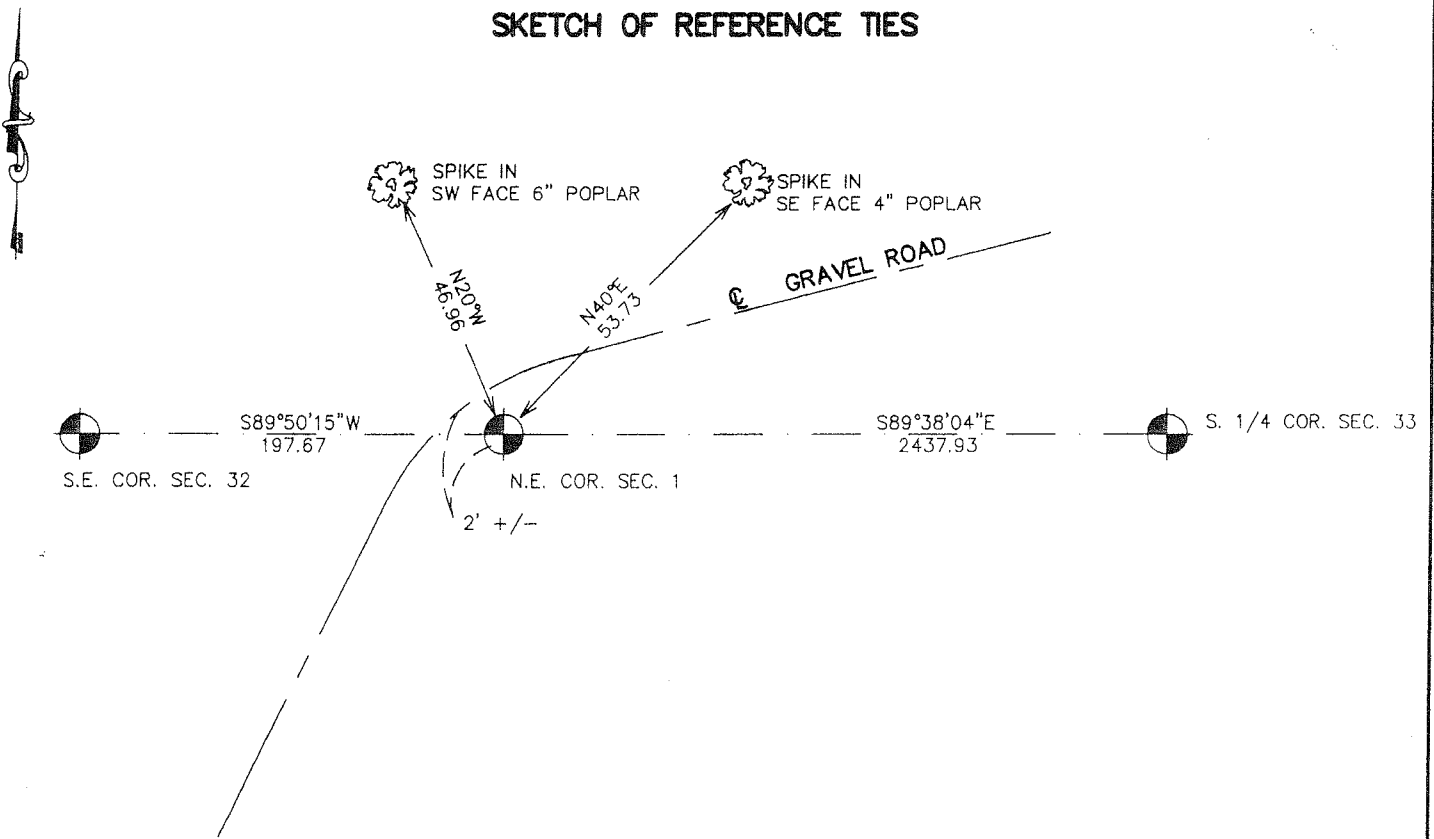
Northing= 192185.29

Easting= 375558.41

Note: NAD 1983, HARN 1996 Adjustment  
 coordinates are NOT compatible with  
 NAD 1983 coordinates

Note: 1 Meter=3937/1200 U.S. Survey Feet

### SKETCH OF REFERENCE TIES



Statement of evidence relative to this corner location is on back of page.

I hereby certify that this document and the data contained herein was prepared by me or under my direct supervision.

*Ernst Lund*  
 Signature

10-12-2006  
 Date

Registration No. Minn No 9808

- Land Surveyor,       Professional Engineer  
 County Surveyor,     County Engineer

### OFFICE OF THE COUNTY RECORDER

County of \_\_\_\_\_

I hereby certify that this document was filed in the County Recorder's office at \_\_\_\_\_ M. on the

\_\_\_\_\_ day of \_\_\_\_\_ A.D., 20\_\_

County Recorder \_\_\_\_\_

BY \_\_\_\_\_ Deputy

**DOCUMENT NO.** \_\_\_\_\_

# NORTHEAST CORNER SECTION 1, T40, R25

## STATEMENT OF EVIDENCE

ALL OF THE ORIGINAL BEARING TREES ARE NOW GONE.

THERE IS A TOWN ROAD ORDER SURVEYED BY CHARLES PETERSON IN 1916 FOR AN EAST-WEST ROAD DATED 1916, AND THAT THEY FOUND THE ORIGINAL BEARING TREE STUMP FOR THIS CORNER, BUT THE RECORD DOES NOT STATE WHAT WAS SET AT THIS CORNER.

IN JULY OF 1981, M.B. RUDE RAN A SURVEY ALONG THE TOWNSHIP LINE FROM THE SOUTHEAST CORNER OF SECTION 33 TO THE SOUTHWEST CORNER OF SECTION 31.

ON JULY 23, 1981, AN EXCAVATION WAS MADE WITH A D8 CAT. IT WAS 40 FEET LONG EAST-WEST AND 15 FEET WIDE NORTH-SOUTH IN THE OLD ROAD BE AT THE PROPORTIONAL DISTANCE LOCATION. NO EVIDENCE WAS FOUND IN THE EXCAVATION.

THIS CORNER WAS SET ON LINE BETWEEN THE SOUTH QUARTER CORNER CORNER OF AND THE SOUTHWEST CORNER OF SECTION 33, TOWNSHIP 41, RANGE 24, ON THE TOWNSHIP LINE AND AT A PROPORTIONAL MEASUREMENT.

IN FEBRUARY 2006 E.G. RUD AND SONS RAN A SURVEY ALONG THIS CORRECTION LINE. NO EVIDENCE OF THE C.I.M. SO THE CORNER WAS SET BY MATHEMATICAL INFORMATION OR M.B. RUDES SURVEY OF 1981. NEW TIES WERE TAKEN AND KANABEC COUNTY COORDINATES WERE ESTABLISHED USING G.P.S. EQUIPMENT.