

CERTIFICATE OF LOCATION OF GOVERNMENT CORNER

Northeast Corner of Section 12, Township 40, Range 25, 4TH P.M.

STATE OF MINNESOTA, County of Kanabec

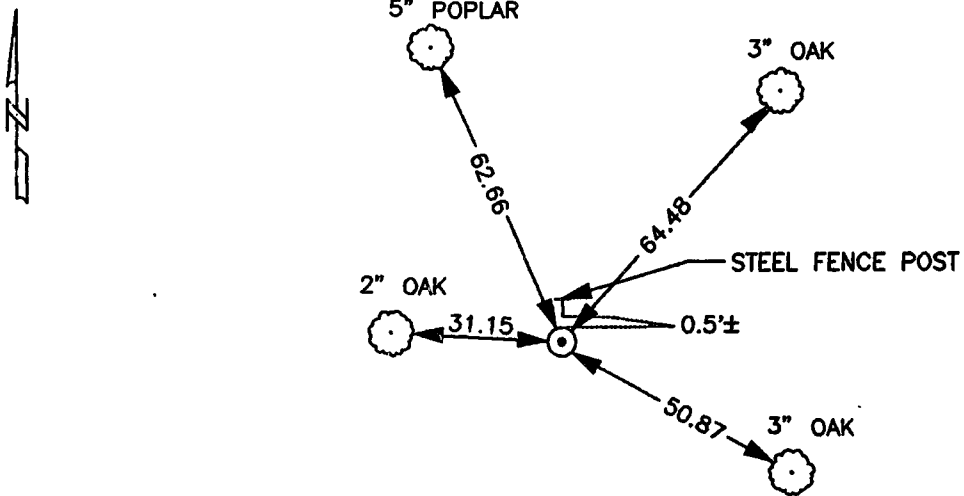
At the corner location shown on the sketch

[] On _____ found a _____
Date

[] left monument as found, [] lowered monument, [] removed monument (explain)

[X] On 12-8-98 placed a 7/8" X 36" Capped Rebar
Date

SKETCH OF REFERENCE TIES



TIES ARE TO A SPIKE IN BLAZE IN NEAR FACE

Statement of evidence relative to this corner location is on back of page.

I hereby certify that this document and the data contained herein was prepared by me or under my direct supervision.

[Signature] 12-14-98
Signature Date

Registration No. 8195

[] Land Surveyor, [] Professional Engineer
[X] County Surveyor, [] County Engineer

OFFICE OF THE COUNTY RECORDER

County of Kanabec

I hereby certify that this document was filed in the County Recorder's office at 2:00 P M. on the 22 day of December A.D., 19 98

County Recorder Rhonda A Olson
By _____ Deputy

DOCUMENT NO. _____

100/12

STATEMENT OF EVIDENCE:

All of the original bearing trees are now gone.

There is no Resurvey on file at the County Offices for this corner.

There are no lines of occupation near this corner

We set this corner on line and proportional measurement between the SE. corner of Sec. 12 and the NE. corner of Sec. 1.