

CERTIFICATE OF LOCATION OF GOVERNMENT CORNER

NORTHEAST Corner of Section 25, Township 40, Range 25, 4TH P.M.
 STATE OF MINNESOTA, County of KANABEC

At the corner location shown on the sketch:

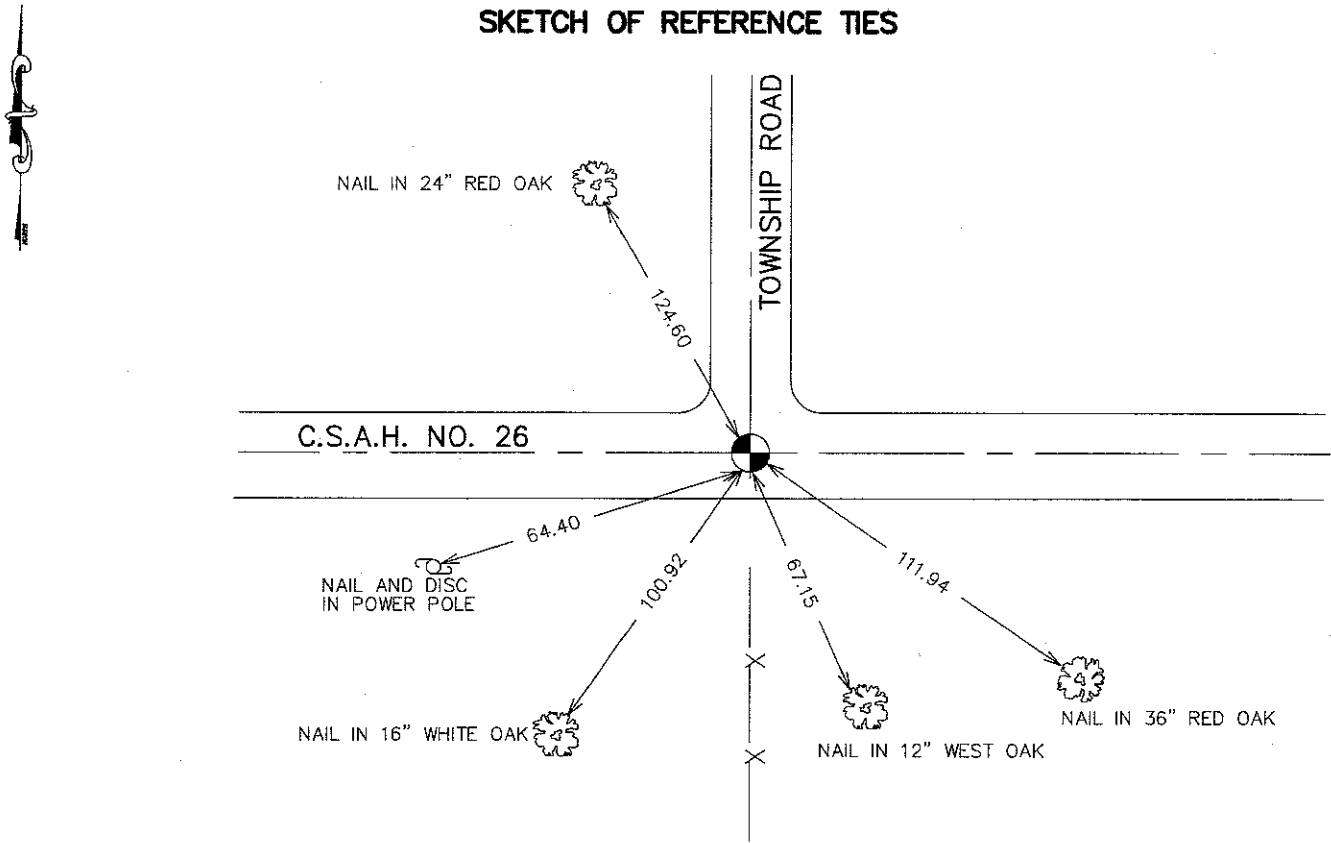
FOUND THIS MONUMENT
 AND ESTABLISHED KANABEC COUNTY COORDINATES ON ITS LOCATION.

Kanabec County U.S. Survey Feet Coordinates
 NAD 1983, HARN 1996 Adjustment
 Obtained by RTK GPS Observation

Northing= 174356.10
 Easting= 375444.42

Note: NAD 1983, HARN 1996 Adjustment
 coordinates are NOT compatible with
 NAD 1983 coordinates
 Note: 1 Meter=3937/1200 U.S. Survey Feet

SKETCH OF REFERENCE TIES



Statement of evidence relative to this corner location is on back of page.

I hereby certify that this document and the data contained herein was prepared by me or under my direct supervision.

Ernest Blud 11-25-07
Signature Date

Registration No. 9808
 Land Surveyor, Professional Engineer
 County Surveyor, County Engineer

OFFICE OF THE COUNTY RECORDER

County of _____
 I hereby certify that this document was filed in the County Recorder's office at _____ M. on the _____ day of _____ A.D., 20____
 County Recorder _____
 BY _____ Deputy

DOCUMENT NO. _____

NORTHEAST CORNER SECTION 25, T40, R25

STATEMENT OF EVIDENCE

M.B. RUDE MADE AN EXCAVATION WITH THE BACKHOE 8 FEET SQUARE, 2 FEET DEEP AT THE CENTERLINE OF THE INTERSECTION OF THE ROADS EAST-WEST AND NORTH AND FENCE LINE SOUTH. HE FOUND NO EVIDENCE OF THE CORNER. THE ROAD APPEARS TO HAVE BEEN CUT A FOOT OR TWO.

HE ACCEPTED THE D.N.R. LOCATION AS THE BEST AVAILABLE EVIDENCE OF THE ORIGINAL CORNER LOCATION.

HE SET A 4" BY 17" CAST ALUMINUM MONUMENT ON THE D.N.R. CORNER.

IN 1994 THE ROADWAY WAS REGRADED. THE COUNTY HIGHWAY DEPARTMENT LOCATED THIS CORNER MADE NEW REFERENCE TIES OUTSIDE OF THE CONSTRUCTION LIMITS AND RESET THE CORNER PRIOR TO REPAVING IN 1995.

IN OCTOBER 2007 E.G.RUD AND SONS FOUND THIS MONUMENT AND ESTABLISHED KANABEC COUNTY COORDINATES ON THIS MONUMENT.