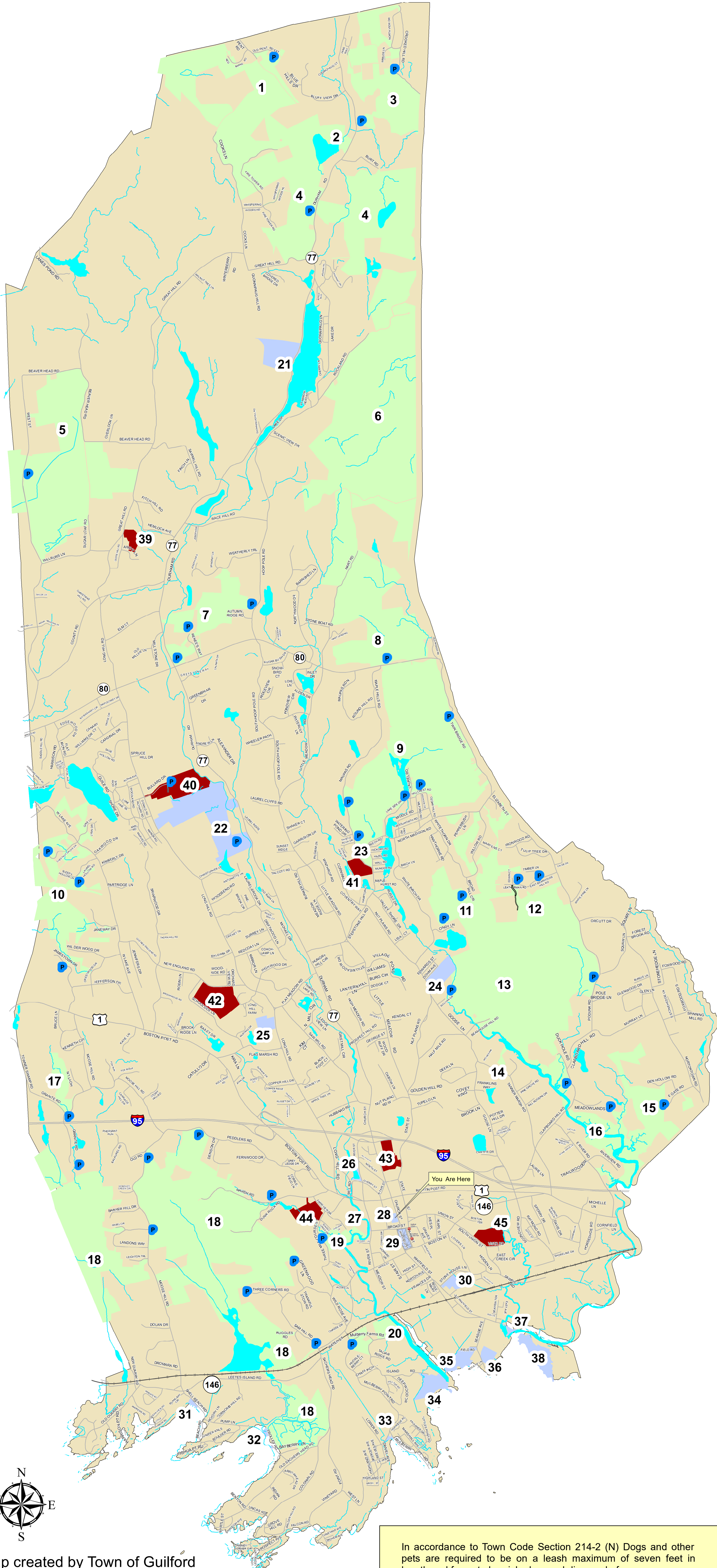


GUILFORD RECREATIONAL AREAS



Conservation Land with Trails

1. James Valley Preserve - 75 acre preserve owned and managed by the Town of Guilford with a section of the Lone Pine Trail.
2. Meyerhuber Preserve - 16 acre preserve owned and managed by the Guilford Land Conservation Trust and the Town of Guilford adjacent to Meyerhuber Pond with a section of the Lone Pine Trail.
3. Braemore Preserve - 95 acre preserve owned and managed by the Town of Guilford with 8 miles of trails including a section of the Lone Pine Trail.
4. Bluff Head & Northwoods - 630 acres owned and managed by the Guilford Land Conservation Trust adjacent to Regional Water Company land with 14 miles of trails containing a section of the Mattabesett Trail (New England Trail) with scenic overlook that provides views of Hartford and Long Island Sound. The east side of Route 77 contains trails through the Broomstick Ledges.
5. Sugarloaf Recreation Area - South Central Regional Water Authority property with 4.4 miles of trails. A SCRWA Pass Required (rwater.com)
6. Genesee Recreation Area - South Central Regional Water Authority property with a section of the Mattabesett Trail (New England Trail). A SCRWA Pass Required (rwater.com)
7. Dudley Barrows Woods - 120 acre preserve owned and managed by the Guilford Land Conservation Trust.
8. Cockaponset State Forest - State forest containing a section of the Mattabesett Trail (New England Trail).
9. Timberland Preserve - 600 acre preserve owned and managed by the Town of Guilford with 15 miles of trails.
10. Kampmeyer Preserve - 95 acre preserve with trails owned and managed by the Guilford Land Conservation Trust.
11. Nut Plains Woods - 57 acre preserve with hiking trails owned and managed by the Guilford Land Conservation Trust.
12. Eastwoods - 95 acre preserve with hiking trails owned and managed by the Guilford Land Conservation Trust.
13. East River Preserve - 583 acre preserve owned and managed by the Town of Guilford with 7.6 miles of trails including a section of the Menunkatuck trail (New England Trail).
14. Tanner Marsh Brook - 5 acre parcel with hiking trails to the East River owned and managed by the Guilford Land Conservation Trust.
15. East River Woodlands - 83 acre preserve with hiking trails owned and managed by the Guilford Land Conservation Trust.
16. Salt Meadow Sanctuary - 111 acre preserve with a one-mile loop trail owned and managed by Audubon Connecticut.
17. Big Maple - 31 acre preserve with hiking trails owned and managed by the Guilford Land Conservation Trust.
18. Westwoods - 1,200 acre woodlands comprised of land owned by Guilford Land Conservation Trust and State of Connecticut with 39 miles of trails.
19. Spencer Creek - 11 acre preserve owned and managed by the Guilford Land Conservation Trust and bordered by the West River.
20. Jared Eliot Preserve - 36 acre preserve with limited trails located along the West River. The property is owned and managed by the Guilford Land Conservation Trust.

Maps available at:
<http://www.ci.guilford.ct.us/boards/conservation-commission>
<https://guilfordlandtrust.org>

Recreation Properties

21. Lake Quonnipaug - 41 acre park with bathrooms, canoeing, kayaking, paddle boats, fishing, hiking, picnic area and swimming. Access fee\$
22. Bittner Park - 136 acre park with bathrooms, disc golf course, basketball courts, pickleball, playground, skate park, sports fields, trails for cross country skiing, hiking, horseback riding, mountain bikes, and fishing.
23. Guilford Lakes Golf Course - 9 hole golf course with access fee\$.
24. Nut Plains Park - 23 acre park with dog parks, lacrosse fields, and trail.
25. Long Hill Park - 10 acre park with sports fields.
26. Mill Pond - 1 acre park with picnic area and pond for fishing and ice skating.
27. Olmsted Outlook - 1 acre riverside park with canoe/kayak access.
28. Guilford Community Center - Park & Recreation office, beach passes, senior programs, meeting rooms, and bathrooms.
29. Guilford Green - 7.7 acre green with park benches.
30. Rollwood Park - 1 acre park with picnic tables.
31. Shell Beach - 1 acre shoreline park. Water views, shell fishing by permit.
32. Trolley Road - Shoreline park. Water views, canoe/kayak access, and shell fishing by permit.
33. Daniel Avenue Beach - 3/4 acre beach with limited parking. Sun bathing & no life guards. Shell fishing by permit.
34. Chaffinch Island Park - 22 acre park for fishing and picnics. Has picnic tables and grills.
35. Chittenden Park - 14 acre coastal park with sports fields, bocce courts, boardwalk to Long Island Sound. Southern gateway to National New England Trail.
36. Jacobs Beach - 25 acre shoreline park with beach, bathhouse, picnic shelter, half basketball courts, playground, volleyball court, and kayak racks for rent. Access fee\$
37. Guilford Marina - 2.4 acre marina. Coastal views and fishing. Fee for boat ramp.
38. Grass Island - 30 acre passive recreational area. Coastal walk to shack.

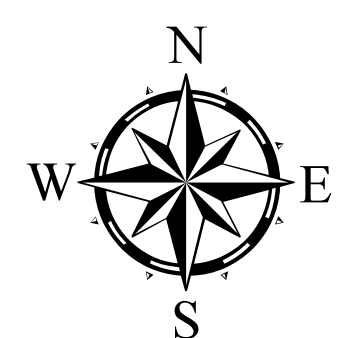
Additional information regarding the parks can be viewed at <http://www.guilfordparkrec.com>

School Properties

39. Melissa Jones Elementary School - Playground, Little League field, basketball hoop.
40. Abraham Baldwin Middle School - Little League fields, soccer, lacrosse practice area, sledding hill, access to Bittner Trails.
41. Guilford Lakes School - Little League field, soccer field, tennis/pickleball courts, playground.
42. Guilford High School - Baseball, softball, soccer, lacrosse, football, field hockey, tennis, track.
43. Elisabeth C. Adams Middle School - Basketball, Little League fields, soccer, field hockey, tennis/pickleball courts.
44. A.W. Cox Elementary School - Little League, soccer, lacrosse, basketball, playgrounds.
45. Calvin Leete Elementary School - Little League fields, soccer, playground.

(Access to School Properties is restricted during school hours)

In accordance to Town Code Section 214-2 (N) Dogs and other pets are required to be on a leash maximum of seven feet in length and feces to be picked up and disposed of.



Map created by Town of Guilford
 Natural Resources Department
 April 2, 2021

Map sponsored through the efforts of the Guilford Preservation Alliance