



Connecting Active Communities Coalition

Amberley Village • Arlington Heights • Blue Ash • Glendale • Evendale
Forest Park • Lincoln Heights • Lockland • Montgomery
Reading • Sharonville • Woodlawn • Wyoming

Partner Organizations

Great Parks • Green Umbrella/Tri-State Trails • HAMCO Planning + Development
HAMCO Public Health/WeTHRIVE! • Mill Creek Alliance
Mill Creek Valley Conservancy District • ODOT • OKI • University of Cincinnati

MISSION STATEMENT

Adopted February 3, 2010; Revised May 25, 2011; April 2, 2014

Our mission is to coordinate and integrate a multijurisdictional approach to active transportation initiatives that considers all ages and abilities in an effort to improve community outcomes (health, recreation, safety, environmental and economic development) through collaborative efforts in the Engineering, Education, Encouragement, Enforcement and Evaluation of bicycle, pedestrian, waterway and other non-motorized, interconnected transportation plans, projects, programs and policies of the member communities and beyond.



WATER QUALITY & THE ENVIRONMENT

Since 2013, the Mill Creek Alliance has collected data throughout the 166 square mile Mill Creek Watershed. Dedicated citizen scientists and college interns work in the field and lab to analyze water samples for turbidity, nitrates, total phosphorus, conductivity, pH, E.coli /fecal coliforms, temperature, optical brighteners, & Chlorophyll a. The data are presented annually at our State of the Mill Creek Address and are available on our website.

Our data meet the standards of Ohio Credible Data Program. They document water quality trends and supplement data collected by government agencies. Our program not only aides in watershed planning efforts, but reports water quality problems to municipalities and local sewer districts for corrective action. With data we can evaluate the effectiveness of restoration projects, and provide a rich information source to educate watershed stakeholders about the condition of the Mill Creek.

2022 IMPACT

- Raised over \$2 million in funding for stream restoration projects, including the mitigation of 3 low head dams and the restoration of 4,000 feet of stream bank
- Introduced 500+ students from local school to the Mill Creek: its biology, chemistry, ecology, engineering, and history
- Guided 200+ new Mill Creek paddlers including council members, city officials, water quality scientists, students, and local residents.
- Engaged volunteers in over 3,450 hours of water quality monitoring, education programs, and restoration efforts with an estimated value of \$77,300.



GET IN TOUCH WITH US!



513-563-8800



info@themillcreekalliance.org



www.themillcreekalliance.org



[@millcreekalliance](https://www.instagram.com/millcreekalliance)



1223 Jefferson Avenue
Cincinnati, OH 45215

Because CLEAN WATER MATTERS!



We champion the resurgence of the Mill Creek Watershed as a natural and community asset. We envision the watershed as a healthy ecosystem where people and communities can thrive. Our programs and projects strive to connect people with the Mill Creek, improve the Mill Creek, be a policy voice for the Mill Creek, and tell a new Mill Creek story.

Our work focuses on:

**RESTORATION
EDUCATION
RECREATION**





RESTORATION

We help communities envision the Mill Creek as an asset rather than a liability. We assemble teams of technical expertise in environmental engineering, ecology, construction, and landscaping, and acquire funding through public and private sources. Through our work we connect communities to one another, the Mill Creek, and the natural environment.

STREAMBANK REMEDIATION



Mitigate flooding and pollution and improve water and habitat quality using green infrastructure, natural stream channel design, low head dam mitigation, and other techniques that promote climate resiliency, improved ecosystems, and benefit all neighborhoods.



WATERSHED PLANNING

Participate in local governments' planning and deliberations about Mill Creek. Convene local governments within the watershed to prioritize and coordinate efforts.



INVASIVE SPECIES REMOVAL & NATIVE PLANT INSTALLATION

Create volunteer opportunities that foster public "ownership" of the Mill Creek while serving to attend to the removal of plants that invade the ecosystem and replace them with native plants that support habitat.



TRAIL DEVELOPMENT

Leverage the Mill Creek Greenway and Triangle Trails for recreational and active transportation, and the Mill Creek Water Trail for paddling activities

EDUCATION

Engaging the next generation of environmental stewards who will take future responsibility for assuring the health of the watershed is critical to success. We provide environmental education in both school and informal settings. Our programs are hands on, place based, and include both classroom and field experiences.



SCHOOL PROGRAMS

Provide a variety of water education field trips and classroom programs aligned to Ohio and NGS standards for 7-12 grade sciences. We engage students with the Earth by exploring the Mill Creek Watershed with hands-on field science.



SERVICE LEARNING OPPORTUNITIES

Offer students, young adults, and corporate groups an opportunity to give back to the community by engaging in 1 day Service Learning activities at restoration sites throughout the watershed.



SUMMER & INFORMAL EDUCATION

Teacher Training, Youth Fishing Programs, Guided Hikes, and Community Enrichment Programs are all possible to coordinate for the summer season.



INTERNSHIPS & WATER QUALITY MONITORING

College students get field experience in environmental restoration, water quality science, or non-profit management.

RECREATION

Cincinnati is lucky to have an urban stream. It is a rich part of our community history. While the Mill Creek was neglected for many years, Mill Creek Alliance is working tirelessly to achieve cleaner water and bring life back to the stream in the form of HUMANS! The goal is to provide quality, equitable, outdoor experiences for all.



MCYC URBAN STREAM ADVENTURES

Organizes public stream adventures, pop-up canoe paddling experiences, and unique paddling experience for citizens who want to learn about the creek. Trips are lead by the Mill Creek Yacht Club, a group of volunteers who are expert guides and knowledgeable docents who make every trip worthwhile.



OUTDOOR ACTIVITIES

Promote the Mill Creek as a place for people, with access to water, parks, walk and bike trails, boating, fishing, birding, services, etc. We organize activities that bring people to the creek.



WATER TRAIL DEVELOPMENT

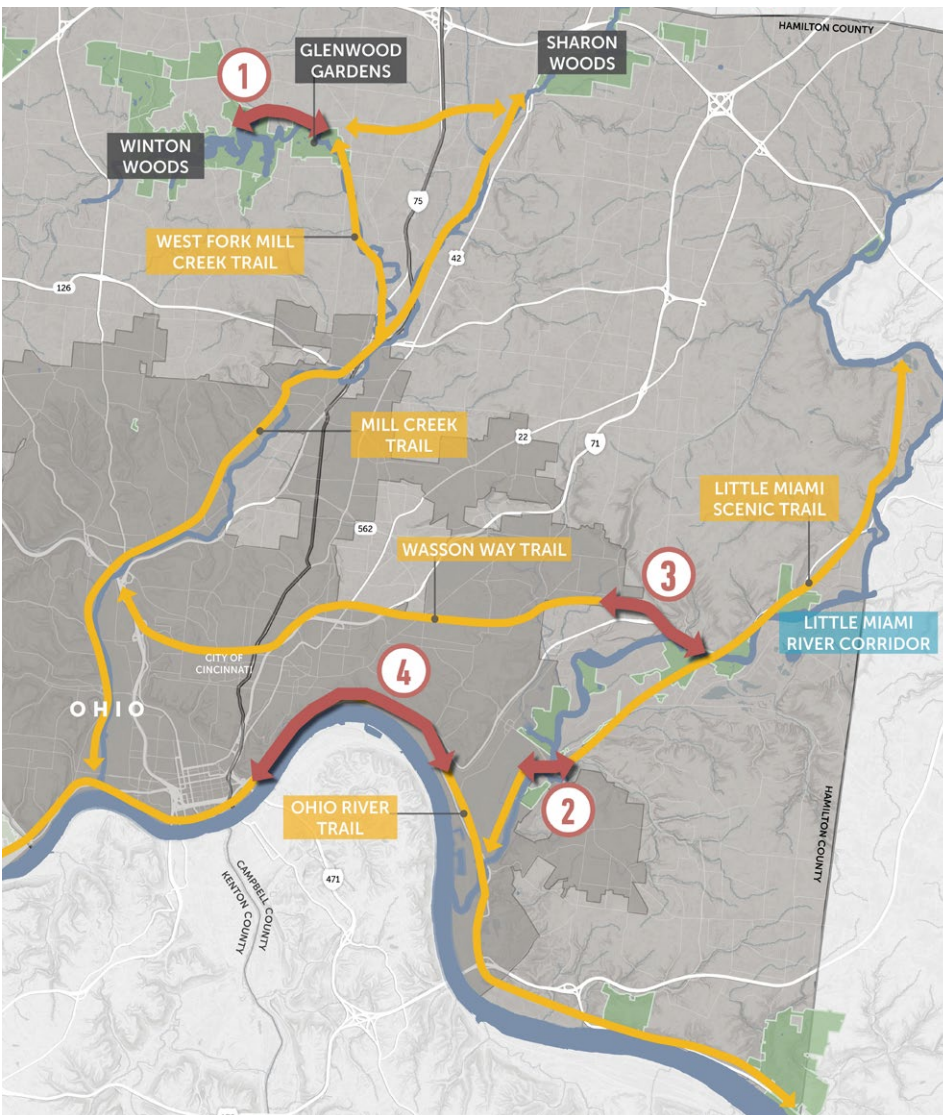
Create public access and safe water trails. Our Mill Creek Yacht Club is the eyes and ears of the creek. They know its opportunities and challenges better than anyone.



CLEANUPS

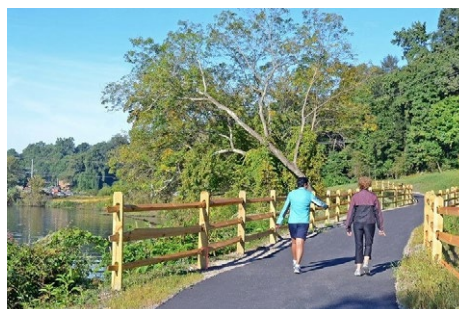
Engage the community in cleanups that help restore the stream to its natural state. The Mill Creek is an urban stream and pollution is an ongoing problem.

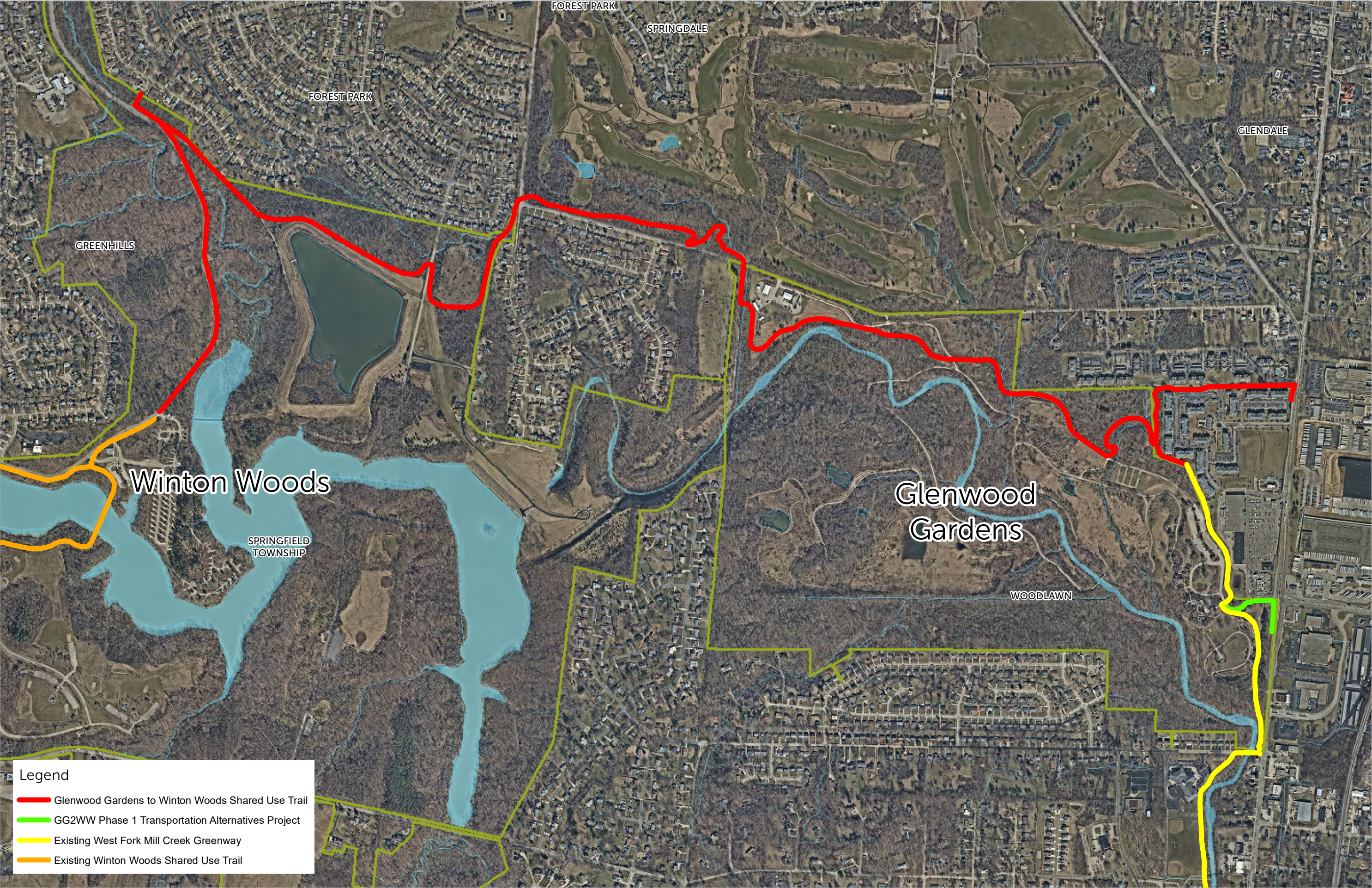
CREATING NEW REGIONAL TRAIL LINKAGES



Great Parks of Hamilton County has long been a partner and champion of developing regional trail systems and connections between parks, communities, and destinations. These paved, off-road trails expand safe, accessible and enjoyable opportunities for people to reach their parks by walking and biking. Great Parks' focus on regional trails extends throughout the entire tristate region, including trails along the Mill Creek, Great Miami, Little Miami, and Ohio Rivers. In this plan, four regional trail segments have been identified as priorities for Great Parks:

- ①. The Glenwood Gardens to Winton Woods Trail will span **3.6 miles** and **connect two Great Parks** that are adjacent to one another.
- ②. The Beechmont Bridge Connection is **currently under construction**. This trail will link the Little Miami Scenic Trail to the Otto Armleder, Lunken Loop, and Ohio River Trails.
- ③. The **1.6-mile Columbia Connector Trail** will ultimately tie the Little Miami Scenic Trail to other segments of the 34-mile CROWN regional trail loop, including the Murray Path and Wason Way.
- ④. The Ohio River Trail – The Oasis Corridor is another regional trail that is currently in the planning stages. This trail connection **from the Lunken Loop Trail to downtown Cincinnati** is a critical segment of the Ohio River Trail, which will eventually stretch from one end of the county to the other.







Mill Creek Triangle Feasibility Study

Regional Trails Plan

- Existing Trail
- Existing Bike Lane
- Existing Shared Road
- Planned Trail

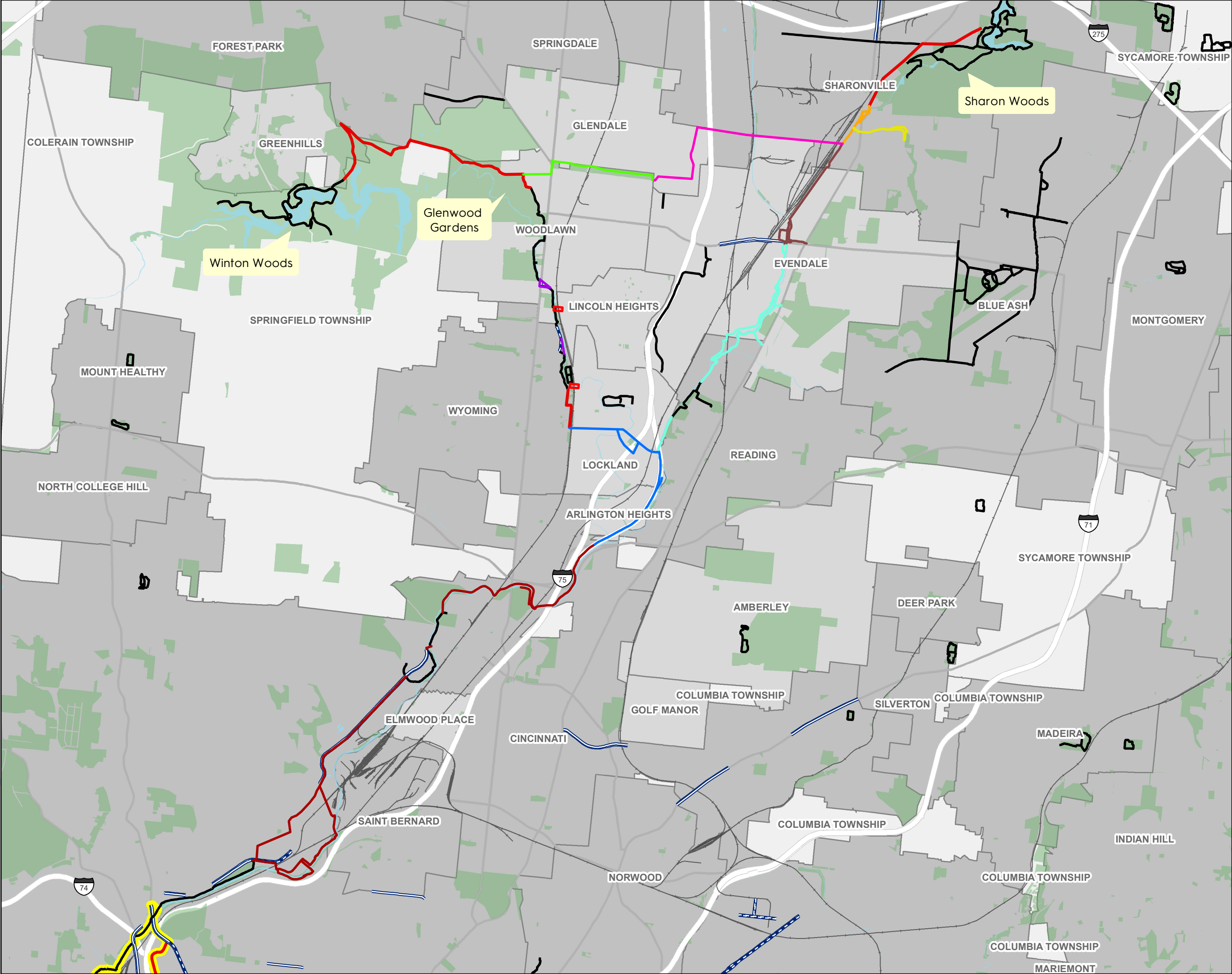
CROWN

- Proposed CROWN Loop

MCT Phases

- Phase 1A
- Phase 1B
- Phase 1C
- Phase 2
- Phase 3
- Phase 4A
- Phase 4B
- Phase 5
- Phase 6A*
- Phase 6B*

*See Phase 6 map for additional details



Tri-State Trails
Mill Creek Triangle - Feasibility Study
Proposed Scope of Work - Revised February 17, 2023

This Scope of Work is loosely based on the ODOT PDP. The intent is to perform limited analysis that is not the full ODOT PDP, but will produce information that could be incorporated into a full ODOT PDP in the future if needed.
Overall the goal is to get to conceptual layouts (since the route has loosely been determined) and enough preliminary engineering to get a good planning level cost estimate that can be moved forward into applications for grant funding for construction.

Task Description	Feasibility Study (Phases 1C, 3, 4B, 5, 6B)	Concept Planning (Phases 1A, 1B, 2, 4A, 6A)	Notes	TST Task	Consultant Task
	Feasibility Study includes concept-level graphics and estimates	Concept planning includes hard-lined CAD drawings and estimates of a higher level of detail.			
1.2.A - Define Study Area and Logical Termini	X	X	To be defined by TST.	X	
1.2.B - Conduct Field Review (walk through)	X	X	ODOT to be invited.	X	X
1.3.H - Develop Purpose & Need	X	X	To be drafted by TST: •Define Target User Group and Identify desired bikeway type. •Identify underserved populations and perform an equity analysis. •Perform a bicycle and pedestrian needs analysis.	X	
1.4.A - Develop Public Involvement Plan	X	X	Public input to be coordinated by TST. Engineering consultant should plan to attend public meetings.	X	
2.1.A.E - Field Survey and Aerial Mapping - Planning Level	Use GIS Data Only	X	GIS preliminary alignments provided by TST includes asset mapping to understand connectivity with transit stops, State and US Bike Routes, population centers, business districts, schools and parks. GIS preliminary alignment provided by TST to be reviewed and refined by engineering consultant.	X	X
2.1.A.G - Preliminary Alignment and Profile	Conceptual Alignment Only	X	Engineering consultant to identify preliminary alignment based on sound engineering judgment. Limit alternatives analysis to critical locations. The corridor for this project is already mostly determined. Provide a GIS Shapefile of the recommended alignment.	X	X
2.1.A.H - Cross-Sections	Less detailed, fewer locations than concept planning study	At Critical Locations	Engineering consultant to develop critical cross sections to establish worst case construction limits.		X
2.1.A.K - Prepare Feasibility Study Report	X	X		X	
2.1.A.J - Stakeholder Public Involvement	X	X		X	
2.2.B - Cultural Resources Scoping Request Form	Red Flag Analysis Only	X			X
2.2.D - Regulated Materials Review Screening Form	Red Flag Analysis Only	X			X
2.2.I - Phase I Cultural Resource History/-Architecture Survey	Red Flag Analysis Only	X			X
2.3.B.A - Design Criteria	Use ODOT Multi-Modal Design Guide and Active Transportation Plan Development Guide	Use ODOT Multi-Modal Design Guide and Active Transportation Plan Development Guide		X	
2.3.B.B - Conceptual Typical Sections	X	X			X
2.3.C.D - Perform preliminary hydraulic analysis for culverts and bridges	Estimate Number of Crossings and Include Allowance in Cost Opinion	Identify Locations and Include Allowance in Cost Opinion			X
2.3.C.E- Conceptual BMP	Include Allowance in Cost Opinion	Conceptual Location & Cost			X
2.3.C.F - Estimate impact to wetlands, streams, & other regulated waters of the US and potential wetland mitigation	Red Flag Analysis Only	Identify Potential Locations and Include Allowance in Cost Opinion			X
2.3.G.A - Utility Coordination and Documentation	Red Flag Analysis Only	Identify Potential Locations and Include Allowance in Cost Opinion			X
2.3.H.C - Determine potential locations for retaining walls	Identify Potential Locations and Include Allowance in Cost Opinion	Rough Calculation of Quantities and Costs			X
2.4.A-B-C - Cost Opinion	X	X	•Include probable consulting costs. Develop two alternates, ODOT process and locally funded. •Estimate cost for ROW and reimbursable utilities and utilize ODOT inflation and contingency guidelines. •Review ODOT's geotechnical manual and include cost estimate to obtain soil borings for future phase of development.		X

2.5.D.A - Bridge Structure Type Study	Identify Bridge Locations & Use Rough Square-Foot Estimate of Cost	Preliminary Analysis of Structure Types and Costs	Not a full ODOT Structure Type study, but develop preliminary information that could be incorporated into a structure type study in the future.		X
3.1.A – Phase I Cultural Archeological-	Red Flag Analysis Only	X			X
3.1.B – Phase II Cultural Resource History/-Architecture Survey-	Red Flag Analysis Only	X			X
3.1.D – Regulated Materials Review Assessment-	Red Flag Analysis Only	X			X
3.7.A – Mitigation for Cultural Resources –	Red Flag Analysis Only	X	Develop mitigation measures through the Section-106 consultation process		X

Notes:

1. ODOT prequalification required. See list of prequalifications needed below.

2. Tri-State Trails shall retain ownership of all documents, work product, and CAD files after project completion, and shall agree to hold Consultant harmless from claims related to the use of information developed in subsequent stages of project development if such future stages are performed by another Consultant.

ODOT prequalifications required:

DESIGN SERVICES:

Bicycle Facilities & Enhancement Design;
 Non-Complex Roadway Design;
 Limited Right of Way Plan Development;
 Complex Right of Way Plan Development;
 Subsurface Utility Location Services;
 Level 1 Bridge Design;

ENVIRONMENTAL SERVICES:

Environmental Document Preparation - EA/EIS;
 Environmental Document Preparation - CE;
 Environmental Document Preparation - Section 4(f);
 Ecological Surveys;
 Stream and Wetland Mitigation;
 Waterway Permits;

NEEDED FOR FUTURE PHASES OF DESIGN:

Geotechnical Engineering Services;
 Geotechnical Testing Laboratory;
 Geotechnical Field Exploration Services;



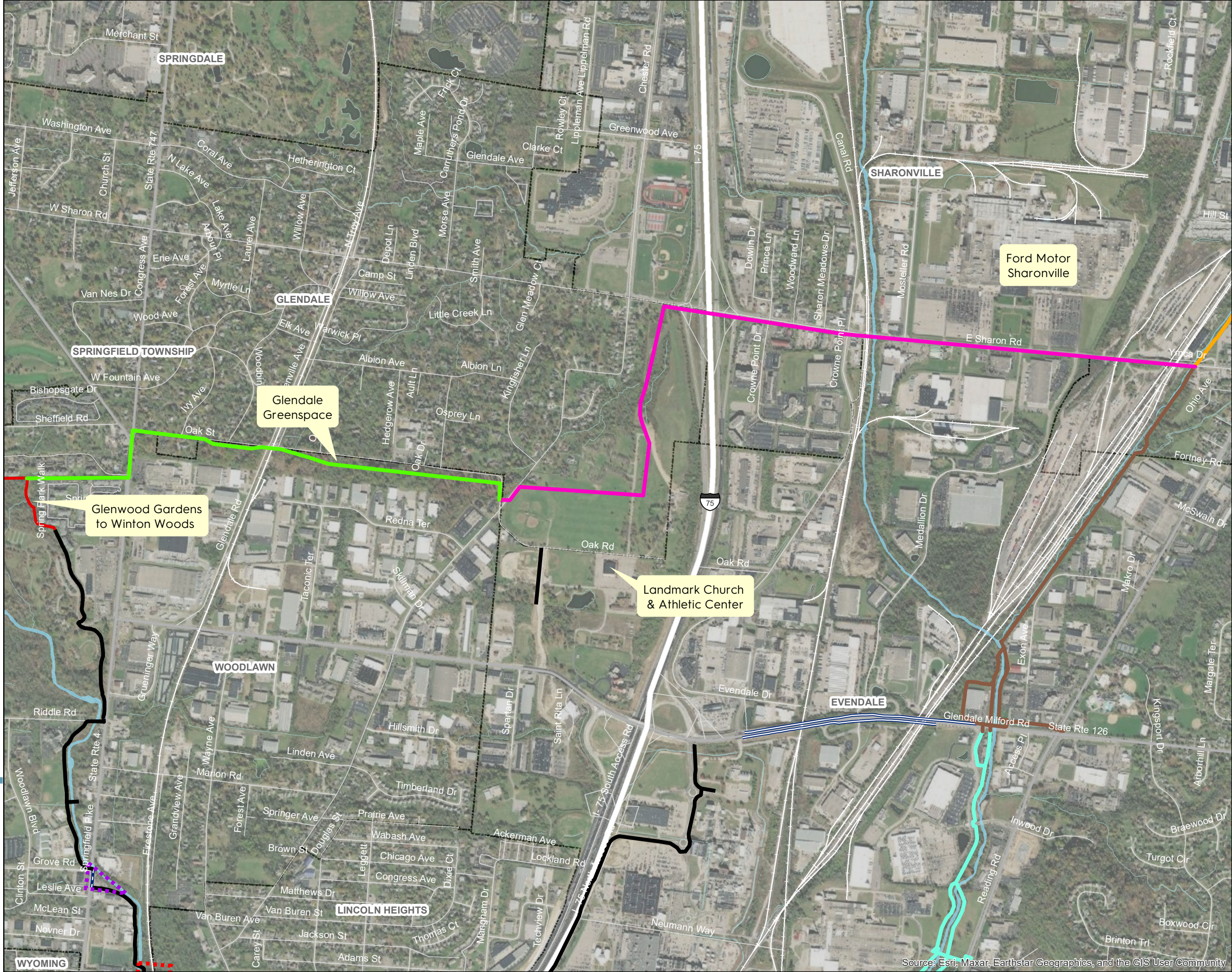
Mill Creek Triangle Feasibility Study: Phase 4

Regional Trails Plan

- Existing Trail
- Existing Bike Lane
- Existing Shared Road
- Planned Trail

MCT Phases

- Phase 1A
- Phase 1B
- Phase 2
- Phase 4A
- Phase 4B
- Phase 6A
- Phase 6B





PO Box 14270
Cincinnati, OH 45250

513.541.1538
www.tristatetrails.org

March 2, 2023

Mr. David Lumsden
Village of Glendale
20 Village Square
Glendale, OH 45246

Dear Mr. Lumsden:

Tri-State Trails, Mill Creek Alliance, Great Parks of Hamilton County, and several local governments involved in the Connecting Active Communities Coalition have been convening for nearly seven years through the Mill Creek Collaborative to advance the vision for the Mill Creek Triangle Trail. Following Great Parks' recent acquisition of a former rail line along Sharon Creek in Sharonville and Evendale, our team is ready to organize a multi-jurisdictional feasibility study to formalize the vision for the Mill Creek Triangle Trail. The objectives of this study are as follows:

- Explore trail alignment options and recommend a preferred route;
- Partner with a qualified engineering firm to develop cost estimates for the preferred route and alternatives;
- Conduct public engagement for the Mill Creek Triangle Trail; and
- Position trail segments to apply for federal and state grant funding for construction.

Because your community is along the proposed route for the Mill Creek Triangle Trail, we invite your organization to contribute financially to support the feasibility study. Enclosed are some additional materials about the study, including the scope of work, trail maps, and our collaborative fundraising strategy. Phase 4 of the feasibility study will directly benefit the Village of Glendale by exploring a proposed path to connect Glenwood Gardens to Sharon Woods. To explore this route, we respectfully request \$7,500 from the Village of Glendale to support the feasibility study.

Our team would welcome the opportunity to present on this matter to your council or decision making body. Please feel free to contact me with any questions or to discuss next steps.

Respectfully,

Wade Johnston, AICP
Executive Director
Tri-State Trails
wade@tristatetrails.org

Mill Creek Triangle Trail
Proposed Fundraising Strategy DRAFT 02/27/2023

Organization	Requested	Committed	Benefit
Great Parks of Hamilton County	\$ 30,000	\$ 30,000	Entire study
Hamilton County TID	\$ 30,000		Entire study
Hamilton County Regional Planning Commission	\$ 10,000		Entire study
Hamilton County Public Health	\$ 10,000		Entire study
Mill Creek Valley Conservancy District	\$ 2,500		Entire study
City of Sharonville	\$ 20,000		Phase 1 detailed engineering / Phase 4 feasibility study
Village of Evendale	\$ 20,000		Phase 1/2 detailed engineering
City of Reading	\$ 5,000		Phase 2 detailed engineering
Village of Arlington Heights	\$ 2,500		Phase 3 feasibility study
Village of Lockland	\$ 2,500		Phase 3 feasibility study
Village of Glendale	\$ 7,500		Phase 4 feasibility study
City of Wyoming	\$ 7,500		Phase 6 feasibility study
Village of Woodlawn	\$ 7,500		Phase 6 feasibility study
Village of Lincoln Heights	\$ 2,500		Phase 6 feasibility study
GE / GE Foundation	\$ 5,000		Phase 2 feasibility study
The Port	\$ 10,000		Phase 2 feasibility study
Wyoming Community Foundation	\$ 5,000		Phase 6 feasibility study
Wyoming Cycling Foundation	\$ 2,500		Phase 6 feasibility study
Alloy Economic Development	\$ 10,000		Phase 3/4 feasibility study
First Suburbs Consortium	\$ 5,000		adjacent benefit
Springfield Township*	\$ 2,500		adjacent benefit
City of Springdale*	\$ 2,500		adjacent benefit
Village of Greenhills*	\$ 2,500		adjacent benefit
City of Forest Park*	\$ 2,500		adjacent benefit
TOTAL	\$ 205,000	\$ 30,000	

This is a draft for discussion purposes. Other potential asks could include chambers of commerce, commercial property owners/developers, and health institutions.