

## RadonLevel

pCi/L

- ≤ 1.0
- ≤ 2.0
- ≤ 4.0
- ≤ 6.0
- ≤ 8.0
- ≤ 10.0
- ≤ 90.0

\*This map depicts estimated levels of radon in Livingston County. Results from the homes tested using Livingston County Health Department (LCHD) radon test kits, produced this map. Therefore, this map is not actual representation of radon levels for all homes in Livingston County. For example, green areas do not ensure safe radon levels. LCHD recommends that all homes are tested to determine the radon level. The US. Environmental Protection Agency (EPA) recommends a radon mitigation system to be installed in homes with radon levels > 4 pCi/L. For questions, call LCHD 517-546-9858. Printed: November 07, 2022

3 1.5 0 3 Miles



Livingston County, Michigan  
Information Technology Department  
G.I.S. Division 517.548.3230

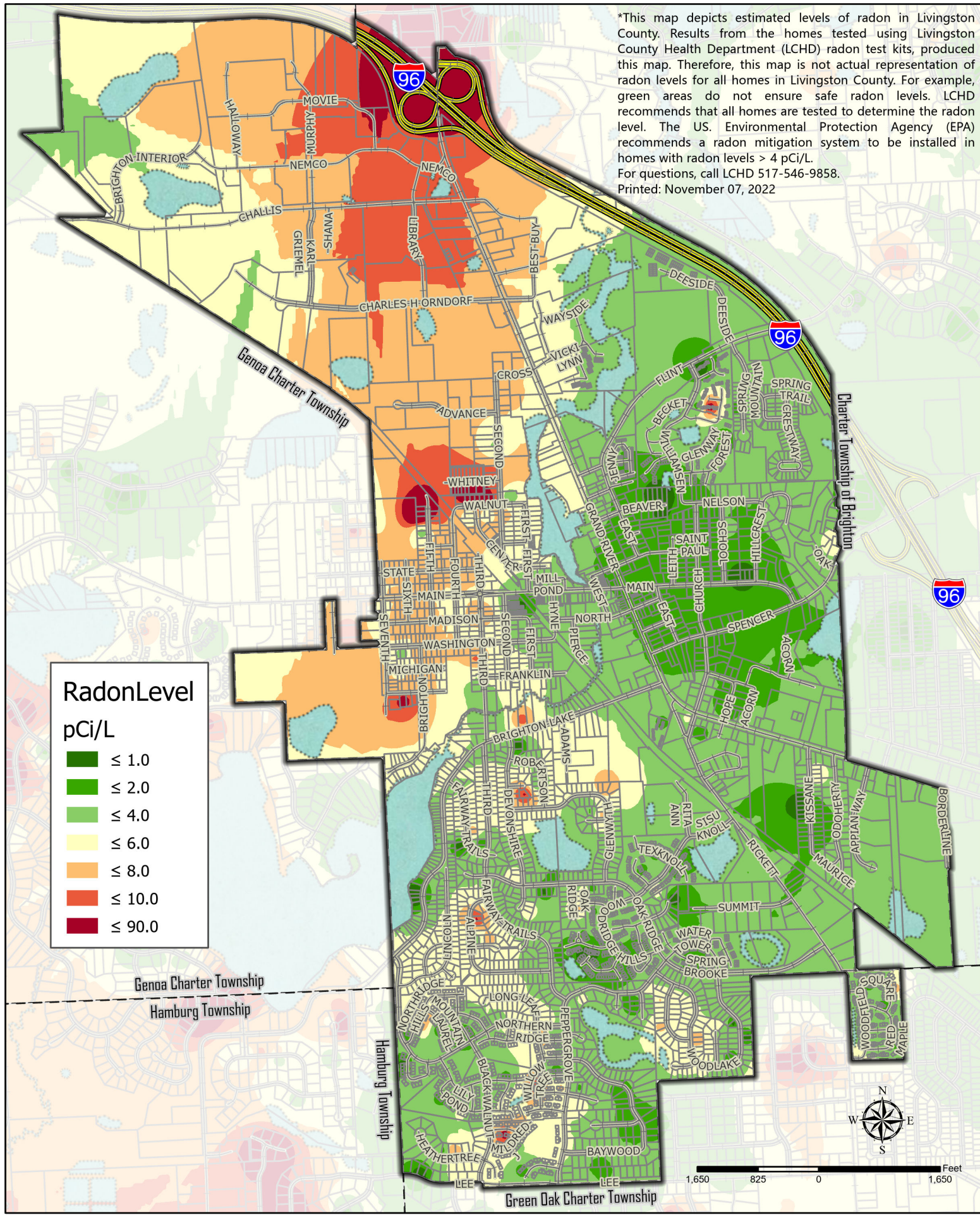
\*Estimated Radon Levels in Livingston County







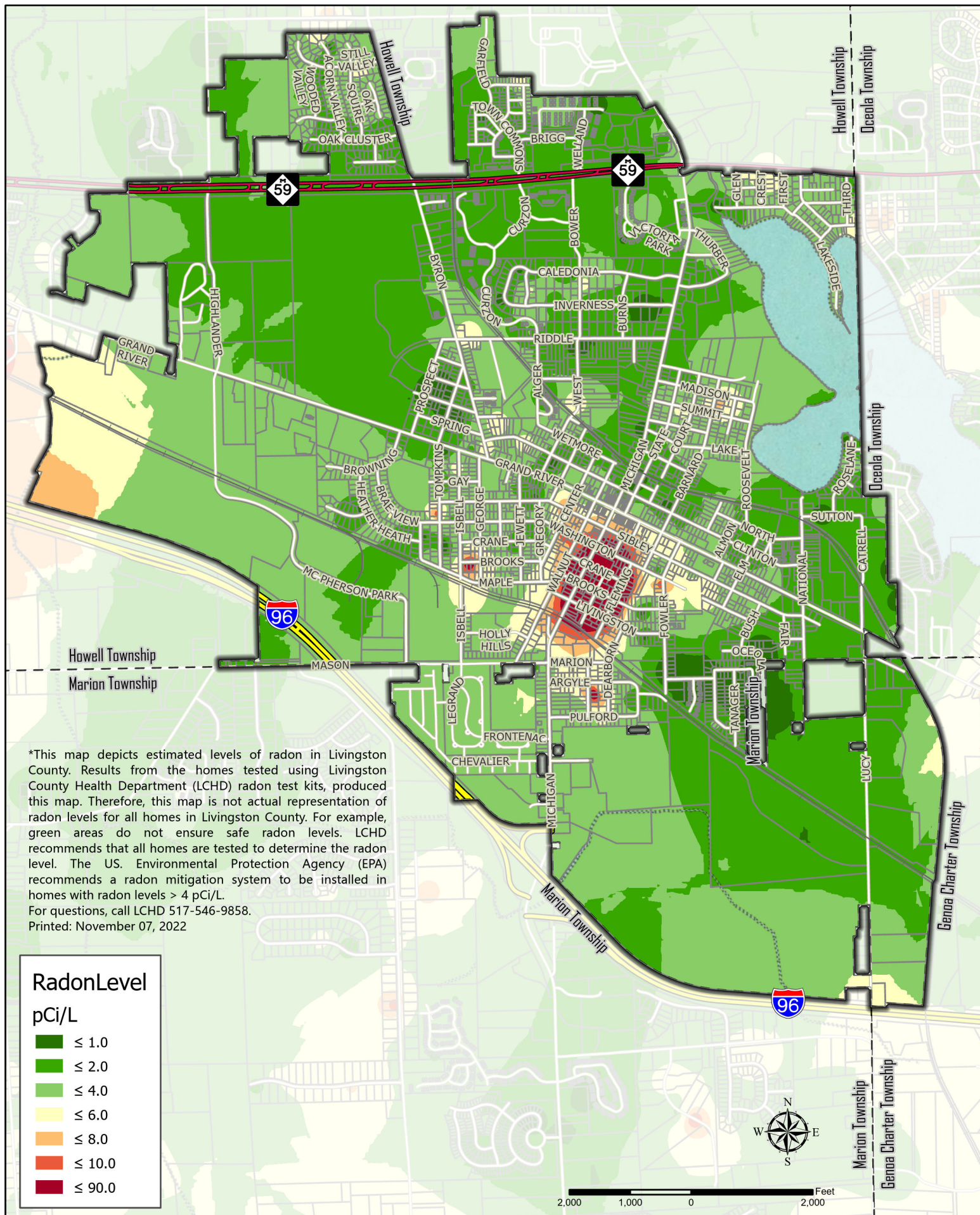
\*This map depicts estimated levels of radon in Livingston County. Results from the homes tested using Livingston County Health Department (LCHD) radon test kits, produced this map. Therefore, this map is not actual representation of radon levels for all homes in Livingston County. For example, green areas do not ensure safe radon levels. LCHD recommends that all homes are tested to determine the radon level. The US. Environmental Protection Agency (EPA) recommends a radon mitigation system to be installed in homes with radon levels > 4 pCi/L. For questions, call LCHD 517-546-9858. Printed: November 07, 2022



Livingston County, Michigan  
Information Technology Department  
G.I.S. Division 517.548.3230

\*Estimated Radon Levels in City of Brighton

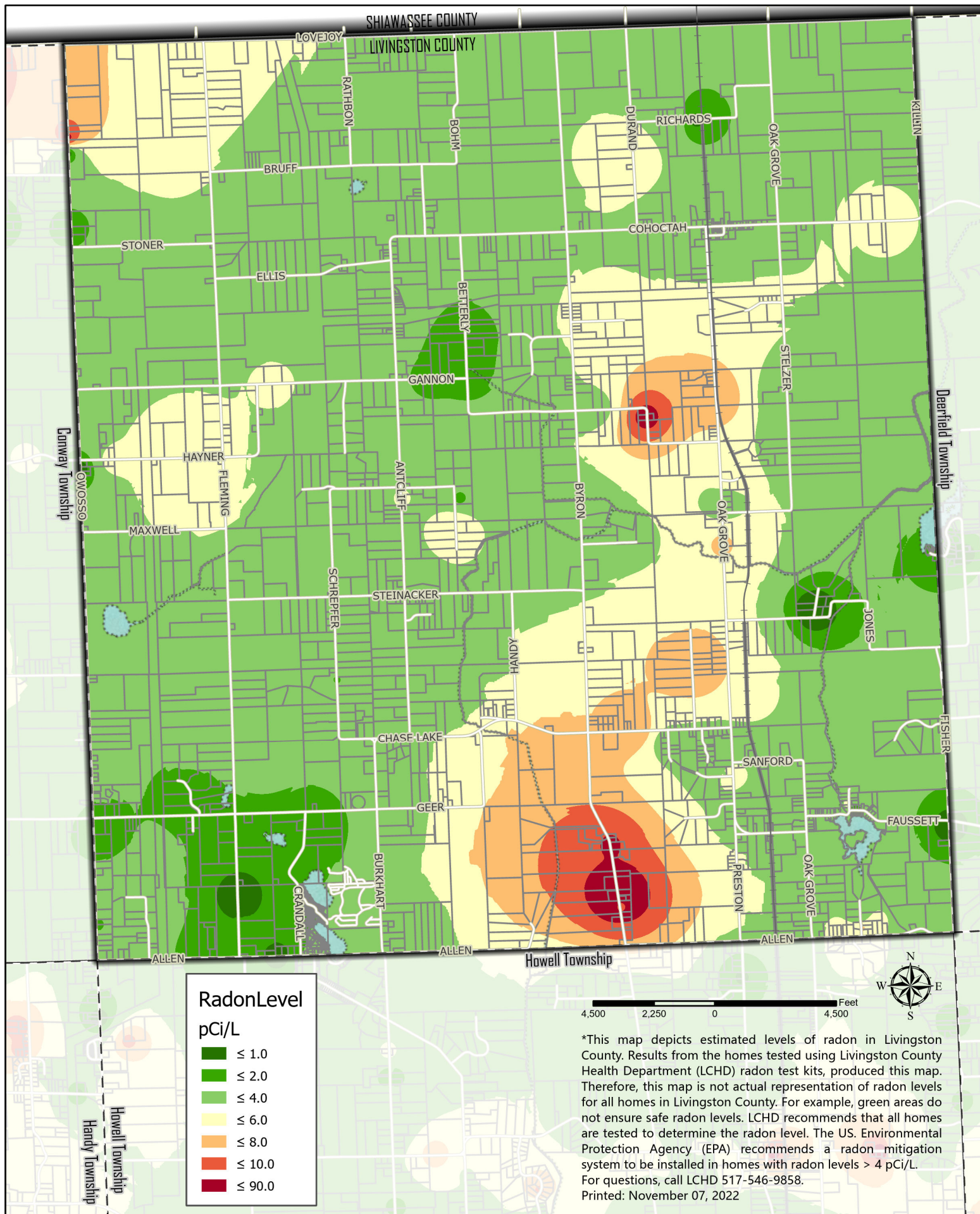




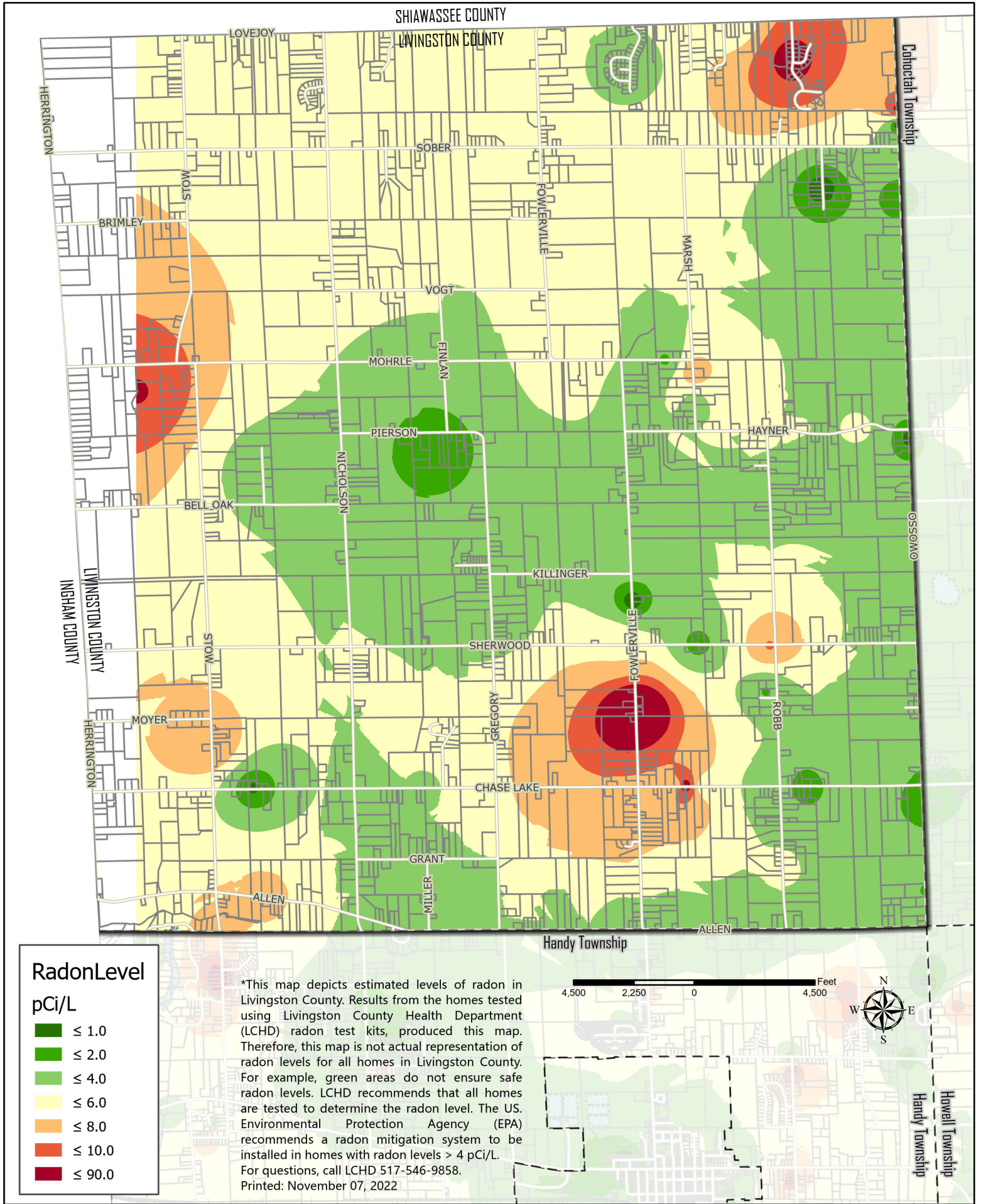
\*This map depicts estimated levels of radon in Livingston County. Results from the homes tested using Livingston County Health Department (LCHD) radon test kits, produced this map. Therefore, this map is not actual representation of radon levels for all homes in Livingston County. For example, green areas do not ensure safe radon levels. LCHD recommends that all homes are tested to determine the radon level. The US. Environmental Protection Agency (EPA) recommends a radon mitigation system to be installed in homes with radon levels > 4 pCi/L.  
For questions, call LCHD 517-546-9858.  
Printed: November 07, 2022



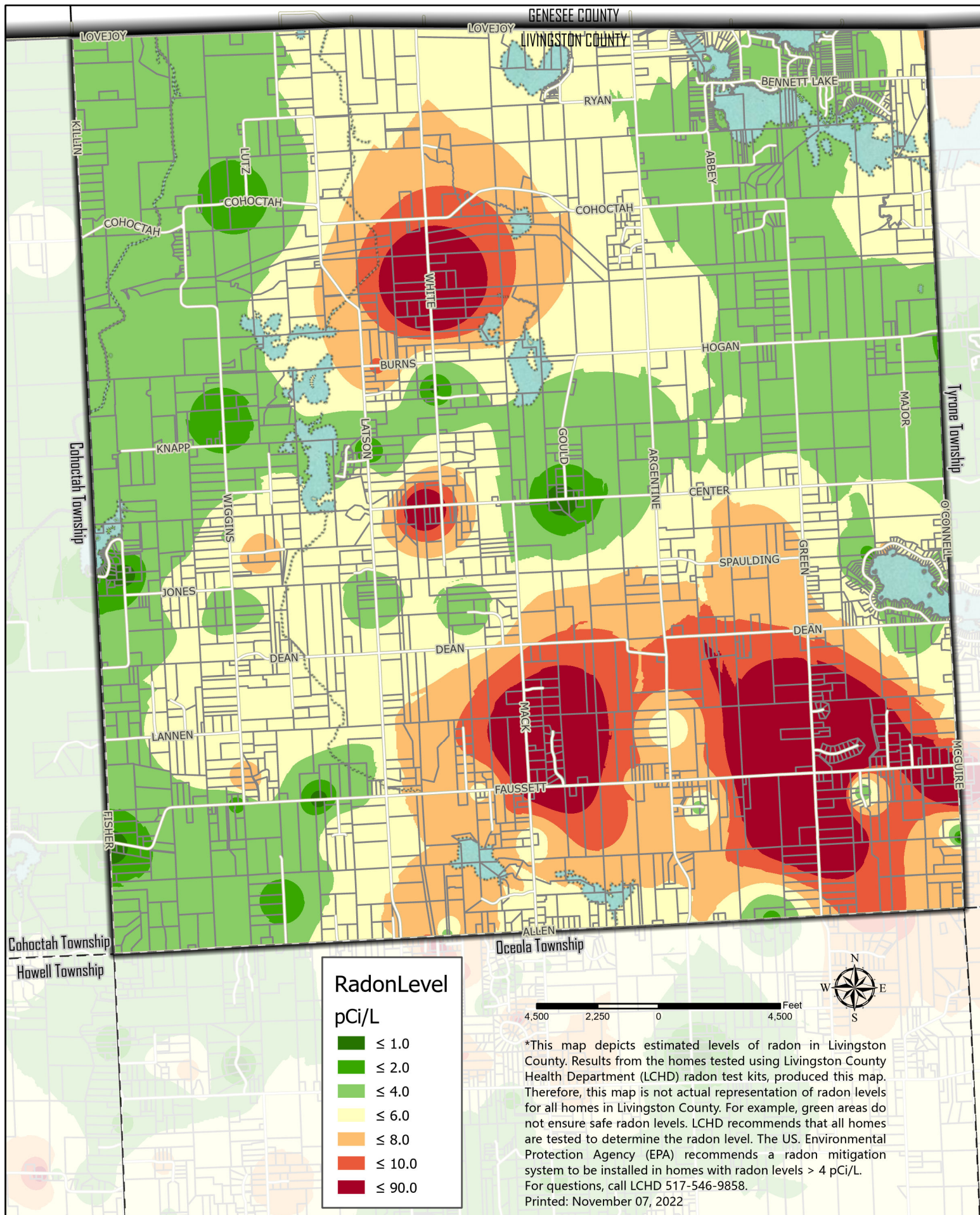




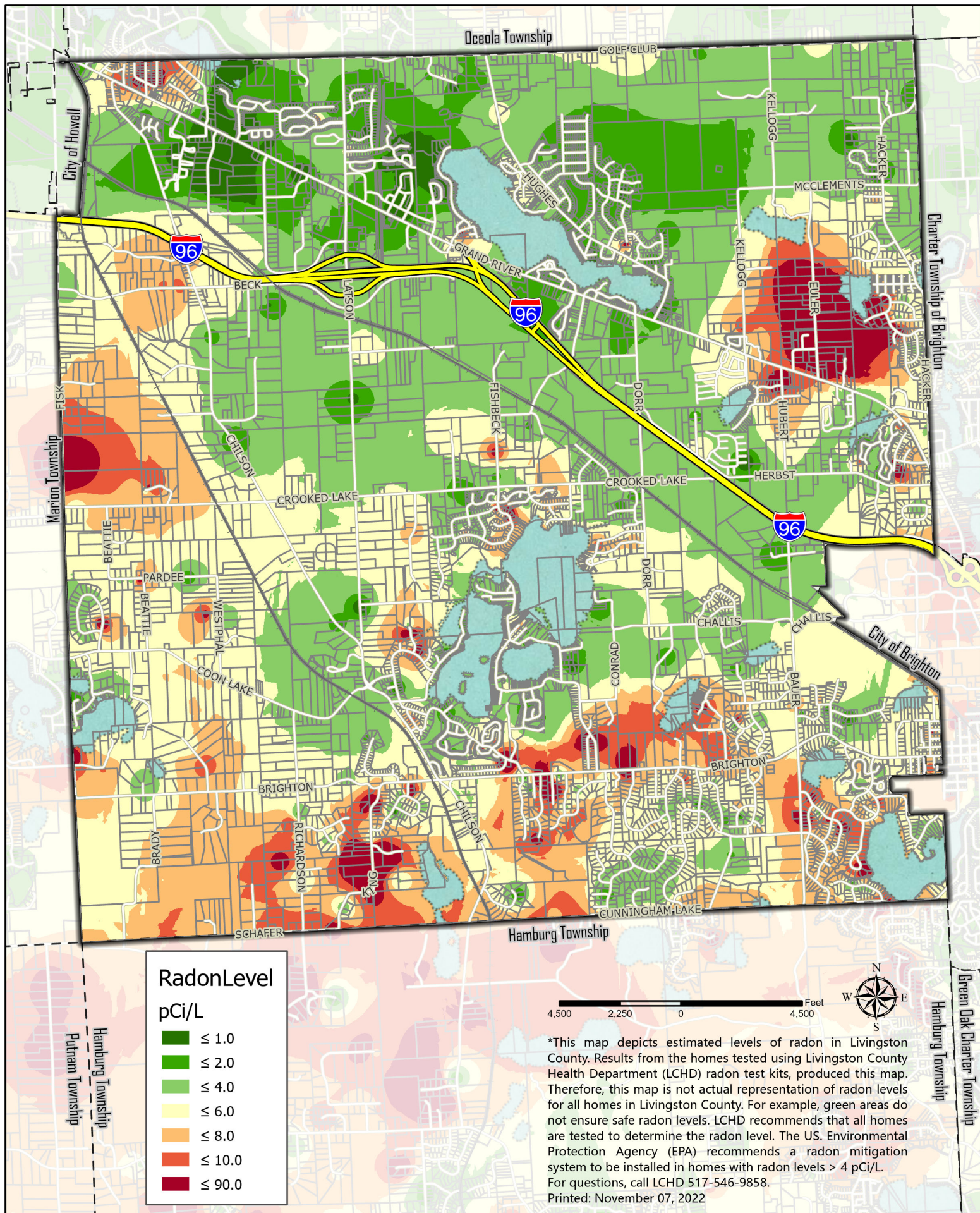




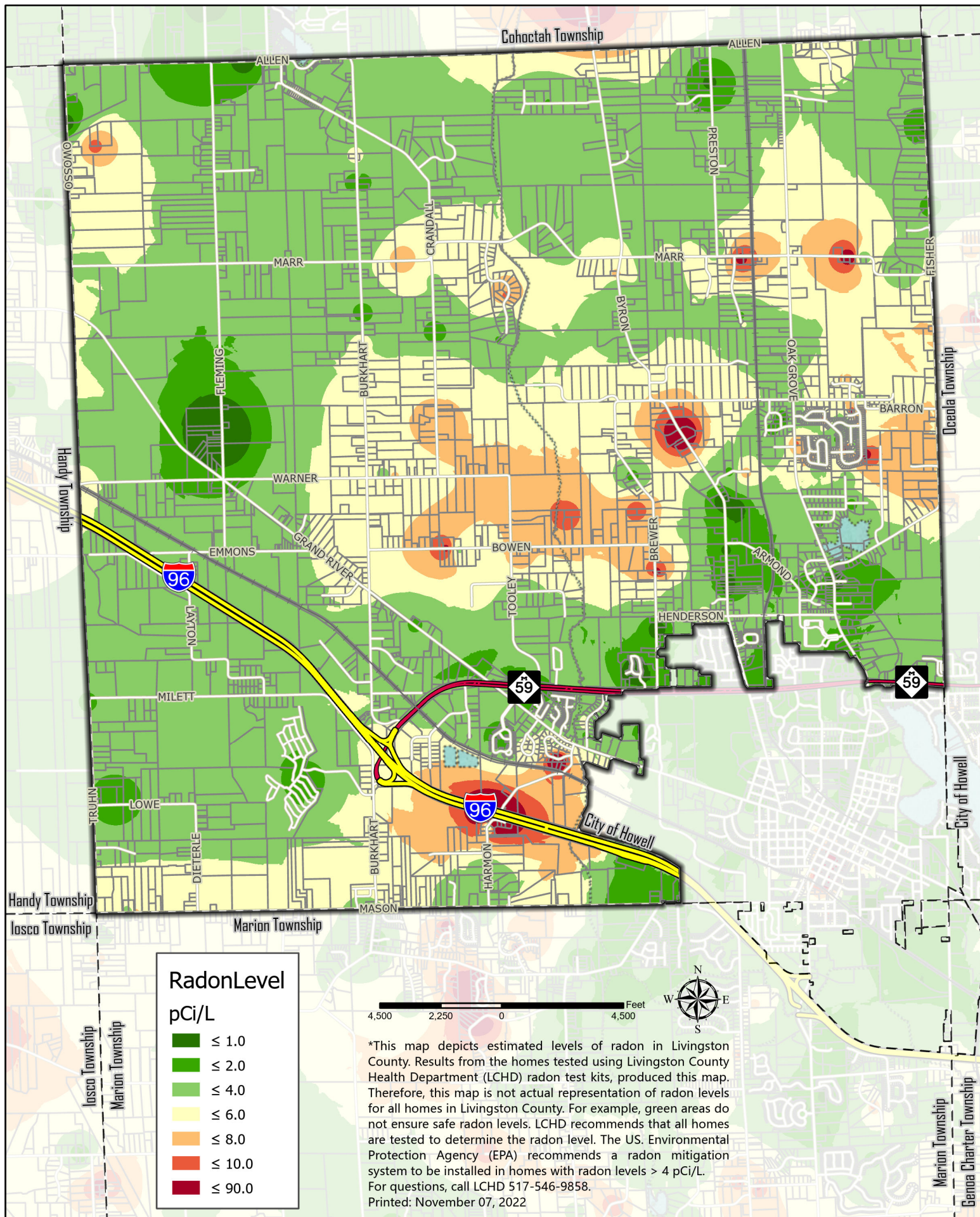




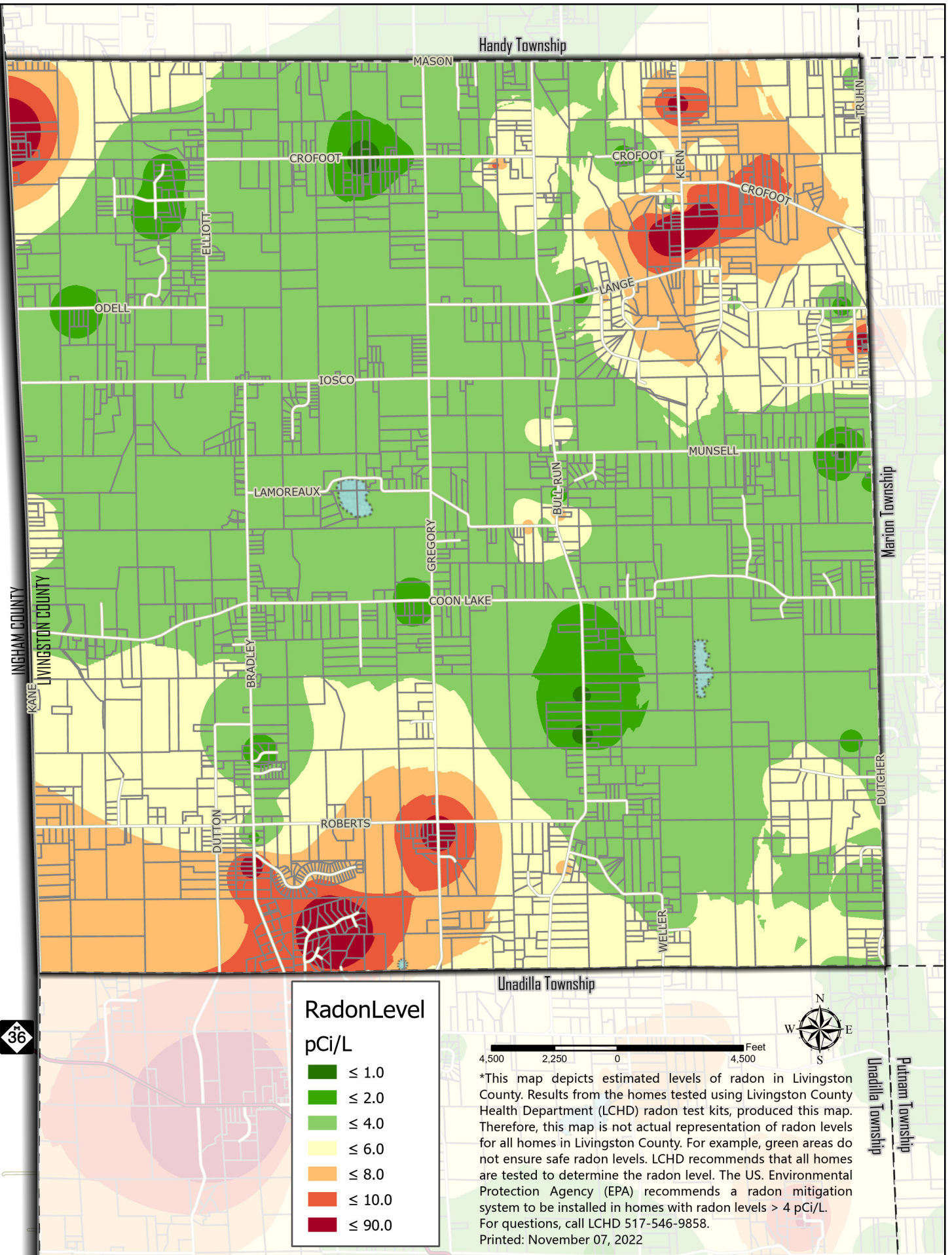




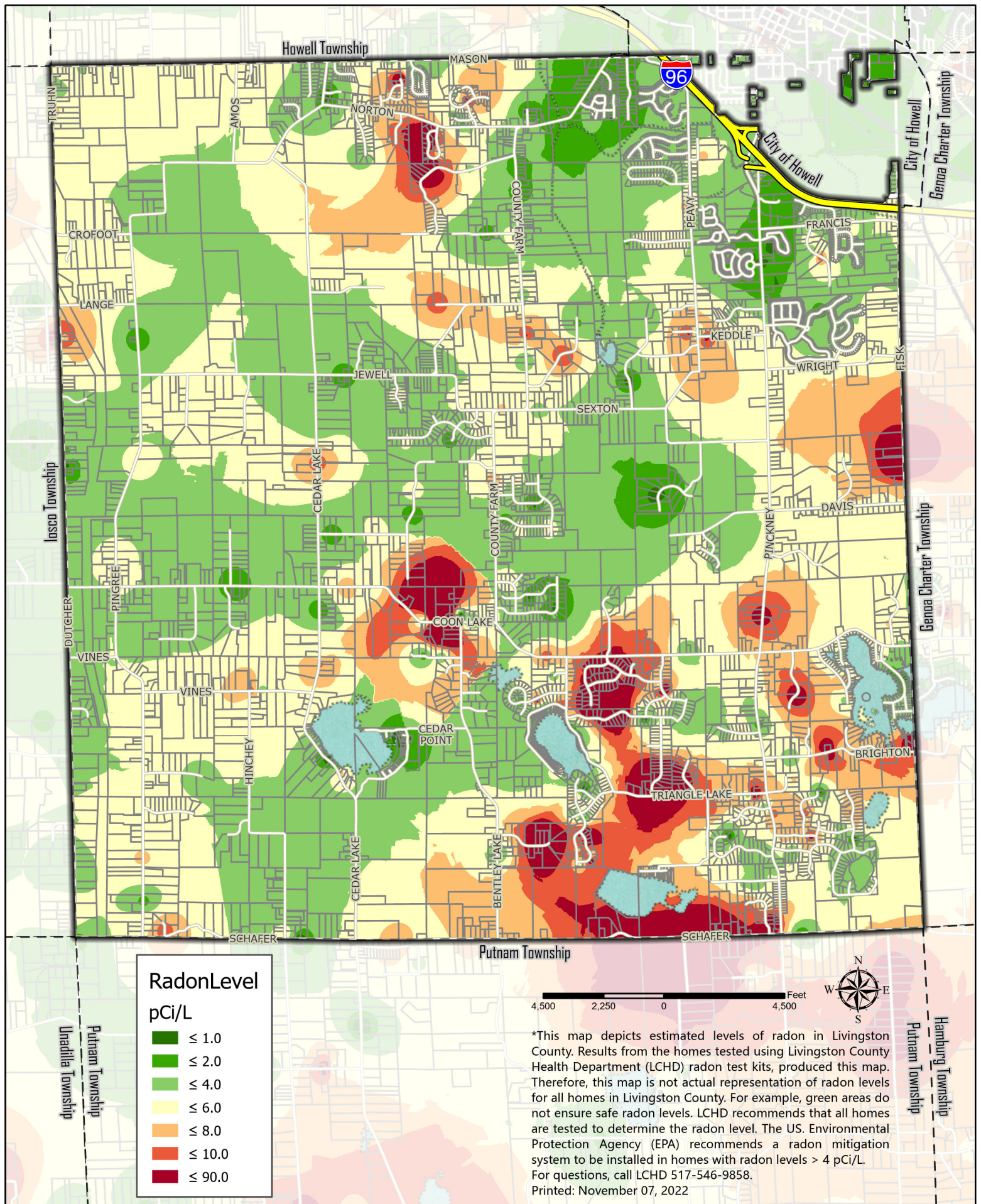




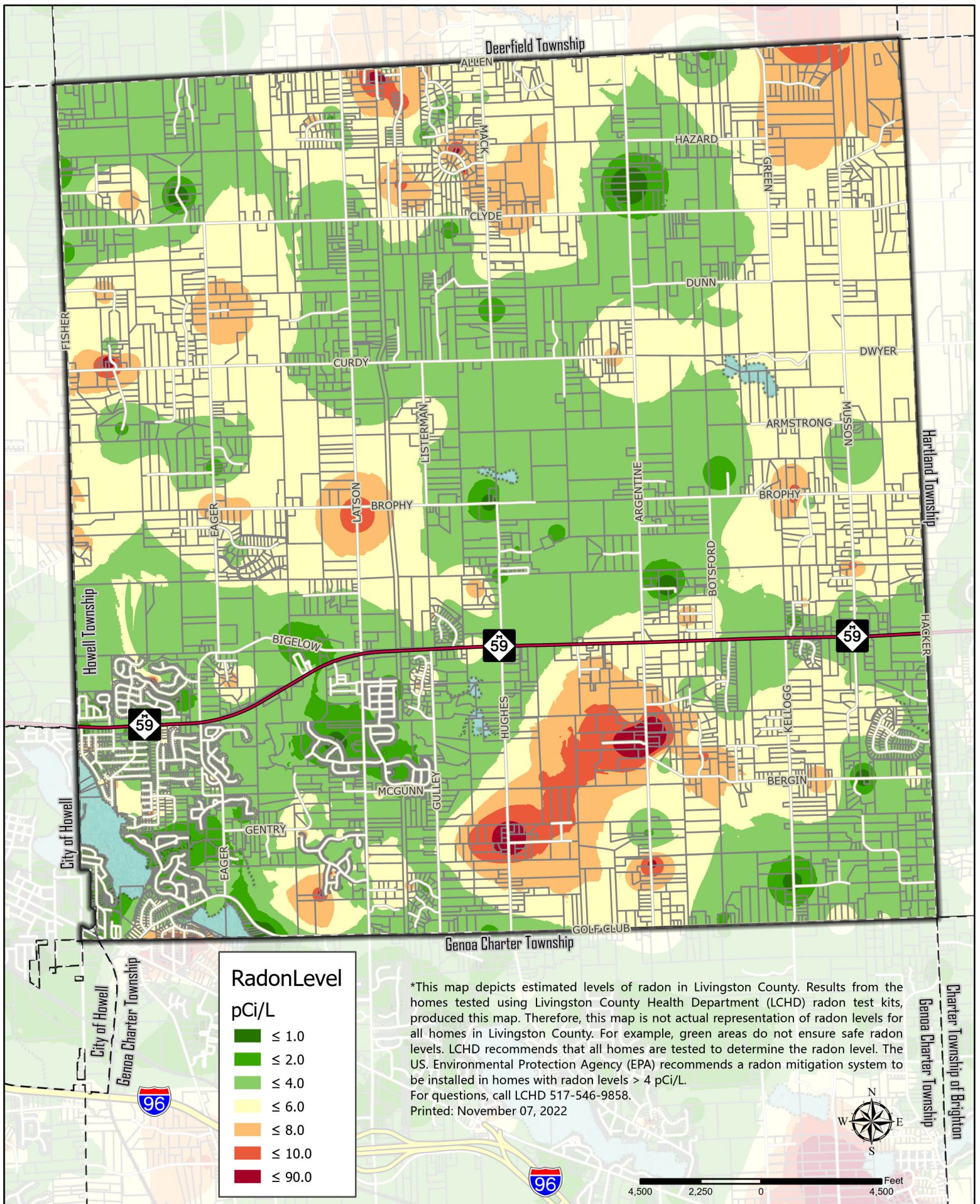








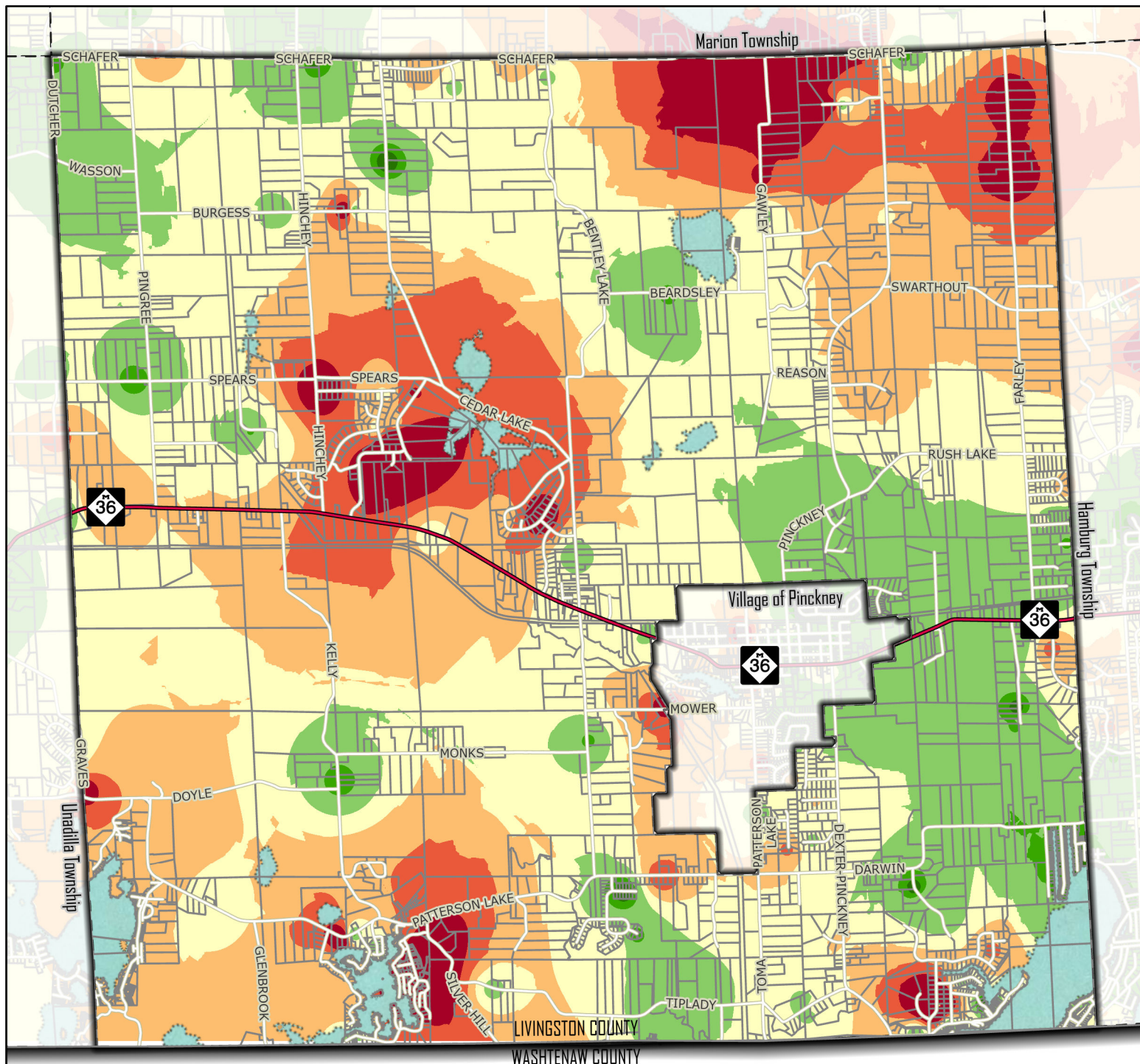




Livingston County, Michigan  
Information Technology Department  
G.I.S. Division 517.548.3230

\*Estimated Radon Levels in Oceola Township





## RadonLevel

pCi/L

- ≤ 1.0
- ≤ 2.0
- ≤ 4.0
- ≤ 6.0
- ≤ 8.0
- ≤ 10.0
- ≤ 90.0



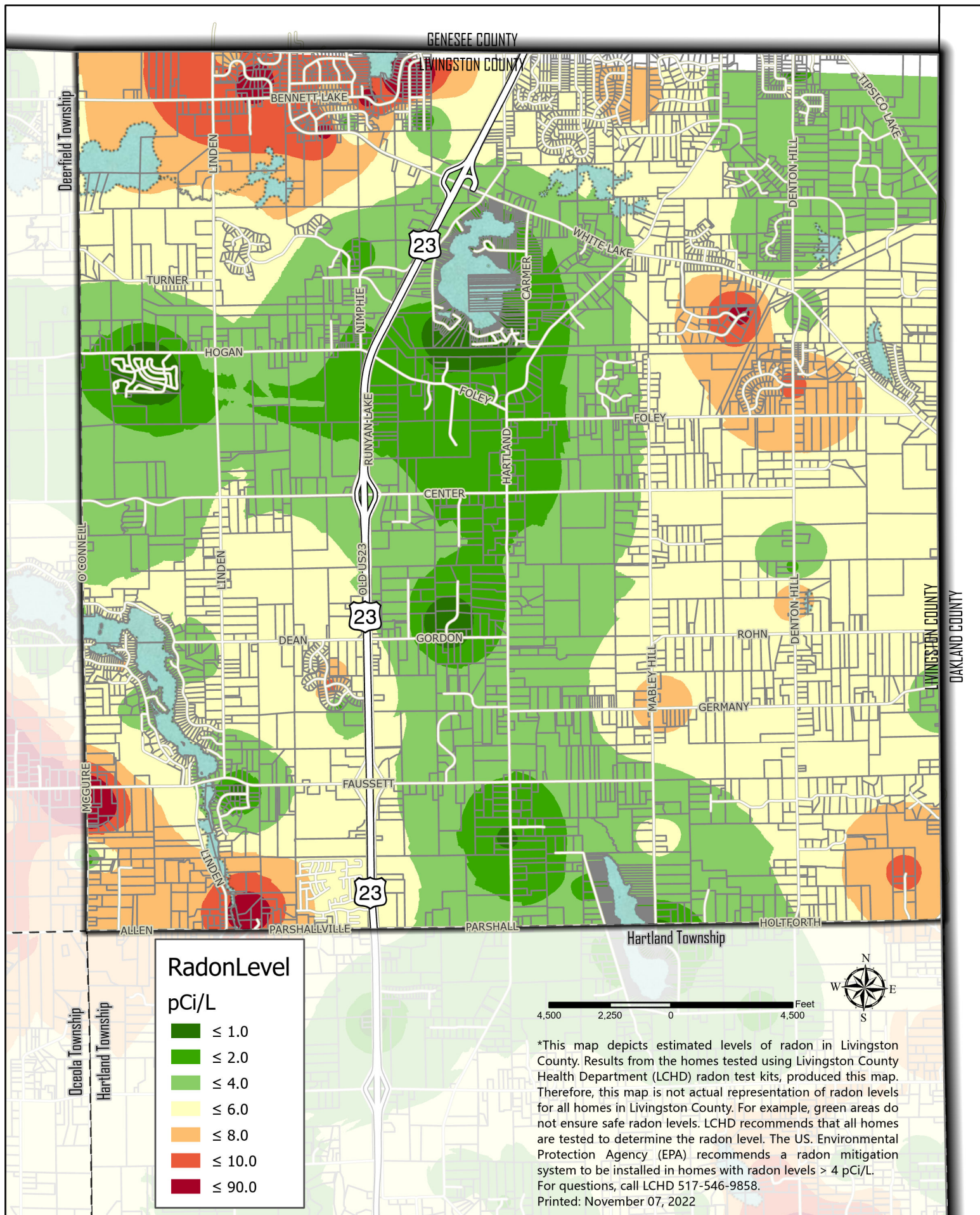
\*This map depicts estimated levels of radon in Livingston County. Results from the homes tested using Livingston County Health Department (LCHD) radon test kits, produced this map. Therefore, this map is not actual representation of radon levels for all homes in Livingston County. For example, green areas do not ensure safe radon levels. LCHD recommends that all homes are tested to determine the radon level. The US. Environmental Protection Agency (EPA) recommends a radon mitigation system to be installed in homes with radon levels > 4 pCi/L. For questions, call LCHD 517-546-9858. Printed: November 07, 2022



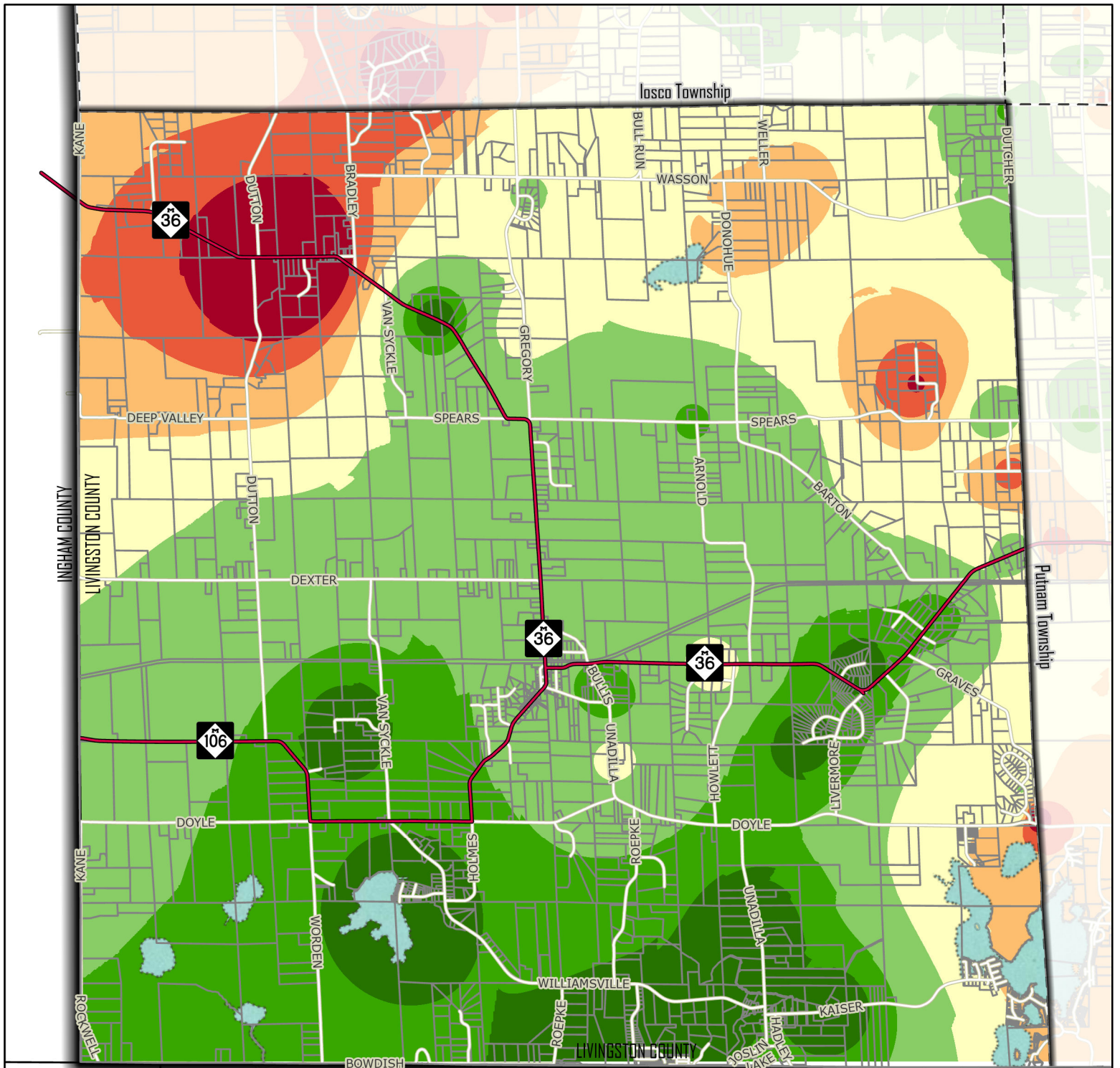
Livingston County, Michigan  
Information Technology Department  
G.I.S. Division 517.548.3230

\*Estimated Radon Levels in Putnam Township









### RadonLevel

pCi/L

- ≤ 1.0
- ≤ 2.0
- ≤ 4.0
- ≤ 6.0
- ≤ 8.0
- ≤ 10.0
- ≤ 90.0



\*This map depicts estimated levels of radon in Livingston County. Results from the homes tested using Livingston County Health Department (LCHD) radon test kits, produced this map. Therefore, this map is not actual representation of radon levels for all homes in Livingston County. For example, green areas do not ensure safe radon levels. LCHD recommends that all homes are tested to determine the radon level. The US. Environmental Protection Agency (EPA) recommends a radon mitigation system to be installed in homes with radon levels > 4 pCi/L. For questions, call LCHD 517-546-9858. Printed: November 07, 2022



Livingston County, Michigan  
Information Technology Department  
G.I.S. Division 517.548.3230

## \*Estimated Radon Levels in Unadilla Township



