

Ferry County Official Local

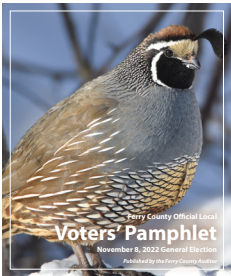
Voters' Pamphlet

November 8, 2022 General Election

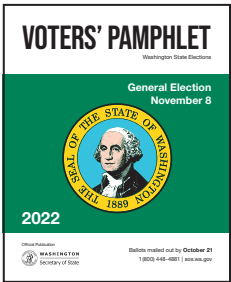
Published by the Ferry County Auditor

This year, look for both local and state voters’ pamphlets

The Ferry County Local Voters’ Pamphlet contains local Ferry County races and issues. If you didn’t receive a pamphlet, call (509) 775-5225 ext. 2500.



The State of Washington Voters’ Pamphlet contains federal and state races and issues. If you didn’t receive a state pamphlet, call 1-800-448-4881.



Accessible voting

An accessible voting unit (AVU) is equipped with visual and audio technology. Voters requiring reasonable accommodation or assistance may vote on the AVU in the Auditor’s Office starting October 21 through November 8.



Contents

Local & state pamphlets..... 2

Accessible voting..... 2

Voter qualifications..... 3

Register to vote 3

Registration deadlines..... 3

Military/overseas voters..... 3

Voter responsibilities..... 3

Replacement ballots 4

Returning your ballot..... 4

Ballot instructions 4

Ballot disqualification 5

Public records 5

Your signature matters 5

Frequently Asked Questions.. 6

Drop box locations..... 7

Sample ballot..... 8

Candidates 10

Propositions 19

**Cover photo courtesy
J. Foster Fanning**

To register to vote, you must be:

- A citizen of the United States;
- A legal resident of Washington State;
- At least 18 years old by Election Day;
- Not disqualified from voting due to a court order; and
- Not under Department of Corrections supervision for a Washington felony conviction



Register to vote

Go to VoteWA.gov on or before October 31 if you have a current Washington State driver license or I.D. card.

Complete and return a Washington State Voter Registration Form. Forms must be received in the Auditor's Office by October 31. Registration forms are available at post office, libraries, online, or by contacting the Ferry County Auditor's Office.

Come into the Ferry County Auditor's Office, Election Division, by 8:00 pm on Election Day.

Registration deadlines:

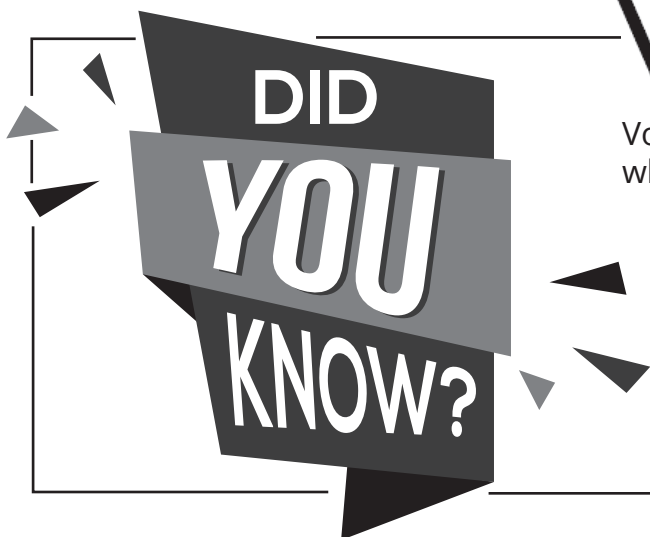
Voter registration and address changes online or by mail must be received by October 31. Starting November 1, visit our office to register to vote or change your address by 8:00 pm Election Day.

Military or overseas voters:

Maintain your voter registration while in the military or living outside the United States. To register, use your home of record (or that of a family member). You may receive your ballot by mail, email, or fax. Contact us for more information.

You are responsible for:

- Registering by the deadline;
- Updating your residential and/or mailing address; and
- Returning your ballot by 8:00 pm Election Day in an official ballot drop box, OR mailing your ballot with a postmark by Election Day.



VoteWA

VoteWA offers an easy-to-use online voter portal where you can:

- Register to vote.
- Update your address.
- Track the return of your ballot.
- View the voters' guide.
- Find a ballot drop box near you.

VoteWA.gov



Replacement ballots

You have a few options to receive a new ballot:

- You can request a new ballot online by visiting VoteWA.gov (log in and select Online Ballot)
- You can also call our office at 509-775-5225 ext. 1139 or e-mail delections@co.ferry.wa.us.



You are encouraged to request a replacement ballot online or by phone however you can still visit the Auditor's Office inside the Ferry County Courthouse and staff can print you a replacement.

Return your ballot on time!

- Mailing your ballot? The good news is you don't need a stamp! However, you do want to check USPS collection times to ensure that it will have a postmark on or before November 8.
- Prefer to skip the post office? Use an official ballot drop box. Locations are listed on page 15. Drop boxes are open until 8:00 pm on November 8!
- Track to see if we have received your ballot at VoteWA.gov (select ballot status).



Ballot instructions

- The ballot packet for the November 8 General Election will be mailed to you on October 21. The packet will include your official ballot, a security envelope, and a postage-paid return envelope.

- To vote the ballot, fill in the oval next to your choice with a blue or black pen. Vote for only one in each contest or measure.

- Place your voted ballot into the security envelope. If you forget the security envelope, your ballot will still be counted.



- Put the ballot/security envelope into the return envelope and seal.
- Sign and date your return envelope that has your name printed on it. Your signature on the return envelope is required for your ballot to be counted.
- Return your ballot to the Ferry County Auditor's Office by ballot drop box or mail. See pages 3 and 4 for more information on returning your ballot.
- Ballot must be in the drop box or postmarked by 8:00 pm, November 8.

Top four reasons a ballot cannot be counted

- Ballot received with a late postmark.
- Signature on the ballot envelope doesn't match the signature we have on file.*
- Ballot envelope is not signed.*
- Someone other than the voter has signed the return envelope.

* If a ballot is not signed or the signature doesn't match the signature on your voter registration, the voter is mailed a form to correct the issue.

Public records

Voter information that is available to the public (RCW 29A.08.710):

The following information is public record:

- Name
- Address
- Gender
- Date of Birth
- Elections in which a voter participated
- Date of registration

The following information is not public record:

- Social Security Number
- Driver's License number
- Phone number/email address
- Party affiliation (which is not collected by Washington State)
- Where and how a person registered
- Voter's signature

Your signature matters!

Signature Information

- Sign and date the voter declaration on the return envelope that has your name printed on it.
- We compare the signature on your ballot envelope with the signature on your voter registration. This is how we know you voted the ballot. Every signature is reviewed and verified!
- How do we get your signature? If you register or update using a paper registration form, we capture your signature from the form. If you register or update through the Department of Motor Vehicles, we capture the signature from your Washington State Driver License or I.D. card.
- Do not sign for another registered voter.
- A Power of Attorney does not have authority to sign for the voter. If a voter is unable to sign, they should make a mark on the signature line and have their mark witnessed by two people. The two witnesses need to sign on the lines provided.
- Our office can have more than one signature on file for you. If you want to provide another signature, please contact us with that request (Signature Update request).
- Reference WAC 434-250-120 for more information.



Frequently Asked Questions

My (spouse, roommate) signed my ballot envelope. What should I do?

This is a very common mistake! If someone has mistakenly signed your ballot envelope, draw a line through the incorrect signature and sign your name directly above the correction.

I forgot to put my ballot in the included security envelope. Is that ok?

Yes! Your ballot will count as long as you have signed the return envelope.

I reopened my ballot envelope and sealed it shut with tape/glue. Will my vote still count?

Yes! As long as the signature on your return envelope matches your registration signature, your vote will count.

I received two ballots, does that mean I get to vote twice?

Sorry you don't get to vote twice! If you have recently moved or changed your address multiple ballots may be mailed to you. Each ballot envelope has a unique barcode which prevents voting multiple times. Once a ballot has been received all other ballots become void.

I got a letter saying my signature did not match the signature on file with your election office. Is my ballot no longer accepted?

All signatures are verified by staff trained by the Washington State Patrol. Staff are trained to look for signature similarities and patterns. However, signatures often change and your signature may no longer match what is currently on file. If you received a signature challenge letter, please sign the letter and promptly return it to our office via mail or email as soon as possible. Your ballot will be counted as soon as we receive your signed letter. Your updated signature letter will also be scanned and your new signature will be added to our database.

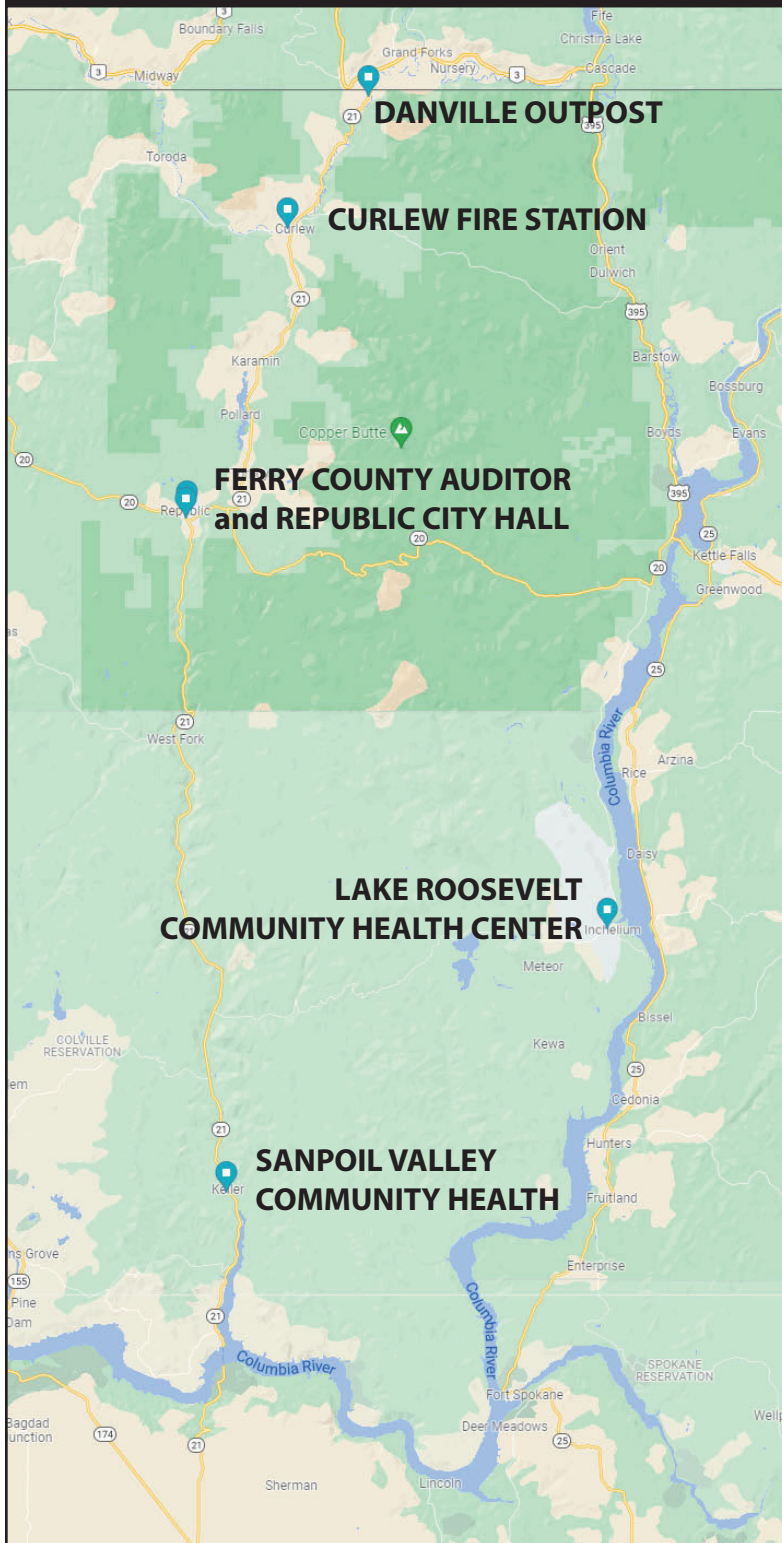
I lost/misplaced my original ballot. How do I get another one?

You have a few options to receive a new ballot:

- You can request a new ballot online by visiting VoteWA.gov (log in and select Online Ballot)
- You can also call our office at 509-775-5225 ext. 1139 or e-mail delections@co.ferry.wa.us.

You are encouraged to request a replacement ballot online or by phone however you can still visit the Auditor's Office inside the Ferry County Courthouse and staff can print you a replacement.

FERRY COUNTY ELECTIONS Drop Box Locations



Drop box locations:

Ferry County Auditor's Office
350 E Delaware Ave
Republic WA
Hours are 8:00 a.m. to 4:00 p.m.

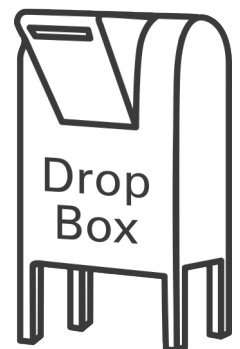
Republic City Hall
987 S Clark Ave
Republic WA

Danville Drop Box
Danville Outpost
19097 N HWY 21
Danville WA

Curlew Drop Box
Curlew Fire Station
30 Customs Rd
Curlew WA

Keller Drop Box
Sanpoil Valley Community Health
11665 S Hwy 21
Keller WA

Inchelium Drop Box
Lake Roosevelt Community Health Center
39 Short Cut Rd
Inchelium WA



Sample Ballot
Ferry County, Washington
November 8, 2022

2022 General Election

Precinct Sample 0101.1

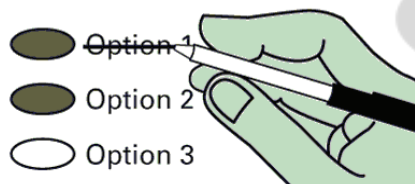
Instructions

Making selections



Completely fill in the oval to the left of your choice. Voting more than once for a contest will be an over vote and no votes for that contest will be counted.

How to correct a mistake



Draw a line through the entire candidate's name. You then have the option of making another choice.

Optional write-in



To add a candidate, fill in the oval provided to the left of "Write-in" and print the name clearly on the line.

Start Voting Here



Advisory Votes

Advisory Vote 39 Engrossed Substitute Senate Bill 5974

The legislature increased, without a vote of the people, the tax on aircraft fuel from 11 cents to 18 cents per gallon, costing \$14 million in its first ten years, for government spending.

This tax increase should be:

- ☐ Repealed
☐ Maintained

Advisory Vote No. 40 Engrossed Substitute House Bill 2076

The legislature imposed, without a vote of the people, premiums on "transportation network companies" to provide workers compensation to their drivers, costing an indeterminate amount in its first ten years, for government spending.

This tax increase should be:

- ☐ Repealed
☐ Maintained

Vote for only one candidate in each race.

READ: Each candidate for partisan office may state a political party that he or she prefers. A candidate's preference does not imply that the candidate is nominated or endorsed by the party, or that the party approves of or associates with that candidate.

Federal - Partisan Offices

U.S. Senator

- ☐ **Patty Murray**
(Prefers Democratic Party)
☐ **Tiffany Smiley**
(Prefers Republican Party)
☐ Write-In

Congressional District 5 U.S. Representative

- ☐ **Cathy McMorris Rodgers**
(Prefers Republican Party)
☐ **Natasha Hill**
(Prefers Democratic Party)
☐ Write-In

State - Partisan Office

Secretary of State Unexpired 2 year term

- ☐ **Steve Hobbs**
(Prefers Democratic Party)
☐ **Julie Anderson**
(Prefers Nonpartisan Party)
☐ Write-In



Who donates to campaigns?

View contributors for candidates and measures

Public Disclosure Commission

www.pdc.wa.gov
 Toll Free (877) 601-2828

Turn ballot over to continue voting



Legislative - Partisan Offices**Legislative District 7
State Senator**

☐ **Shelly Short**
(Prefers Republican Party)

☐ Write-In

**Legislative District 7
State Representative Pos. 1**

☐ **Jacquelin Maycumber**
(Prefers Republican Party)

☐ **Lonny Ray Williams**
(Prefers Republican Party)

☐ Write-In

**Legislative District 7
State Representative Pos. 2**

☐ **Joel Kretz**
(Prefers Republican Party)

☐ Write-In

County - Partisan Offices**County Assessor**

☐ **Rachel D. Siracuse**
(Prefers Republican Party)

☐ Write-In

County Auditor

☐ **Dianna L Galvan**
(Prefers Republican Party)

☐ **Liz Stinson**
(Prefers Republican Party)

☐ Write-In

**County Clerk
Short & Full**

☐ **Melanie Breezee**
(Prefers Republican Party)

☐ Write-In

County Commissioner #2

☐ **Nathan Davis**
(Prefers Republican Party)

☐ **Robert P. Dean Jr**
(Prefers Independent Party)

☐ Write-In

County - Partisan Offices**Prosecuting Attorney**

☐ **Kathryn I. Burke**
(Prefers Republican Party)

☐ Write-In

County Sheriff

☐ **Ray Maycumber**
(Prefers Republican Party)

☐ Write-In

County Treasurer

☐ **Shannon P Jensen**
(Prefers Republican Party)

☐ Write-In

**Judicial
Nonpartisan Offices****Supreme Court
Justice Position #01**

☐ **Mary I. Yu**

☐ Write-In

**Supreme Court
Justice Position #05**

☐ **Barbara Madsen**

☐ Write-In

**Supreme Court
Justice Position #06**

☐ **G. Helen Whitener**

☐ Write-In

District Court Judge

☐ **Tom Brown**

☐ Write-In

County - Nonpartisan Office**Public Utility Commissioner #1**

☐ **Chris Kroupa**

☐ Write-In

School District**Proposition No. 1
Inchelium School
District No. 70
Replacement Educational
Programs and Operation Levy**

The Board of Directors of Inchelium School District No. 70 adopted Resolution No. 02-22-23, concerning a proposition for a replacement levy for education. This proposition would authorize the District to meet the educational needs of its students by levying the following excess taxes, in place of an expiring levy, on all taxable property within the District, for support of essential educational programs and operation expenses not funded by the State of Washington:

Collection Year	Estimated Levy	
	Rate/\$1,000 Assessed Value	Levy Amount
2023	\$1.58	\$130,000
2024	\$1.56	\$135,000
2025	\$1.54	\$140,000

all as provided in Resolution No. 02-22-23.
Should this proposition be approved?

☐ **Levy Yes**

☐ **Levy No**

**RACHEL D
SIRACUSE**

(Prefers Republican Party)

UNOPPOSED**Elected Experience**

First elected as Ferry County Assessor in 2002; first elected to City of Republic council in 2017; elected several times as PCO for my political party.

Other Professional Experience

I have worked in the Assessor's office and as the Assessor since 2000.

Education

I graduated high school in Republic; one year of college at Spokane Community College; continuing education in my position as the county assessor and as an accredited appraiser.

Community Service

Member of Grace Bible Fellowship; on the board for the Piece n' Pals quilt guild; council member for the City of Republic, local Republican Party.

Statement

I was born in the City of Republic, Ferry County and graduated from high school here. I raised three children who also attended school in Republic. They are now grown and have children of their own giving me nine grandchildren currently.

I am proud to serve the county and its property owners as the county assessor. I work hard to stay within the boundaries of my budget each year and yet keep my staff and myself up-to-date with our technology. I'm pleased to provide the public access to our data through TaxSifter and MapSifter. I look forward to serving as County Assessor for another four years.

For more information

(509) 680-4417

rsiracuse@msn.com



DIANNA L GALVAN

(Prefers Republican Party)

Elected Experience

Current Ferry County Auditor 2007-Present

Other Professional Experience

Served as EMT for Ferry County EMS District #1 from 2002-2007; Served as fill-in EMT for Colville Confederated Tribes from 2002-2007; Recording Deputy for Ferry County Auditor from 1990-1994; Elections Administrator for Ferry County Auditor from 1994-2009; Washington State Vehicle Licensing Agent from 1994-Present; Current member of the Washington State Association of County Auditors.

Education

I hold several certifications through my position in the Auditor's Office, including: Certified Elections Administrator, Certified Licensing Agent.

Community Service

No Information Submitted

Statement

I have had the honor of serving the people of Ferry County as Auditor for 16 years. Prior to being elected as Ferry County Auditor, I was the Chief Deputy Auditor for 8 years and Deputy Auditor for 7 years.

As the Ex-officio State Auditor I play a vital role of oversight of taxpayers' dollars. By applying for grants I have been able to purchase ballot tabulation systems, computers, security cameras, secure locking systems for the elections office at a savings for the county. With the help of the Secretary of State's office I was able to design and maintain our first website. The website included not only elections information, but the annual reports, preliminary budgets, final budgets and recording information. My goal as County Auditor has been to provide the citizens of Ferry County with open government accountability, ease of access to recorded documents, accessible and secure elections and maintaining a professional, knowledgeable, courteous, office for the public.

(509) 775-2794; dianna_galvan@yahoo.com

For more information

(509) 775-2794

dianna_galvan@yahoo.com



LIZ STINSON

(Prefers Republican Party)

Elected Experience

Other Professional Experience

Elections Administrator for Ferry County Auditor's Office, 2007-present

Bank Teller for Bank of America, Republic, WA, 2004-2007

Education

Graduated Gladys Porter High School, 1996

University of Texas at Brownsville, 1996-1997, 2002-2003

Community Service

I have volunteered in many community activities such as: Republic Rodeo, Ferry County Fair, Prospector's Days, Winter Fest, Eagle Track Raceway, Sanpoil Grange events and Eagles Auxiliary events.

I have been a Girl Scout leader, Junior Grange Leader, and Camp Fire Leader, in addition to coaching soccer and t-ball.

I am member of TCMRA, Eagles Auxiliary, Little Guys Wrestling and I am now on the County Recreation & Resource Board.

Statement

As an employee of the Ferry County Auditor's office, I have experience and knowledge in two of our six departments. My expertise lies in my knowledge of our Elections Department. I am certified by the Washington State Secretary of State as an Elections Administrator. I have the drive, desire, and intelligence to learn and effectively administer the other departments in the Auditors office, to better serve our community.

My passion is elections, and as Auditor, I plan to keep the transparency, integrity and security of the election process. I want to represent all of Ferry County, and I want to continue to be accountable for every election, as I have as your Elections Administrator for the past 15 years. I want everyone that comes into the auditor's office to leave knowing that their needs are important. I will improve many of our administrative functions in all departments and improve customer service.

Ferry County is my home. I have lived here for over 18 years. I am raising 2 kids here with my husband and very involved in our community. I am asking you to please trust that I can make a difference.

I would sincerely appreciate your vote.

For more information

(509) 429-8250

Lizstinson4auditor@gmail.com



**MELANIE
BREEZEE**

(Prefers Republican Party)

UNOPPOSED

Elected Experience

No Information Submitted

Other Professional Experience

Chief Deputy Clerk for Ferry County Superior Court. Manager and assistant manager in a variety of positions and a bank teller.

Education

Pe Ell High School in Pe Ell, WA.

On the job training as Chief Deputy Clerk of Superior Court.

Community Service

I have helped with various functions that the Ferry County Eagles puts on, volunteered at the Ferry County Fair, and I have spent my free time helping people of all ages learn about horses.

Statement

My name is Melanie Breezee, but most of you know me as Mel. I moved to the area in 2005 and have lived in Republic for 5 years. Originally I am from a small town similar to Republic which makes Ferry County feel like home. I have been working under the Ferry County Clerk for nearly 2 years and enjoy every aspect of the job. As the current Chief Deputy in Superior Court, I never thought I would run for County Clerk, but I am excited for the challenges that will arise with the new laws, technology, and processes being implemented. I look forward to serving the community as your County Clerk. Please vote for me!

For more information

(509) 207-8010

breezeeforclerk@gmail.com

No photo
submitted

**NATHAN
DAVIS**

(Prefers Republican Party)

No statement submitted

For more information

(509) 207-8137

nathanx92@hotmail.com



**ROBERT P
DEAN JR**

(Prefers Independent Party)

Elected Experience

No information submitted.

Other Professional Experience

Between 1965 and 1988, I served in the U.S. Army and the U.S. Air Force. Worked for ATA Air Lines for 20+ years as a flight engineer.

Education

Graduated from New Castle High School, and Pittsburgh Institute of Aeronautics.

Community Service

I served in the U.S. military for 20 years. Now retired, I serve my community as a bus driver for the Republic School District safely transporting our children to and from school.

Statement

I am an open-minded, independent conservative, who is blessed to live in and serve the greatest country in the world and to live in a county I'm proud of. I committed early on to live in service to my country and defend the ideals that our founding fathers laid out in the Declaration of Independence and the Constitution.

I am running for Ferry County Commissioner for District #2. My goals are to allocate our tax dollars wisely and transparently; provide the financial support needed to adequately staff and train emergency management (i.e., law enforcement, EMS, and fire department); secure proper funding for maintenance, and emergency preparedness; keep the public aware of issues and solicit feedback before making important decisions. I will welcome public comment and involvement because the people of this county deserve a voice in their government. Additionally, I will honor our county's heritage, while preparing and managing for growth.

If elected, I will serve to the best of my ability and do my utmost to be a benefit to you and the county.

For more information

robertdean.commissioner@gmail.com

**KATHRYN I
BURKE**

(Prefers Republican Party)

UNOPPOSED**Legal/Judicial Experience**

Kathryn Burke joined the Ferry County Prosecutor's Office in 2014 and has served as the elected prosecutor since 2015. Prior to joining the prosecutor's office, Kathryn served as a public defender in Okanogan County from 2012 to 2014.

Other Professional Experience

Kathryn is a member of the Ferry County Bar Association, the Washington Association of Prosecuting Attorneys, the Washington Association of Coroners/Medical Examiners, and the Washington Association of County Officials. Kathryn serves on several boards and committees, including the Washington State Bar Association Small Town and Rural Committee and the WACO Education Committee.

Education

University of Washington, B.A. (2006); Seattle University, J.D. (2011)

Candidate Statement

Having been raised in Ferry County, I have a strong connection to this county and its citizens, and share the values of this community. My number one priority to ensure that this County is a safe and healthy environment for our citizens and their families.

During my time as Prosecuting Attorney, I have handled hundreds of criminal cases from the simplest misdemeanors to serious Class A felonies. I bring to this office a strong work ethic, proven experience, and passion for public service. I have practiced with integrity and professionalism under extreme pressure, while also facing the added difficulties of a dwindling economy and budget cuts. In conjunction with my role as prosecutor, I also serve as the Ferry County Coroner, the duties of which I perform with tact, sensitivity, and compassion.

Our legal landscape has been drastically altered with recent legislation and court decisions which impact the delivery of law enforcement and criminal justice services. Despite these new challenges, I remain committed to protecting the rights of all citizens and holding offenders accountable. I humbly ask for your vote and I look forward to continuing to serve the citizens of Ferry County.

For more information

(206) 930-8332

burkeforferrycountyprosecutor@gmail.com

Candidate statements are printed as submitted and are not edited for factual or grammatical accuracy by the Auditor's Office.

**RAY
MAYCUMBER**

(Prefers Republican Party)

UNOPPOSED**Elected Experience**

Two (2) term Ferry County Sheriff January 2014 - Current

Other Professional Experience

Police Officer - Republic Police Department May 2001 - June 2003

Deputy Sheriff - Ferry County Sheriff's Office June 2003 - October 2009

911 Coordinator / Chief Criminal Deputy - Ferry County Sheriff's Office - October 2009 - January 2014

Education

Bachelors Degree in Criminal Justice - Eastern Washington University

High School Diploma - Republic High School 1991

Community Service

No Information Submitted

Statement

During the last eight years as the Ferry County Sheriff, we've seen Natural disaster, predator conflict, a global pandemic and a time where the relationship between law enforcement and the public has been strained nationwide. The actions of a few, be they police, rioters or legislators enacting overly heavy handed legislation leading to a crisis in public safety, have created circumstances which have required new solutions to manage these trying times. Interest in a career in law enforcement is at a low statewide and our County's inability to allocate funding to offset that have created significant challenges in hiring and retention. I'm a working Sheriff who is up to facing those challenges. I have been a certified Peace Officer in Ferry County for over twenty years and am blessed to have served the community where my family has called home for over 100 years. I am a Christian, a husband, a father, a grandfather and a servant who believes in individual liberty and would be honored to continue that service. I humbly ask for your vote.

For more information

(509) 999-0636

rmaycumber@rcabletv.com

**SHANNON P
JENSEN**

(Prefers Republican Party)

UNOPPOSED**Elected Experience**

I was elected Ferry County Treasurer in 2021.

Other Professional Experience

Deputy Treasurer - Ferry County 1998-2008

Deputy Auditor - Ferry County 2008-2020

Treasurer - Ferry County 2021-current

Education

Graduated Republic High School - 1988

Graduated Spokane Community College - 1989

Community Service

I have been involved in various community activities. Some of which include volunteering at the Ferry County Fair and being a youth leader.

Statement

As the former Deputy Treasurer and Deputy Auditor for Ferry County I have all of the experience and knowledge to serve the community as the Ferry County Treasurer.

I have over 24 years of experience in county government. Of those 23 years I have spent 10 as the Ferry County Deputy Treasurer. The decade I spent in the Treasurer's office taught me how to properly address the tasks required as an elected official.

Ferry County has been my home for over 52 years. Spending my entire life in Republic has given me insight into properly leading the citizens of Ferry County.

Do to my drive to succeed as your Treasurer I ask for your vote to continue the work of safeguarding county funds.

For more information

the_jensens@mail.com

No photo
submitted

**TOM
BROWN**

UNOPPOSED

No statement submitted

For more information

tbrown68reb@hotmail.com

No photo
submitted

**CHRIS
KROUPA**

UNOPPOSED

No statement submitted

For more information

(509) 779-4695

ckroupa99@gmail.com

Replacement Educational Programs and Operation Levy

The Board of Directors of Inchelium School District No. 70 adopted Resolution No. 02-22-23, concerning a proposition for a replacement levy for education. This proposition would authorize the District to meet the educational needs of its students by levying the following excess taxes, in place of an expiring levy, on all taxable property within the District, for support of essential educational programs and operation expenses not funded by the State of Washington:

Collection Year	Estimated Levy Rate/\$1,000 Assessed Value	Levy Amount
2023	\$1.58	\$130,000
2024	\$1.56	\$135,000
2025	\$1.54	\$140,000

all as provided in Resolution No. 02-22-23.

Should this proposition be approved?

No statement in favor of this proposition was submitted.

No statement opposed to this proposition was submitted.



Ferry County Auditor
350 E Delaware Ste 2
Republic, WA 99166
(509) 775-5225 ext. 1139
delections@co.ferry.wa.us



NONPROFIT ORG
US POSTAGE PAID
PERMIT #25
REPUBLIC, WA

**Residential Customer
ECRWSS**

General Election

Tuesday, November 8, 2022

Make sure your ballot gets counted! Return your ballot:

- **In a ballot drop box by 8:00 p.m. November 8 OR**
- **In the mail, postmarked by November 8**
- **Track to see if we have received your ballot at VoteWA.gov**

