

**Sample Ballot
Ferry County, Washington
February 14, 2023**

2023 Special Election

Precinct Sample

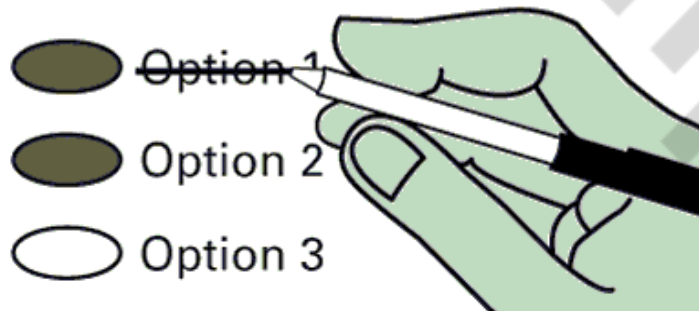
Instructions

How to Vote



Use a dark blue or black ink pen to completely fill in the oval to the left of your choice. Vote for one in each race. If you vote for more than one, no votes will be counted for that race.

How to correct a mistake



Draw a line through the entire measure response or candidate's name. Then you may make another choice.

School District

**Proposition No. 1
Kettle Falls School District No. 212
Replacement Educational Programs and Operation Levy**

The Board of Directors of Kettle Falls School District No. 212 adopted Resolution No. 2022-06, concerning a proposition to finance educational programs and operation expenses. This proposition would authorize the District to levy the following excess taxes, replacing an expiring levy, on all taxable property within the District, for educational programs and operation expenses not funded by the State:

<u>Collection Year</u>	<u>Estimated Levy Rate/\$1,000 Assessed Value</u>	<u>Levy Amount</u>
2024	\$1.98	\$1,546,384
2025	\$1.98	\$1,622,665
2026	\$1.98	\$1,702,760
2027	\$1.98	\$1,786,860

all as provided in Resolution No. 2022-06 and subject to legal limits on levy rates and amounts at the time of levy. Should this proposition be approved?

- Levy Yes
- Levy No

**Proposition No. 2
Kettle Falls School District No. 212
Replacement Capital Levy For Security, Technology and Infrastructure Improvements**

The Board of Directors of Kettle Falls School District No. 212 adopted Resolution No. 2022-07, concerning a proposition to finance security, technology and infrastructure improvements. This proposition would authorize the District to levy the following excess taxes, replacing an expiring levy, on all taxable property within the District, to improve security cameras, building access controls, and communication systems, upgrade computers, hardware, software and provide related training and support, and replace Elementary Library Annex roof:

<u>Collection Year</u>	<u>Estimated Levy Rate/\$1,000 Assessed Value</u>	<u>Levy Amount</u>
2024	\$0.49	\$387,828
2025	\$0.49	\$406,706
2026	\$0.49	\$426,527
2027	\$0.49	\$447,340

all as provided in Resolution No. 2022-07. Should this proposition be approved?

- Levy Yes
- Levy No

Who donates to campaigns?
View contributors for candidates and measures
Public Disclosure Commission
www.pdc.wa.gov
Toll Free (877) 601-2828

Vote for only one choice in each race.

Fire Protection District

Ferry/Okanogan Fire Protection District #14 Emergency Medical Care and Ambulance Services Levy A six year levy

Will Ferry/Okanogan Fire Protection District#14 be authorized to impose a property tax levy in the amount of Fifty Cents (\$0.50) per One Thousand Dollars (\$1,000.00) of the assessed valuation of property in each year for six (6) consecutive years for the provision of Emergency Medical Care and Ambulance Services, to be levied for the District in 2023 for collection in 2024 and subsequent years through 2029?

- Yes
- No

Sample