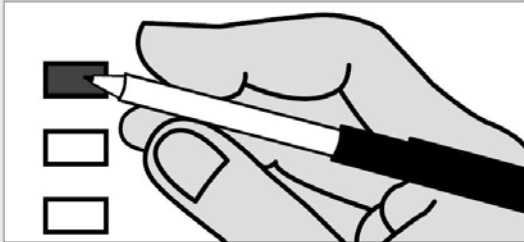


Instructions

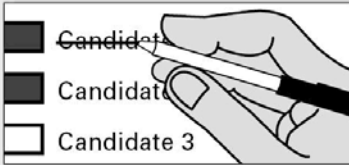
Making selections



Completely fill in the box to the left of your choice.

Voting more than once for a contest will be an over vote and no votes for that contest will be counted.

How to correct a mistake



Draw a line through the entire candidate's name.

You then have the option of making another choice.



Who donates to campaigns?

View contributors for candidates and measures

Public Disclosure Commission

www.pdc.wa.gov
 Toll Free (877) 601-2828

Keller School District No. 003

Replacement Educational Programs and Operation Levy

The Board of Directors of Keller School District No. 3 adopted Resolution No. 2019-0710, concerning a proposition to finance educational programs and operation expenses. This proposition would authorize the District to meet the educational needs of its students by levying the following excess taxes, in place of an expiring levy, on all taxable property within the District, for support of essential educational programs and operation expenses not funded by the State of Washington:

Collection Year	Approximate Levy Rate/\$1,000 Assessed Value	Levy Amount
2021	\$1.07	\$18,325
2022	\$1.07	\$18,325

all as provided in Resolution No. 2019-0710.
 Should this proposition be approved?

- Levy Yes
 Levy No

Ferry County Emergency Medical Services

Emergency Medical Care and Ambulance Services Levy

"Will the City of Republic be authorized to impose regular property tax levies of fifty cents (\$.50) per thousand dollars (\$1,000.00) of assessed valuation of property in each year for six (6) consecutive years for the provision of Emergency Medical Care and Services, to be levied for the City in 2020 for collection in 2021 and subsequent years through 2026?"

- Yes
 No

Ferry County Emergency Medical Services District #1

Emergency Medical Care and Ambulance Services Levy

"Will Ferry County Emergency Medical Services District No. 1 be authorized to impose a continuing property tax levy in the amount of Fifty Cents (\$.50) per One Thousand Dollars (\$1,000.00) of the assessed valuation of property in each year for six (6) consecutive years for the provision of Emergency Medical Care and Services, to be levied for the District in 2020 for collection in 2021 and subsequent years through 2026?"

- Yes
 No

Sample Ballot 12000010100011

10000002130

Sample Ballot

1683031287



100000002324

Sample Ballot12000010200018



This page intentionally left blank



1683031287

Sample Ballot