

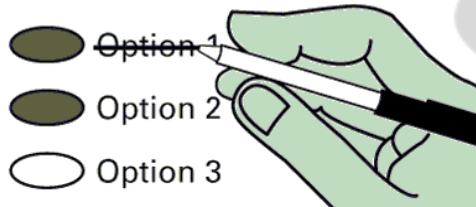
Instructions

Making selections



Completely fill in the oval to the left of your choice. Voting more than once for a contest will be an over vote and no votes for that contest will be counted.

How to correct a mistake



Draw a line through the entire candidate's name. You then have the option of making another choice.

Optional write-in



To add a candidate, fill in the oval provided to the left of "Write-in" and print the name clearly on the line.



Who donates to campaigns?

View contributors for candidates and measures

Public Disclosure Commission

www.pdc.wa.gov
Toll Free (877) 601-2828

Vote for only one candidate in each race.

READ: Each candidate for partisan office may state a political party that he or she prefers. A candidate's preference does not imply that the candidate is nominated or endorsed by the party, or that the party approves of or associates with that candidate.

Start Voting Here



Federal - Partisan Office

U.S. Senator

- Henry Clay Dennison**
(Prefers Socialist Workers Party)
- Mohammad Hassan Said**
(Prefers Democratic Party)
- John Guenther**
(Prefers Republican Party)
- Tiffany Smiley**
(Prefers Republican Party)
- Dan Phan Doan**
(States No Party Preference)
- Dr Pano Churchill**
(Prefers Democratic Party)
- Dave Saulibio**
(Prefers JFK Republican Party)
- Sam Cusmir**
(Prefers Democratic Party)
- Bill Hirt**
(Prefers Republican Party)
- Jon Butler**
(Prefers Independent Party)
- Bryan Solstin**
(Prefers Democratic Party)
- Martin D. Hash**
(States No Party Preference)
- Patty Murray**
(Prefers Democratic Party)
- Thor Amundson**
(Prefers Independent Party)
- Charlie (Chuck) Jackson**
(Prefers Independent Party)
- Naz Paul**
(Prefers Independent Party)
- Ravin Pierre**
(Prefers Democratic Party)
- Leon Lawson**
(Prefers Trump Republican Party)
- Write-In

Federal - Partisan Office

**Congressional District 5
U.S. Representative**

- Cathy McMorris Rodgers**
(Prefers Republican Party)
- Natasha Hill**
(Prefers Democratic Party)
- Sean Clynych**
(Prefers Republican Party)
- Ann Marie Danimus**
(Prefers Democratic Party)
- Write-In

State - Partisan Office

**Secretary of State
Unexpired 2 year term**

- Bob Hagglund**
(Prefers Republican Party)
- Kurtis Engle**
(Prefers Union Party)
- Marquez Tiggs**
(Prefers Democratic Party)
- Tamborine Borrelli**
(Prefers America First (R) Party)
- Steve Hobbs**
(Prefers Democratic Party)
- Keith L. Wagoner**
(Prefers Republican Party)
- Mark Miloscia**
(Prefers Republican Party)
- Julie Anderson**
(Prefers Nonpartisan Party)
- Write-In

Legislative - Partisan Offices

**Legislative District 7
State Senator**

- Shelly Short**
(Prefers Republican Party)
- Write-In

Turn ballot over to continue voting



Legislative - Partisan Offices

**Legislative District 7
State Representative Position 1**

- Lonny Ray Williams**
(Prefers Republican Party)
- Jacquelin Maycumber**
(Prefers Republican Party)
- _____
Write-In

**Legislative District 7
State Representative Position 2**

- Joel Kretz**
(Prefers Republican Party)
- _____
Write-In

County - Partisan Offices

COUNTY ASSESSOR

- Rachel D. Siracuse**
(Prefers Republican Party)
- _____
Write-In

COUNTY AUDITOR

- Dianna L Galvan**
(Prefers Republican Party)
- Liz Stinson**
(Prefers Republican Party)
- _____
Write-In

COUNTY CLERK

- Melanie Breezee**
(Prefers Republican Party)
- _____
Write-In

COUNTY COMMISSIONER #2

- Nathan Davis**
(Prefers Republican Party)
- _____
Write-In

PROSECUTING ATTORNEY

- Kathryn I. Burke**
(Prefers Republican Party)
- _____
Write-In

County - Partisan Offices

COUNTY SHERIFF

- Ray Maycumber**
(Prefers Republican Party)
- _____
Write-In

COUNTY TREASURER

- Shannon P Jensen**
(Prefers Republican Party)
- _____
Write-In

**Election of
Political Party Precinct
Committee Officer**

"For this office only: In order to vote for precinct committee officer, a partisan office, you must affirm that you are a Democrat or a Republican and may vote only for one candidate from the party you select. Your vote for a candidate affirms your affiliation with the same party as the candidate. This preference is private and will not be matched to your name or shared."

**South Lake Precinct
Committee Officer -
Republican
Vote for one**

- Ray Vipperman - Rep**
I affirm I am a Republican.
- Leslie Brooke Williams - Rep**
I affirm I am a Republican.