

Vote Both Sides

Primary Election
Ferry County, Washington
August 07, 2018

Sample Ballot

Precinct *Sample*

Instructions

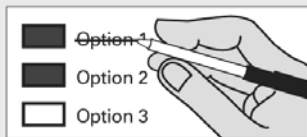
How to vote



Use a dark blue or black ink pen to completely fill in the box to the left of your choice.

Vote for one in each race. If you vote for more than one, no votes will be counted for that race.

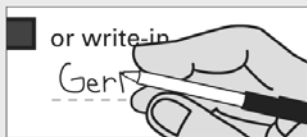
If you make a mistake



Draw a line through the entire measure response or candidate's name.

Then you may make another choice.

Optional write-in



To vote for a candidate not listed for that race, fill in the box to the left of "or write-in" and print the name on the dashed line.

Who donates to campaigns?
View contributors for candidates and measures

Public Disclosure Commission
www.pdc.wa.gov
Toll Free (877) 601-2828

Vote for only one candidate in each contest.

READ: Each candidate for partisan office may state a political party that he or she prefers. A candidate's preference does not imply that the candidate is nominated or endorsed by the party, or that the party approves of or associates with that candidate.

Federal: Partisan Office

U.S. Senator

- Thor Amundson (Prefers Independent Party)
- Dave Strider (Prefers Independent Party)
- Joey Gibson (Prefers Republican Party)
- Mike Luke (Prefers Libertarian Party)
- GoodSpaceGuy (Prefers Republican Party)
- Clint R. Tannehill (Prefers Democratic Party)
- Maria Cantwell (Prefers Democratic Party)
- Susan Hutchison (Prefers Republican Party)
- Brad Chase (Prefers FDFR Party)
- Tim Owen (Prefers Republican Party)
- Matthew D. Heines (Prefers Republican Party)
- Sam Wright (Prefers The Human Rights Party)
- Art Coday (Prefers Republican Party)
- John Orlinski (Prefers Republican Party)
- Charlie R Jackson (Prefers Independent Party)
- Keith Swank (Prefers Republican Party)
- Alex Tsimerman (Prefers StandupAmerica Party)
- RC Smith (Prefers Republican Party)
- Don L. Rivers (Prefers Democratic Party)
- Jennifer Gigi Ferguson (Prefers Independent Party)
- Steve Hoffman (Prefers Freedom Socialist Party)
- George H. Kalberer (Prefers Democratic Party)
- James Robert "Jimmie" Deal (Prefers Green Party)
- Roque "Rocky" De La Fuente (Prefers Republican Party)
- Jon Butler (Prefers Independent Party)
- Dave Bryant (Prefers Republican Party)
- Mohammad Said (Prefers Democratic Party)
- Matt Hawkins (Prefers Republican Party)
- Glen R Stockwell (Prefers Republican Party)

Federal: Partisan Office

U.S. Representative

Congressional District 5

- Cathy McMorris Rodgers (Prefers Republican Party)
- Dave Saulbio (Prefers Trump Populist Party)
- Jered Gavin Bonneau (Prefers Republican Party)
- Lisa Brown (Prefers Democratic Party)
- Kari Olavi Ilonummi (Prefers Republican Party)

State: Partisan Office

State Senator

- Shelly Short (Prefers Republican Party)
- Karen Hardy (Prefers Democratic Party)

Legislative: Partisan Offices

State Representative

District 7 Position 1

- Randall (Randy) Michaelis (Prefers Democratic Party)
- Jacquelin Maycumber (Prefers Republican Party)

State Representative

District 7 Position 2

- Joel Kretz (Prefers Republican Party)
- Crystal Oliver (Prefers Democratic Party)
- Mike Bell (Prefers Democratic Party)
- Christine A. Ives (States No Party Preference)

Continue voting next side



12000010100011

Sample Ballot

000000001102

Sample Ballot

1413031205

Vote Both Sides



12000010200018

Sample Ballot

000000001205



<p>Primary Election Ferry County, Washington August 07, 2018</p>		<p>Sample Ballot</p>
		<p>Precinct <i>Sample</i></p>
<p>County: Partisan Offices</p>	<p>Hospital District</p>	<p>Election of Political Party Precinct Committee Officer</p>
<p>County Assessor <input type="checkbox"/> Rachel D. Siracuse (Prefers Republican Party) <input type="checkbox"/></p>	<p>Public Hospital District No. 1 The Commissioners of Public Hospital District No. 1, Ferry County, adopted Resolution No. 2018 #2 concerning a proposition to finance operation and maintenance expenses. This proposition would authorize the District to maintain current levels of essential health care services by levying excess property taxes, at the estimated levy rate of \$.98 per \$1,000 of assessed value, upon all taxable property within the District for collection in 2019 to provide a total of \$406,874 for paying part of the District's long-term debt payments, all as provided in Resolution No. 2018 #2. Should this proposition be approved? <input type="checkbox"/> Levy Yes <input type="checkbox"/> Levy No</p>	<p>For this office only: In order to vote for precinct committee officer, a partisan office, you must affirm that you are a Democrat or a Republican and may vote only for one candidate from the party you select. Your vote for a candidate affirms your affiliation with the same party as the candidate. This preference is private and will not be matched to your name or shared.</p>
<p>County Auditor <input type="checkbox"/> Dianna Galvan (Prefers Republican Party) <input type="checkbox"/></p>		<p>Republic 1 Precinct Committee Officer <input type="checkbox"/> Loni Simone REP I affirm I am a Republican <input type="checkbox"/> Rachel D. Siracuse REP I affirm I am a Republican</p>
<p>County Clerk <input type="checkbox"/> Jean Bremner Booher (Prefers Democratic Party) <input type="checkbox"/></p>		
<p>County Commissioner No. 2 <input type="checkbox"/> Dixie Moore (Prefers Republican Party) <input type="checkbox"/> Shawn Baxter (Prefers Republican Party) <input type="checkbox"/> Nathan Davis (Prefers Republican Party) <input type="checkbox"/> Angel Glenewinkel (Prefers Democrat Party) <input type="checkbox"/></p>		
<p>Prosecuting Attorney <input type="checkbox"/> Kathryn I. Burke (Prefers Republican Party) <input type="checkbox"/></p>		
<p>County Sheriff <input type="checkbox"/> Ray Maycumber (Prefers Republican Party) <input type="checkbox"/> Darin Odegaard (Prefers Republican Party) <input type="checkbox"/></p>		
<p>County Treasurer <input type="checkbox"/> Rochelle L. Rodak (Prefers Republican Party) <input type="checkbox"/></p>		

Sample Ballot

1413031205

