

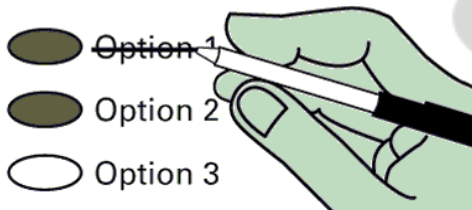
Instructions

Making selections



Completely fill in the oval to the left of your choice. Voting more than once for a contest will be an over vote and no votes for that contest will be counted.

How to correct a mistake



Draw a line through the entire candidate's name. You then have the option of making another choice.

Optional write-in



To add a candidate, fill in the oval provided to the left of "Write-in" and print the name clearly on the line.

Start Voting Here



Advisory Votes

Advisory Vote 39 Engrossed Substitute Senate Bill 5974

The legislature increased, without a vote of the people, the tax on aircraft fuel from 11 cents to 18 cents per gallon, costing \$14 million in its first ten years, for government spending.

This tax increase should be:

- Repealed
 Maintained

Advisory Vote No. 40 Engrossed Substitute House Bill 2076

The legislature imposed, without a vote of the people, premiums on "transportation network companies" to provide workers compensation to their drivers, costing an indeterminate amount in its first ten years, for government spending.

This tax increase should be:

- Repealed
 Maintained

Vote for only one candidate in each race.

READ: Each candidate for partisan office may state a political party that he or she prefers. A candidate's preference does not imply that the candidate is nominated or endorsed by the party, or that the party approves of or associates with that candidate.

Federal - Partisan Offices

U.S. Senator

- Patty Murray**
(Prefers Democratic Party)
- Tiffany Smiley**
(Prefers Republican Party)
- Write-In _____

Congressional District 5 U.S. Representative

- Cathy McMorris Rodgers**
(Prefers Republican Party)
- Natasha Hill**
(Prefers Democratic Party)
- Write-In _____

State - Partisan Office

Secretary of State Unexpired 2 year term

- Steve Hobbs**
(Prefers Democratic Party)
- Julie Anderson**
(Prefers Nonpartisan Party)
- Write-In _____



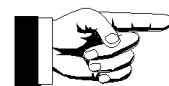
Who donates to campaigns?

View contributors for candidates and measures

Public Disclosure Commission

www.pdc.wa.gov
Toll Free (877) 601-2828

Turn ballot over to continue voting



Legislative - Partisan Offices

**Legislative District 7
State Senator**

- Shelly Short
(Prefers Republican Party)
- _____
Write-In

**Legislative District 7
State Representative Pos. 1**

- Jacquelin Maycumber
(Prefers Republican Party)
- Lonny Ray Williams
(Prefers Republican Party)
- _____
Write-In

**Legislative District 7
State Representative Pos. 2**

- Joel Kretz
(Prefers Republican Party)
- _____
Write-In

County - Partisan Offices

County Assessor

- Rachel D. Siracuse
(Prefers Republican Party)
- _____
Write-In

County Auditor

- Dianna L Galvan
(Prefers Republican Party)
- Liz Stinson
(Prefers Republican Party)
- _____
Write-In

**County Clerk
Short & Full**

- Melanie Breezee
(Prefers Republican Party)
- _____
Write-In

County Commissioner #2

- Nathan Davis
(Prefers Republican Party)
- Robert P. Dean Jr
(Prefers Independent Party)
- _____
Write-In

County - Partisan Offices

Prosecuting Attorney

- Kathryn I. Burke
(Prefers Republican Party)
- _____
Write-In

County Sheriff

- Ray Maycumber
(Prefers Republican Party)
- _____
Write-In

County Treasurer

- Shannon P Jensen
(Prefers Republican Party)
- _____
Write-In

**Judicial
Nonpartisan Offices**

**Supreme Court
Justice Position #01**

- Mary I. Yu
- _____
Write-In

**Supreme Court
Justice Position #05**

- Barbara Madsen
- _____
Write-In

**Supreme Court
Justice Position #06**

- G. Helen Whitener
- _____
Write-In

District Court Judge

- Tom Brown
- _____
Write-In

County - Nonpartisan Office

Public Utility Commissioner #1

- Chris Kroupa
- _____
Write-In

School District

**Proposition No. 1
Inchelium School
District No. 70
Replacement Educational
Programs and Operation Levy**

The Board of Directors of Inchelium School District No. 70 adopted Resolution No. 02-22-23, concerning a proposition for a replacement levy for education. This proposition would authorize the District to meet the educational needs of its students by levying the following excess taxes, in place of an expiring levy, on all taxable property within the District, for support of essential educational programs and operation expenses not funded by the State of Washington:

Collection Year	Estimated Levy Rate/\$1,000 Assessed Value	Levy Amount
2023	\$1.58	\$130,000
2024	\$1.56	\$135,000
2025	\$1.54	\$140,000

all as provided in Resolution No. 02-22-23.
Should this proposition be approved?

- Levy Yes
- Levy No