

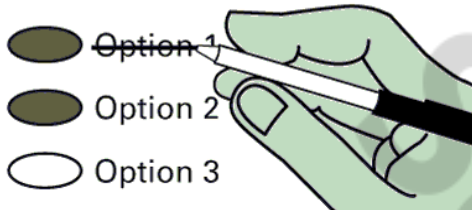
**Instructions**

**How to Vote**



Use a dark blue or black ink pen to completely fill in the oval to the left of your choice. Vote for one in each race. If you vote for more than one, no votes will be counted for that race.

**How to correct a mistake**



Draw a line through the entire measure response or candidate's name. Then you may make another choice.

**Optional write-in**



To vote for a candidate not listed for that race, fill in the oval provided to the left of "Write-in" and print the name clearly on the line.



**Who donates to campaigns?**

View contributors for candidates and measures

Public Disclosure Commission

www.pdc.wa.gov  
Toll Free (877) 601-2828

**Vote for only one candidate in each race.**

**State Measure**

**Referendum Measure No. 90**

The legislature passed Engrossed Substitute Senate Bill 5395 concerning comprehensive sexual health education. This bill would require school districts to adopt or develop, consistent with state standards, comprehensive age-appropriate sexual health education, as defined, for all students, and excuse students if their parents request.

**Should this bill be:**

- Approved
- Rejected

**Advisory Votes**

**Advisory Vote No. 32  
Engrossed Substitute  
Senate Bill 5323**

The legislature imposed, without a vote of the people, a retail sales tax on pass-through charges retail establishments collect for specified carryout bags, costing \$32,000,000 in its first ten years, for government spending.

**This tax increase should be:**

- Repealed
- Maintained

**Advisory Vote No. 33  
Substitute Senate Bill 5628**

The legislature imposed, without a vote of the people, a tax on heavy equipment rentals to consumers by heavy equipment rental property dealers, costing \$103,000,000 in its first ten years, for government spending.

**This tax increase should be:**

- Repealed
- Maintained

**Advisory Vote No. 34  
Engrossed Substitute Bill 6492**

The legislature increased, without a vote of the people, the business and occupation tax rate for certain businesses, while reducing certain surcharges, costing \$843,000,000 in its first ten years, for government spending.

**This tax increase should be:**

- Repealed
- Maintained

**Advisory Vote**

**Advisory Vote No. 35  
Engrossed Senate Bill 6690**

The legislature increased, without a vote of the people, the business and occupation tax on manufacturers of commercial airplanes, including components or tooling, costing \$1,024,000,000 in its first ten years, for government spending.

**This tax increase should be:**

- Repealed
- Maintained

**Proposed Constitutional Amendment**

**Engrossed Senate  
Joint Resolution No. 8212**

The legislature has proposed a constitutional amendment on investment of public funds. This amendment would allow public money held in a fund for long-term care services and supports to be invested by governments as authorized by state law, including investments in private stocks.

**Should this constitutional amendment be:**

- Approved
- Rejected

**Federal - Partisan Office**

**United States  
President / Vice President**

- Joseph R. Biden / Kamala D. Harris  
*Democratic Party Nominees*
- Donald J. Trump / Michael R. Pence  
*Republican Party Nominees*
- Jo Jorgensen / Jeremy "Spike" Cohen  
*Libertarian Party Nominees*
- Howie Hawkins / Angela Walker  
*Green Party Nominees*
- Gloria La Riva / Sunil Freeman  
*Socialism and Liberation Party Nominees*
- Alyson Kennedy / Malcolm M. Jarrett  
*Socialist Workers Party Nominees*
- 

Write-In \_\_\_\_\_

**Turn ballot over to continue voting**



**Read: Each candidate for President and Vice President is the official nominee of a political party. For other partisan offices, each candidate may state a political party that he or she prefers. A candidate's preference does not imply that the candidate is nominated or endorsed by the party, or that the party approves of or associates with that candidate.**

**Federal - Partisan Office**

**U.S. Representative  
Congressional District 5**

- Cathy McMorris Rodgers  
*(Prefers Republican Party)*
- Dave Wilson  
*(Prefers Democratic Party)*
- \_\_\_\_\_  
Write-In

**State - Partisan Offices**

**Governor**

- Jay Inslee  
*(Prefers Democratic Party)*
- Loren Culp  
*(Prefers Republican Party)*
- \_\_\_\_\_  
Write-In

**Lt. Governor**

- Denny Heck  
*(Prefers Democratic Party)*
- Marko Liias  
*(Prefers Democratic Party)*
- \_\_\_\_\_  
Write-In

**Secretary of State**

- Kim Wyman  
*(Prefers Republican Party)*
- Gael Tarleton  
*(Prefers Democratic Party)*
- \_\_\_\_\_  
Write-In

**State Treasurer**

- Mike Pellicciotti  
*(Prefers Democratic Party)*
- Duane A. Davidson  
*(Prefers Republican Party)*
- \_\_\_\_\_  
Write-In

**State Auditor**

- Pat (Patrice) McCarthy  
*(Prefers Democratic Party)*
- Chris Leyba  
*(Prefers Republican Party)*
- \_\_\_\_\_  
Write-In

**Attorney General**

- Bob Ferguson  
*(Prefers Democratic Party)*
- Matt Larkin  
*(Prefers Republican Party)*
- \_\_\_\_\_  
Write-In

**Commissioner of Public Lands**

- Hilary Franz  
*(Prefers Democratic Party)*
- Sue Kuehl Pederson  
*(Prefers Republican Party)*
- \_\_\_\_\_  
Write-In

**State - Nonpartisan Office**

**Superintendent of  
Public Instruction**

- Chris Reykdal
- Maia Espinoza
- \_\_\_\_\_  
Write-In

**State - Partisan Office**

**Insurance Commissioner**

- Mike Kreidler  
*(Prefers Democratic Party)*
- Chirayu Avinash Patel  
*(Prefers Republican Party)*
- \_\_\_\_\_  
Write-In

**Legislative - Partisan Offices**

**State Representative  
District 7 Position 1**

- Jacquelin Maycumber  
*(Prefers Republican Party)*
- Georgia D. Davenport  
*(Prefers Democratic Party)*
- \_\_\_\_\_  
Write-In

**State Representative  
District 7 Position 2**

- Joel Kretz  
*(Prefers Republican Party)*
- JJ Wandler  
*(Prefers Independent Party)*
- \_\_\_\_\_  
Write-In

**County - Partisan Offices**

**County Commissioner #1**

- Derek Gianukakis  
*(Prefers Republican Party)*
- Rick Diamond  
*(Prefers Republican Party)*
- \_\_\_\_\_  
Write-In

**County Commissioner #3  
Short & Full 4 Year Term**

- Michael Heath  
*(Prefers Republican Party)*
- Howard (Howie) Hambleton  
*(Prefers Republican Party)*
- \_\_\_\_\_  
Write-In

**County - Nonpartisan Office**

**Public Utility  
Commissioner #3**

- Doug Aubertin
- \_\_\_\_\_  
Write-In

**Judicial - Nonpartisan Office**

**Supreme Court Justice  
Position #03  
Short & Full 6 Year Term**

- Dave Larson
- Raquel Montoya-Lewis
- \_\_\_\_\_  
Write-In

**Judicial - Nonpartisan Offices**

**Supreme Court Justice  
Position #04**

- Charles W. Johnson
- \_\_\_\_\_  
Write-In

**Supreme Court Justice  
Position #06  
2 Year Unexpired Term**

- Richard S. Serns
- G. Helen Whitener
- \_\_\_\_\_  
Write-In

**Supreme Court Justice  
Position #07**

- Debra L. Stephens
- \_\_\_\_\_  
Write-In

**Court of Appeals, Division 3,  
District 1, Judge Position 2**

- Marshall Casey
- Tracy Arlene Staab
- \_\_\_\_\_  
Write-In

**Superior Court Judge  
Position 1**

- Patrick A. Monasmith
- \_\_\_\_\_  
Write-In

**Superior Court Judge  
Position 2**

- Jessica Taylor Reeves
- \_\_\_\_\_  
Write-In