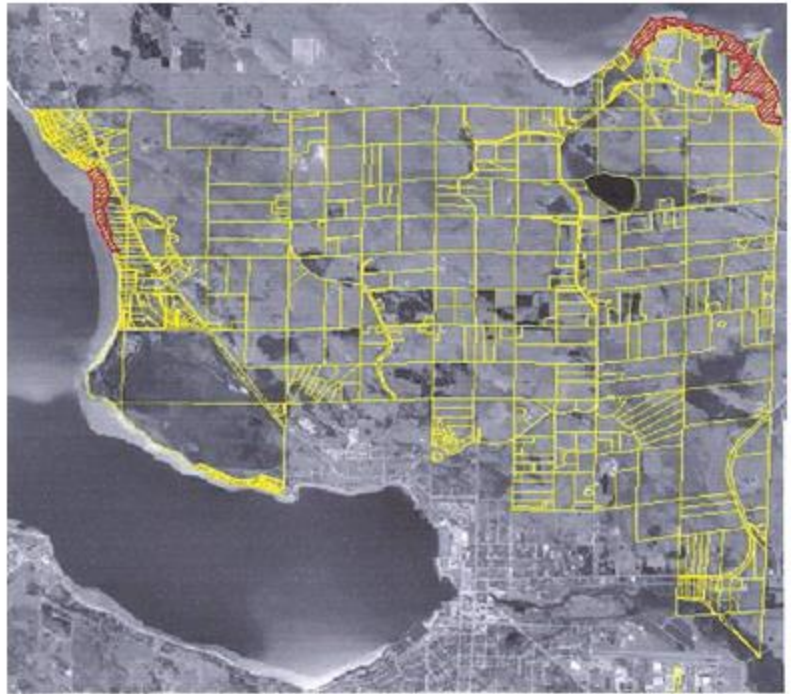


Steep Slope Areas: Areas mapped in the Charlevoix County Soil Survey as having slopes from 18% to 25%, 18% to 50%, or 25% to 50% slopes. See also: [Environmentally Sensitive Areas](#) regarding 'Construction on Steep Slopes'

Section 3.07– Waterfront setback Provision

- A. Except as otherwise indicated in this Ordinance, no structures (excluding dock(s), shoreline protection structures, and waterfront view platforms) shall be erected or constructed less than fifty (50) feet (one hundred (100) feet for lots outlined on the Evangeline Township Shoreline Steep Slopes Map Figure 3-2, additional steep slope map detail on pages III-27 & III-28) upland from the high-water level elevation of any lake or river.

Evangeline Township Shoreline Steep Slopes Map




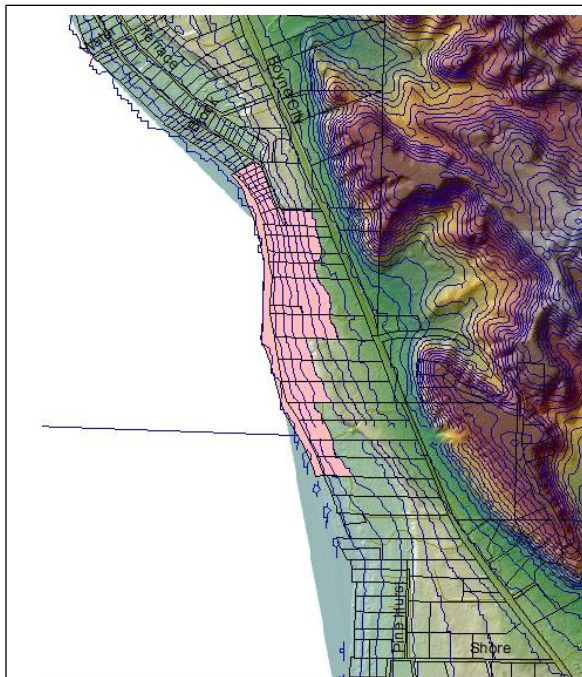
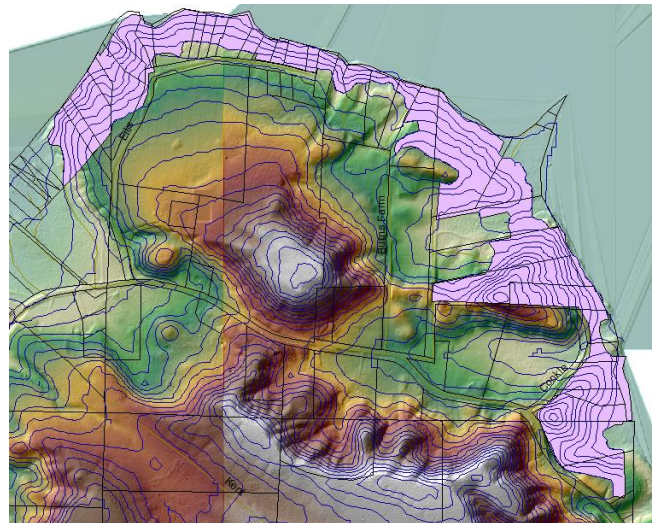
 Shoreline Steep Slopes

Figure 3-2



Lake Charlevoix

Pink shaded areas indicate shoreline steep slopes areas



Walloon Lake