

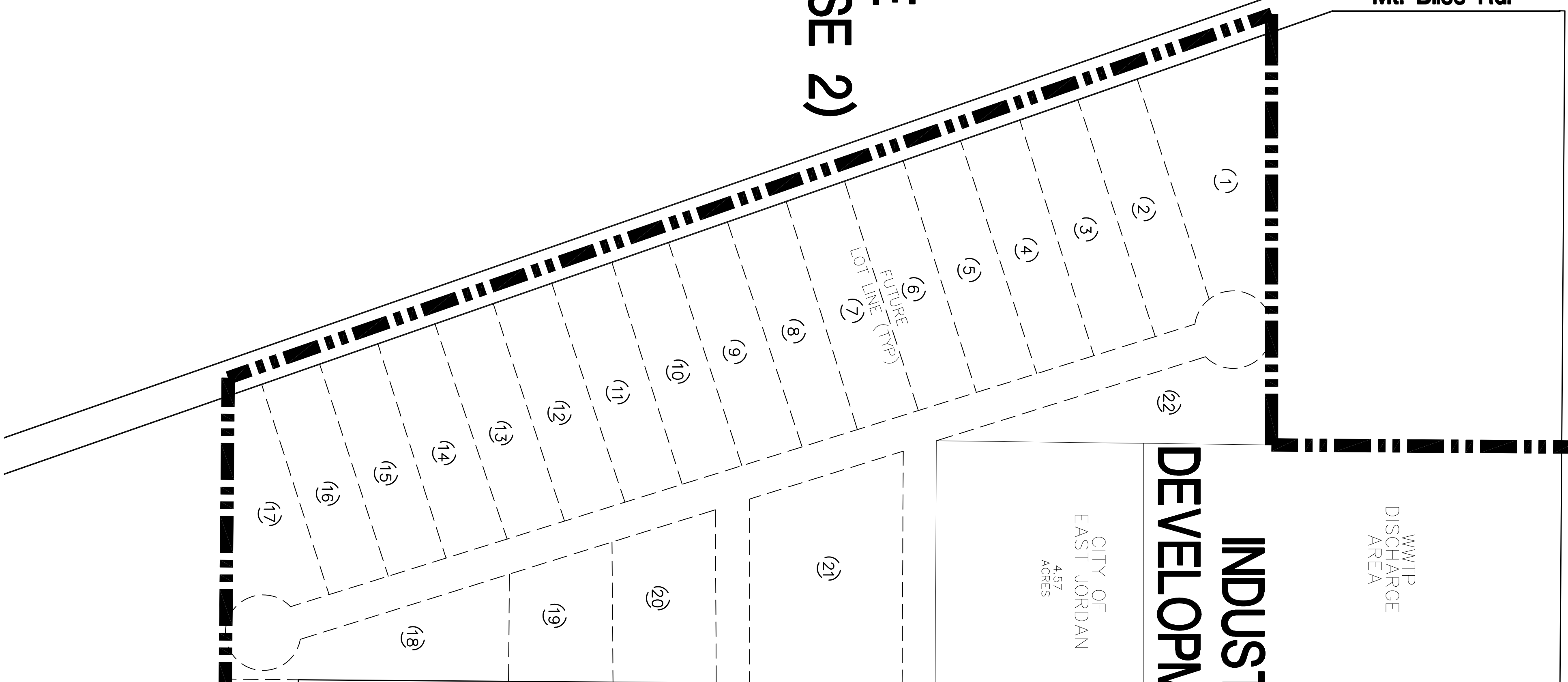
Rogers Rd.

M-32

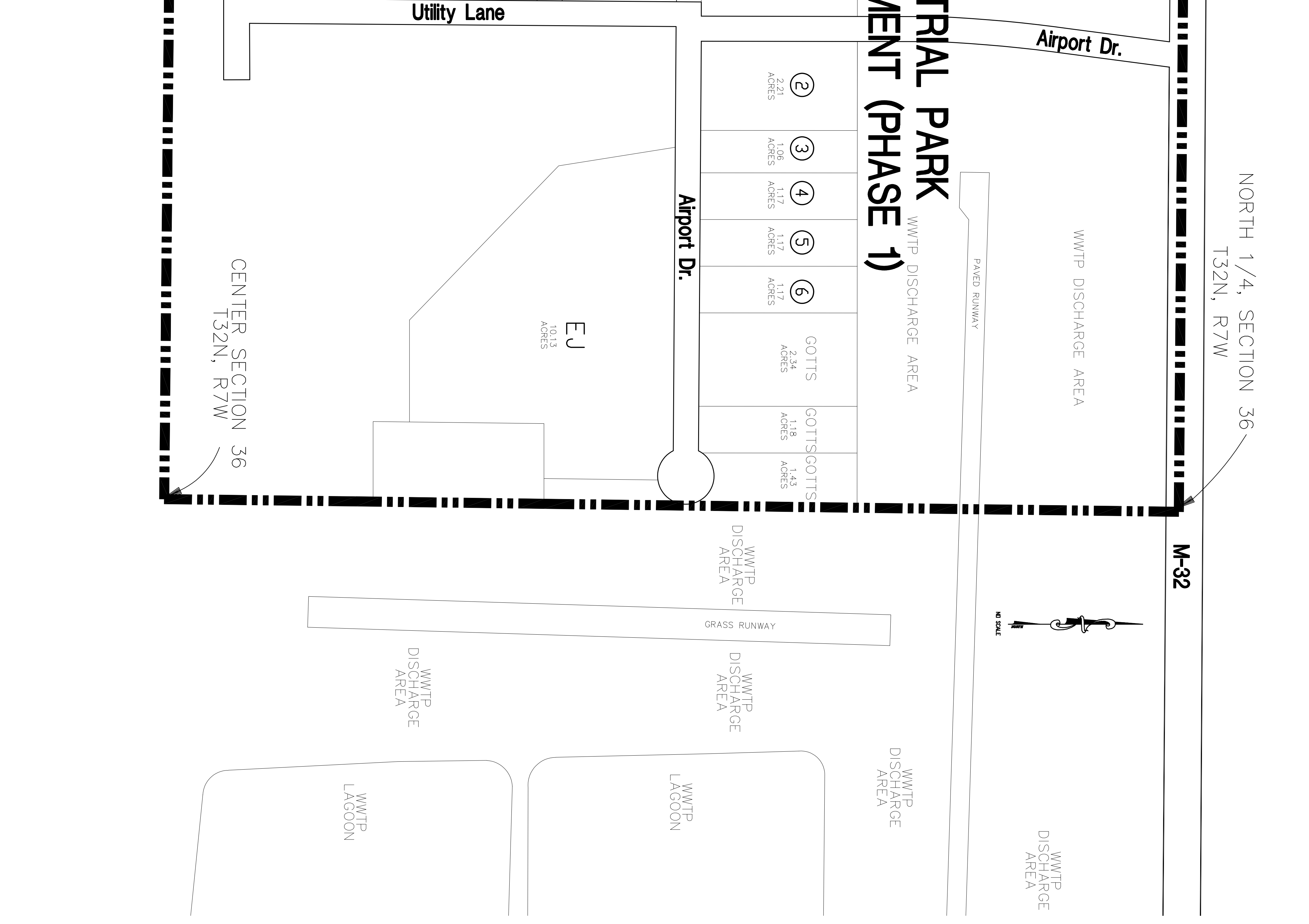
Mt. Bliss Rd.

# FUTURE 45-ACRE DEVELOPMENT (PHASE 2)

M-32



# INDUSTRIAL PARK DEVELOPMENT (PHASE 1)



NORTH 1/4, SECTION 36  
T32N, R7W

CENTER SECTION 36  
T32N, R7W

Utility Lane

Airport Dr.

Airport Dr.

EJ  
10.13  
ACRES

CITY OF  
EAST JORDAN  
4.57  
ACRES

②  
2.21  
ACRES

③  
1.06  
ACRES

④  
1.17  
ACRES

⑤  
1.17  
ACRES

⑥  
1.17  
ACRES

GOTTS  
2.34  
ACRES

GOTTSGOTTS  
1.18  
ACRES

GOTTSGOTTS  
1.43  
ACRES

PAVED RUNWAY

GRASS RUNWAY

NO SCALE

REVISIONS	PROPOSED SITE PLAN
<b>CITY OF EAST JORDAN</b> <b>INDUSTRIAL PARK MASTER PLAN</b> CHARLEVOIX COUNTY, MICHIGAN	
106 W Allegan St, Suite 500 Lansing, MI 48906 / 517.371.1200 123 West Main Street, Suite 200 Caydon, MI 49735 / 888.735.8131 648 Monroe Avenue NW, Suite 210 Grand Rapids, MI 49503 / 616.454.9414 121 Ludington Street Escanaba, MI 49829 / 828.233.9360 211 E. Water Street Kalamazoo, MI 49007 / 269.216.0222	
SCALE:	DATE: JULY 2018
PROJ. #:	180518
SHEET	1