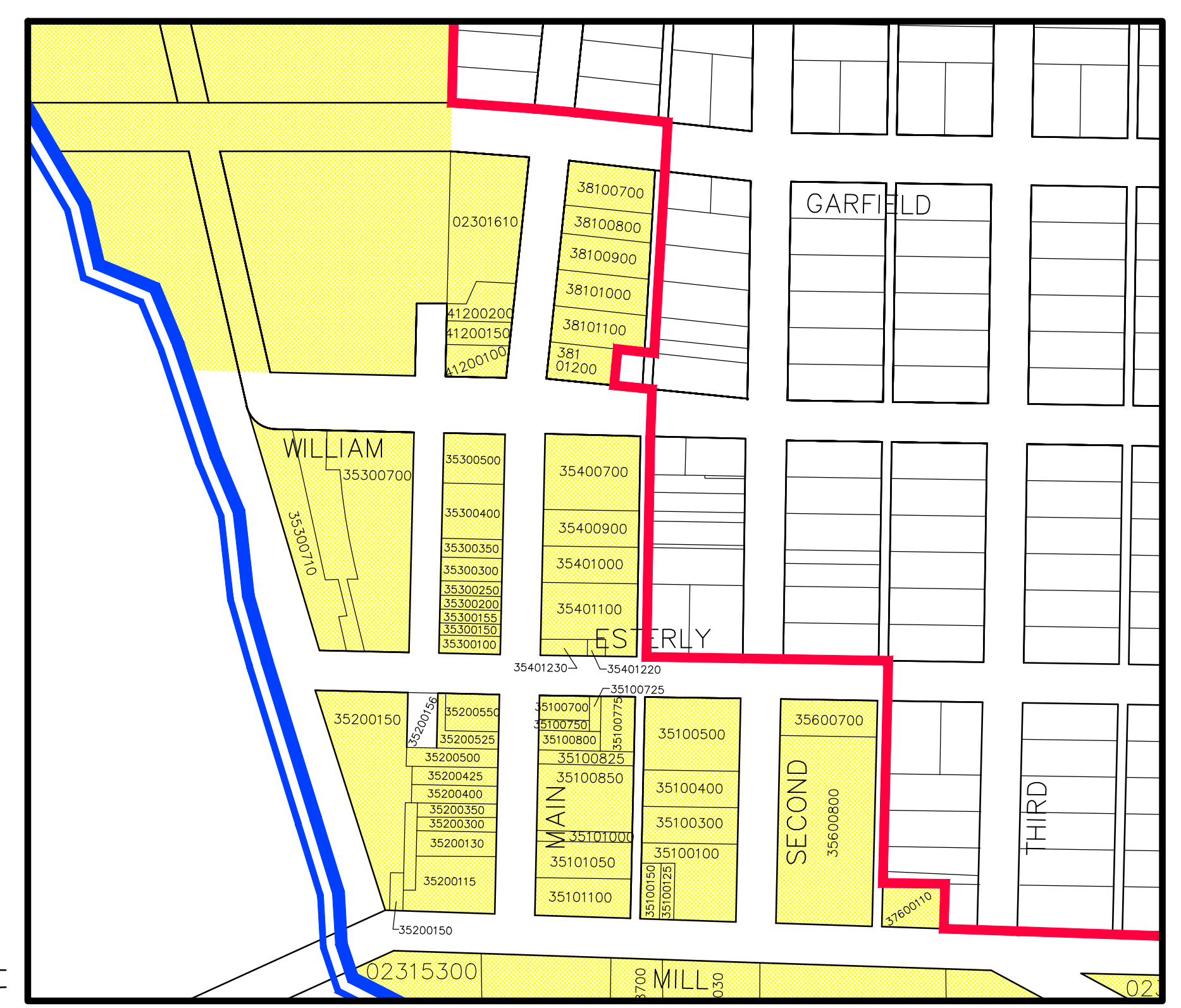
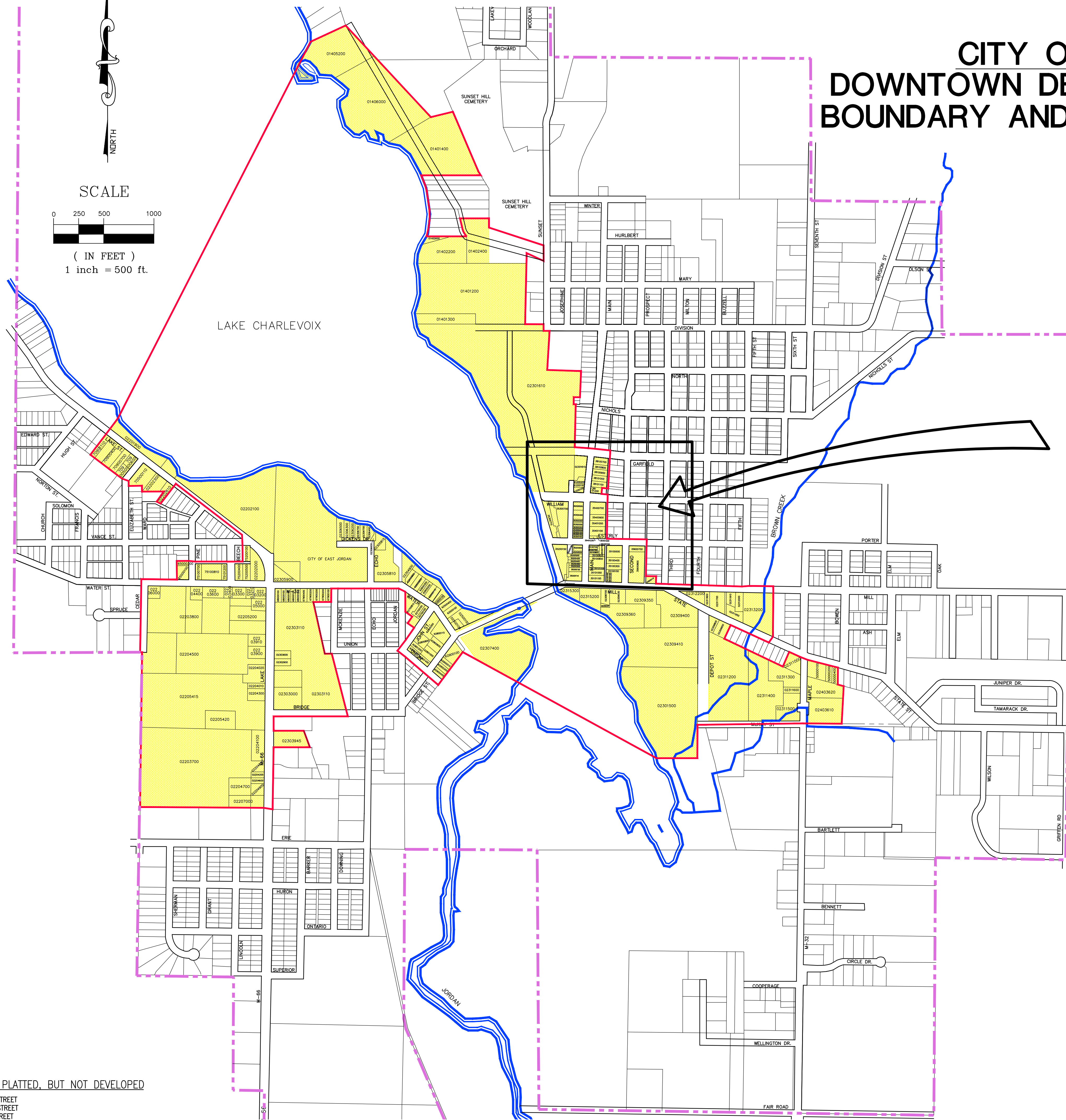


CITY OF EAST JORDAN DOWNTOWN DEVELOPMENT AUTHORITY BOUNDARY AND PARCEL NUMBER MAP



SCALE
0 250 500 1000
(IN FEET)
1 inch = 500 ft.

- CITY LIMITS
- DOWNTOWN DEVELOPMENT AUTHORITY DISTRICT LEGAL BOUNDARY
- DOWNTOWN DEVELOPMENT AUTHORITY DISTRICT PARCELS



STREETS PLATTED, BUT NOT DEVELOPED
SOLOMON STREET
SUPERIOR STREET
CHURCH STREET
WARD STREET



123 West Main Street, Suite 200
Gaylord, MI 49735 / 989.732.8131
Updated-November 15, 2021