

**X**

# **PARKS, RECREATION & OPEN SPACE**

**"To be able to use leisure intelligently  
will be the last product of an intelligent civilization."**

*Bertrand Russell*

## 10.0 PARKS, RECREATION & OPEN SPACE

### 10.1 GOALS

*Goals: Provide adequate, safe and accessible recreational resources for the residents of the town. Maintain the current high quality of the town's park facilities and preserve the town's remaining open spaces.*

### 10.2 EXISTING CONDITIONS

#### A. Town Parks:

The town operates  
10 public parks and  
5 "vest pocket" parks.

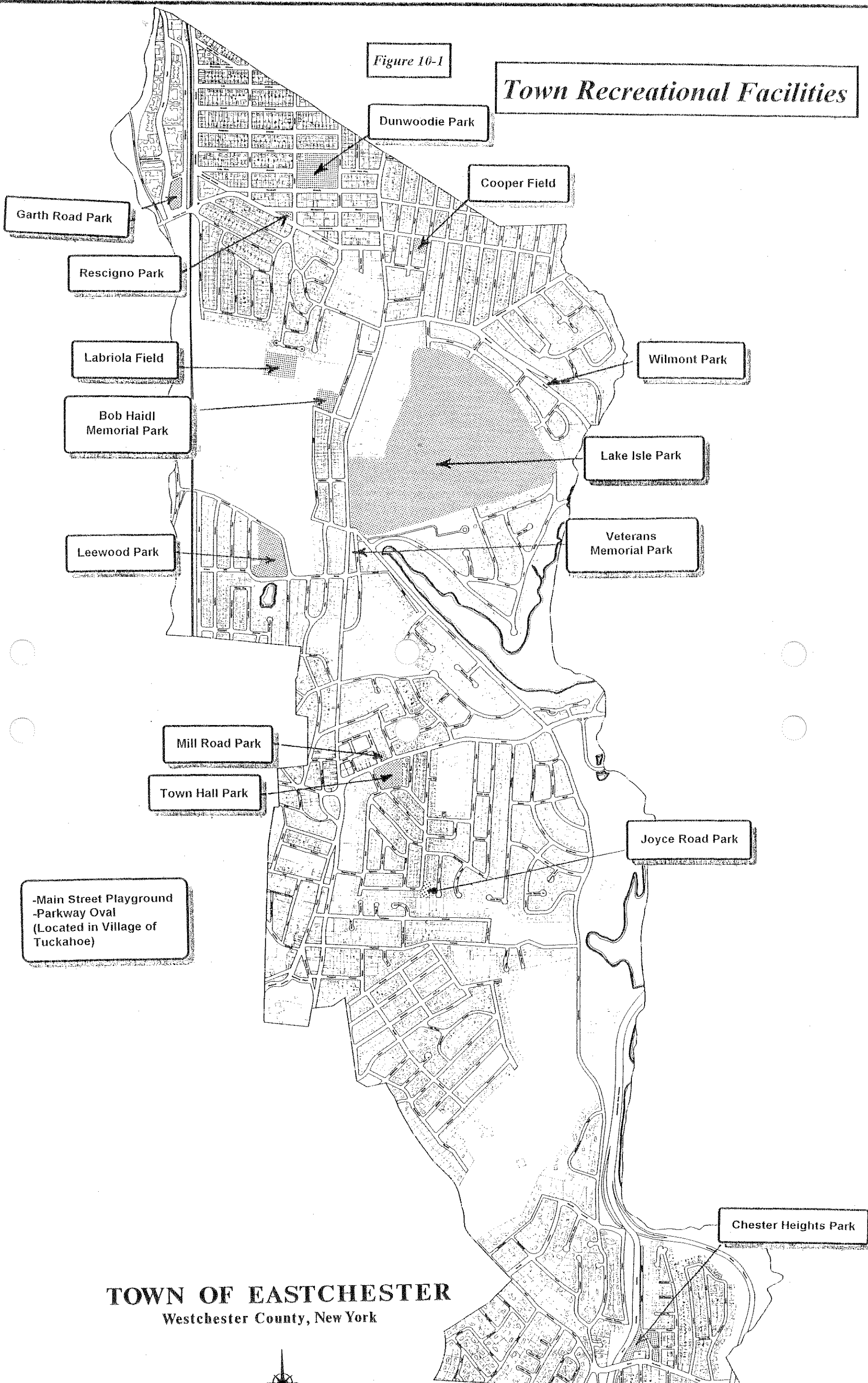
The Town of Eastchester programs and or operates 10 public parks (two of which are located within the Village of Tuckahoe) and 5 smaller "vest pocket" parks (Figure 10-1). Additionally, the Recreation and Parks Department, through the cooperation of the Eastchester, Tuckahoe and Bronxville school districts, utilizes a number of school fields and facilities. The town also acquired Lake Isle Park, which today is a self supporting recreational facility.



( Garth Road Park)

Figure 10-1

# Town Recreational Facilities



**TOWN OF EASTCHESTER**  
Westchester County, New York



**Parks:**

**Chester Heights Park** (Oregon Avenue) - A five-acre park containing a softball field, swings, basketball court, slides, sandbox, climbing apparatus, picnic tables and benches (leased from Westchester County).

**Cooper Field** (Locust Avenue) - This park is approximately four acres in size and supports an open playfield, a softball field and a tot lot.

**Dunwoodie Park** (Dunwoodie Street) - This is a seven-acre park consisting of Saggese Field, which is an official pony-colt baseball field, and a large playfield for soccer, softball, track or football. The park includes swings, climbing apparatus, benches and a basketball court.

**Garth Road Park** (Garth Road) - A one and one quarter acre park containing O'Rourke Field, which is an official Little League field, climbing apparatus, swings, fitness court, slides, benches, two basketball courts, checker table and picnic tables.

**Joyce Road Park** (Joyce Road) - This is a small park on two-thirds of an acre containing a small playfield, climbing apparatus and benches.

**Labriola Field** (end of Burnham Road) - A three-acre park supporting two little league size ballfields that can be used for adult softball. The park also has a picnic area with stone fireplaces, a nature area and two tot lots.

**Leewood Park** (Leewood Drive) - This nearly five-acre park contains six all-weather tennis courts, two paddle tennis courts, a basketball court, a small softball field, a volleyball court and horseshoe court.

**Main Street Playground** (Main Street and Marbledale Road in Tuckahoe) - This park is a recently developed three-acre park located in and maintained by the Village of Tuckahoe, but programmed by Eastchester. It contains two full basketball courts with lights, a tennis court, a climber, swings, sand box and benches.

**Parkway Oval** (Consulate Drive in Tuckahoe) - This is a 14-acre park located in Tuckahoe, but owned and maintained by the Town of Eastchester. It supports a baseball and softball field, soccer fields, all-purpose playground and a full basketball court. The park also has a Wells Fargo fitness trail and fitness court.

**Bob Naindl Park** (Burnham Road and Rescigno Drive) - There are two fields on this four and one half acre park which can accommodate softball, soccer or football. Picnic tables are also available under the trees.

#### **Vest Pocket Parks:**

**Memorial Park** (California Road) - This one half acre park contains plantings, monuments and benches.

**Rescigno Park** (Brook Street) - Plantings, lawn and benches are on this one quarter acre park.

**Mill Road Park** (Mill Road) - A lovely Victorian gazebo serves as the centerpiece of this one-quarter acre park across from Town Hall which also contains benches, picnic tables, and a small grassy play area.

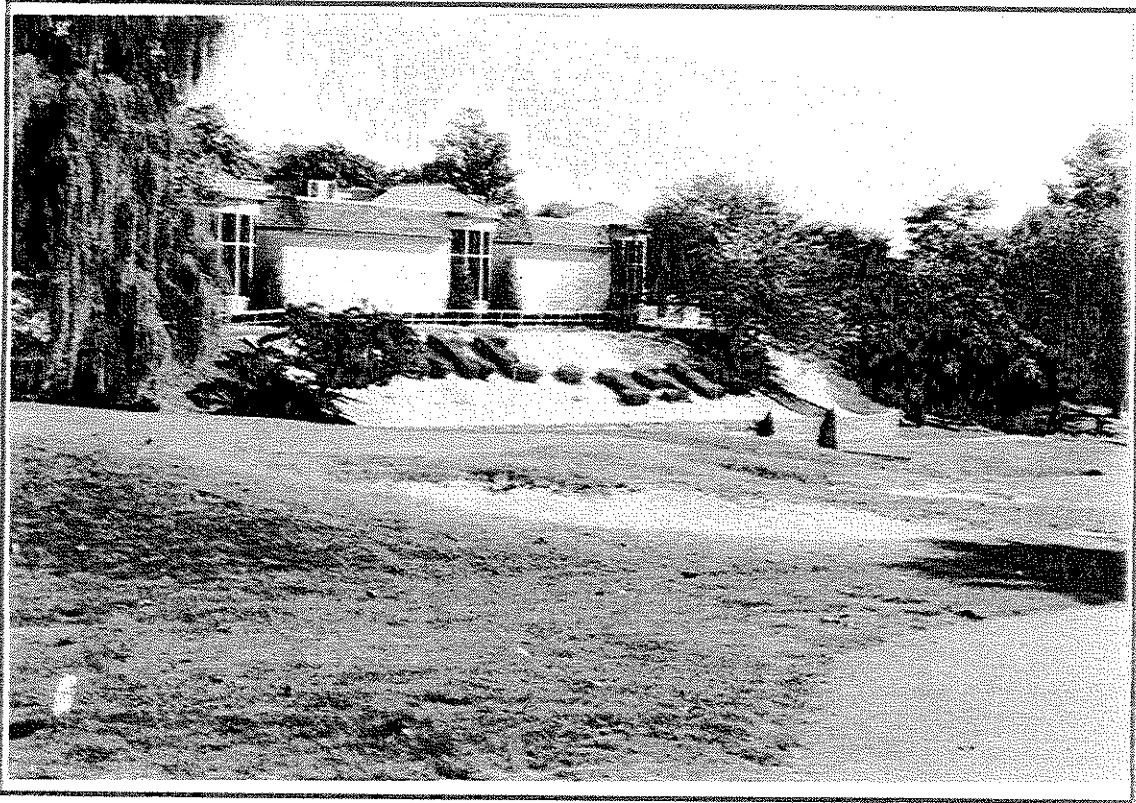
**Town Hall Park** (Mill Road) - The Town Hall is situated here among beautifully landscaped rock gardens, paths and benches. It is the site for the Town's summer outdoor concerts and other recreational events.

**Wilmont Park** (Wilmot Road) - There are plantings and a sitting area on this one-half acre of grass.

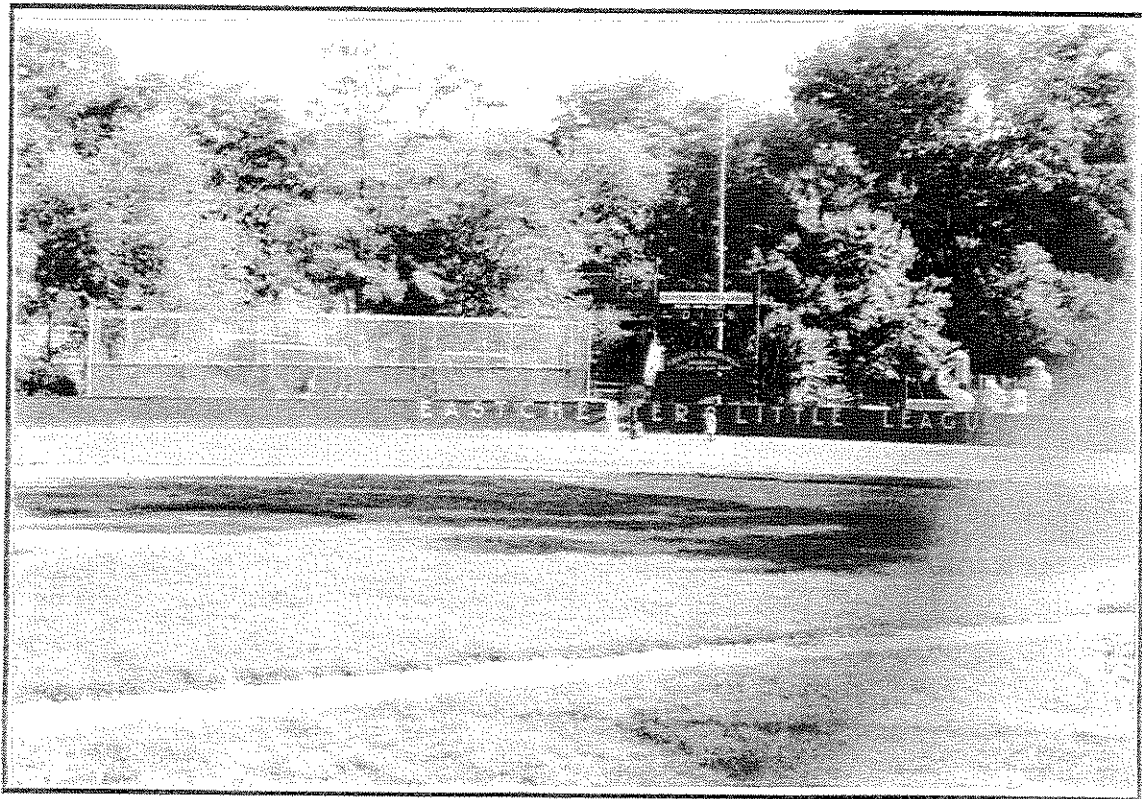
#### **Other Facilities:**

**Lake Isle Park** - Acquired by the Town of Eastchester in 1979, the Lake Isle Park today operates as an independent, self supporting recreational facility. The Park is not operationally dependent upon the town. A hierarchical fee schedule does provide preference to town residents (including Tuckahoe and Bronxville). The facility provides an 18 hole golf course, club house with banquet facilities, five pools, eight tennis courts, open space and playground apparatus.

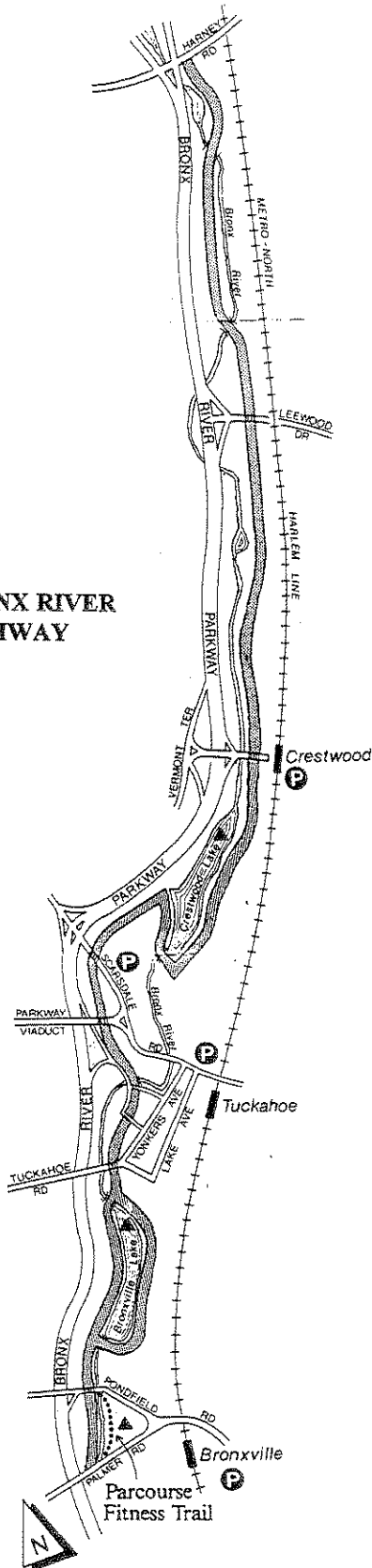
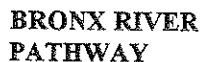
Lake Isle Park, acquired by the town in 1979, represents a unique and successful method of providing public recreational resources.



(Lake Isle Park)



(Garth Road Park Ballfield)



**Hoover Sanctuary** - This property is a 10.82 acre, primarily undeveloped, open space resource. It is owned by the Town and leased to the county. The only improvement on the site is a Girl Scout Cabin and associated parking area. The site hosts the Hoover Sanctuary nature preserve.

**School District Facilities** - Through the cooperation of the Eastchester, Tuckahoe, and Bronxville school districts, the Recreation and Parks Department also uses the Greenvale School and fields, Anne Hutchinson School and fields, Eastchester Middle and Senior High School and fields, Cottle School and Tuckahoe High School fields, and several fields and gyms in Bronxville.

Eastchester's parks and recreation programs operate under the direction of the town's Recreation and Parks Commission. The day-to-day direction of the programs and resources is the responsibility of the Superintendent of Recreation and Parks. The Recreation and Parks Department employs 11 full-time and 200 seasonal employees. The department's 1994 budget is \$689,756. 71% of the budget is devoted to administrative costs and salaries, and 29% to operations and maintenance.

The Recreation and Parks Department offers an impressive array of programs and activities throughout the year (Figure #10-2):

### B. County Parks:

**i. Bronx River Pathway:**

The Bronx River Pathway is located within the Bronx River Reservation, an 807 acre linear park created as an adjunct to the construction of the Bronx River Parkway that was opened in 1925.

The Pathway follows many of the original paths along the Bronx River. Three sections of the Pathway have been developed, including a 3.6 mile section between Palmer Road in Bronxville and Harney Road in Eastchester.



## ii. Twin Lakes County Park:

Twin Lakes County Park is a 220 acre park that sits astride the Eastchester/New Rochelle boundary. This park is devoted to passive recreation and supports hiking trails, bridle paths, fishing, ice skating and nature study.

**Figure 10-2**  
**Recreation & Parks Department Programs**

Youth Programs	Youth Summer Programs	Adult Programs	Adult Summer Programs
Courses: Crafts, Baby Sitting, Baseball, Running, Culinary Arts, C.P.R., Basic Life Support, First Aid	Rainbow Camp	Coed Volleyball	Open Basketball Under the Lights
Sandlot Baseball Program	Sports & Fun Camp	Exercise Walking and Jogging	Outdoor Summer Concerts
Shoestring Puppet Theater	Girls Softball Camp	Men's Softball League	Open Tennis
Alcohol Free Night Spot ( <i>The Spot</i> )	Bronxville Day Camp	Woman's Softball League	
Eastchester Youth Soccer League	Playground Program	Horseshoes	
Tuckahoe Youth Association	Swimming at lake Isle Pool	Outdoor Volleyball	
Eastchester Little League	Summer Theater	Tennis Backboard	
Eastchester Baseball League	Summer Basketball Tournament	Tap Dancing	
Poster Painting Contest	Weight Lifting and Conditioning	Fabric Painting	
Goblin Call		Town Hall Community Theater	
Rag-A-Muffin Parade		Theater trips	
Vacation Programs		Westchester Broadway Theater	
Pop Warner Football		Body Shaping	
Letters To Santa		Paddle Tennis	
Roller Skating		Volleyball	
Instructional Basketball League		Open Basketball	
Open Basketball			



Eastchester supports  
over 800 acres of  
open space resources.

### C. Open Space:

Open space is a rather ambiguous concept to rigorously define. The open space of a community provides a psychological reprieve from existing patterns of development. Open space need not be large swaths of undisturbed wilderness. Rather, open space need only provide a break, or a chance to step outside our well ordered constraints, and roam, lounge or simply take in our surroundings. The best open spaces are those that offer dramatic satisfaction to our common sensibilities.

Eastchester, commonly perceived as a developed community, supports significant open space resources. Town-wide, only 13.66 acres of land is vacant and undeveloped. The town's open space resources however, amount to over 802.2 acres and include not only vacant land, but public parks, public and private school lands, golf courses, as well as private lands held in an open state.



*(Horesback Riding at Twin Lakes Farm)*

**Figure 10-3**

**PUBLIC PARKS**

Figure 10-3  
Open Space Inventory Property Evaluation

Property Designation	Property Name	Property Location	Aesthetics	Environmental Significance	Historic/Cultural Significance	Recreational Significance	Buffer	Neighborhood Significance
PK 24	Hutch River	Hutch River						
PK 25	Town Hall	Town Hall						
<b>SCHOOL PROPERTIES</b>								
PS 1	Greenvale School HS/Jr HS	Rescigno/Maple						
PS 2		Rte 22						
PS 3	Hutchinson School	Mill Rd						
PS 4	Waverly Early Learning	Main/Hall						
PS 5	Tuckahoe HS	Siwanoy Blvd						
PS 6	Cottle School	Siwanoy Blvd						
PS 7	Immaculate Conception	Rte 22/Midland						
<b>PRIVATE PARCELS</b>								
PV 1	Shopping Ctr	Rte 22/Parkway						
PV 2	Undev	Rte 22/Locust						
PV 3	Undev	Rte 22/Brook						
PV 4	Leewood Golf Course	Leewood Dr						
PV 5	Shore Club	Lakeshore/Calif						
PV 6	Interlaken Beach	California Rd						
PV 7	Interlaken Coop	California Rd						
PV 8	Undev	Rte 22						
PV 9	MTA ROW	MTA ROW						
PV 10	Siwanoy Golf Course	Siwanoy Blvd						
PV 11	Water St.	Water St						
PV 12	Undev	Calif/Stewart						
PV 13	Lake Imisfree	Calif/Water						

10-1 Develop a prioritized action plan to assure the preservation of Eastchester's most important open space resources.

The Eastchester Conservation Advisory Council (ECAC) compiled a thorough inventory of the town's open space resources, and produced a map of the resources. The following matrix (Figure #10-3) summarizes that inventory, and offers an evaluation of each site so future decisions regarding open spaces can be better addressed.

### 10.3 POLICIES

10-1 Develop a prioritized action plan to assure the preservation of Eastchester's most important open space resources.

10-2 Designate all significant open spaces as Critical Environmental Areas (CEA's), assuring that an action on the site will be designated a Type I Action for SEQR.

10-3 Establish the town's right of first refusal for all CEAs and significant open space resources.

10-4 As a matter of town policy, any significant open space resource must be preserved for current and future generations of Eastchester residents and identified on an official map.

10-5 Open space resources are not static, and the town can actively work to improve these resources through enhancement and maintenance programs.

10-6 At the discretion of the Planning Board development applications which have open space implications will be referred to the ECAC which will be charged with reviewing projects in the context of preserving significant open space resources.