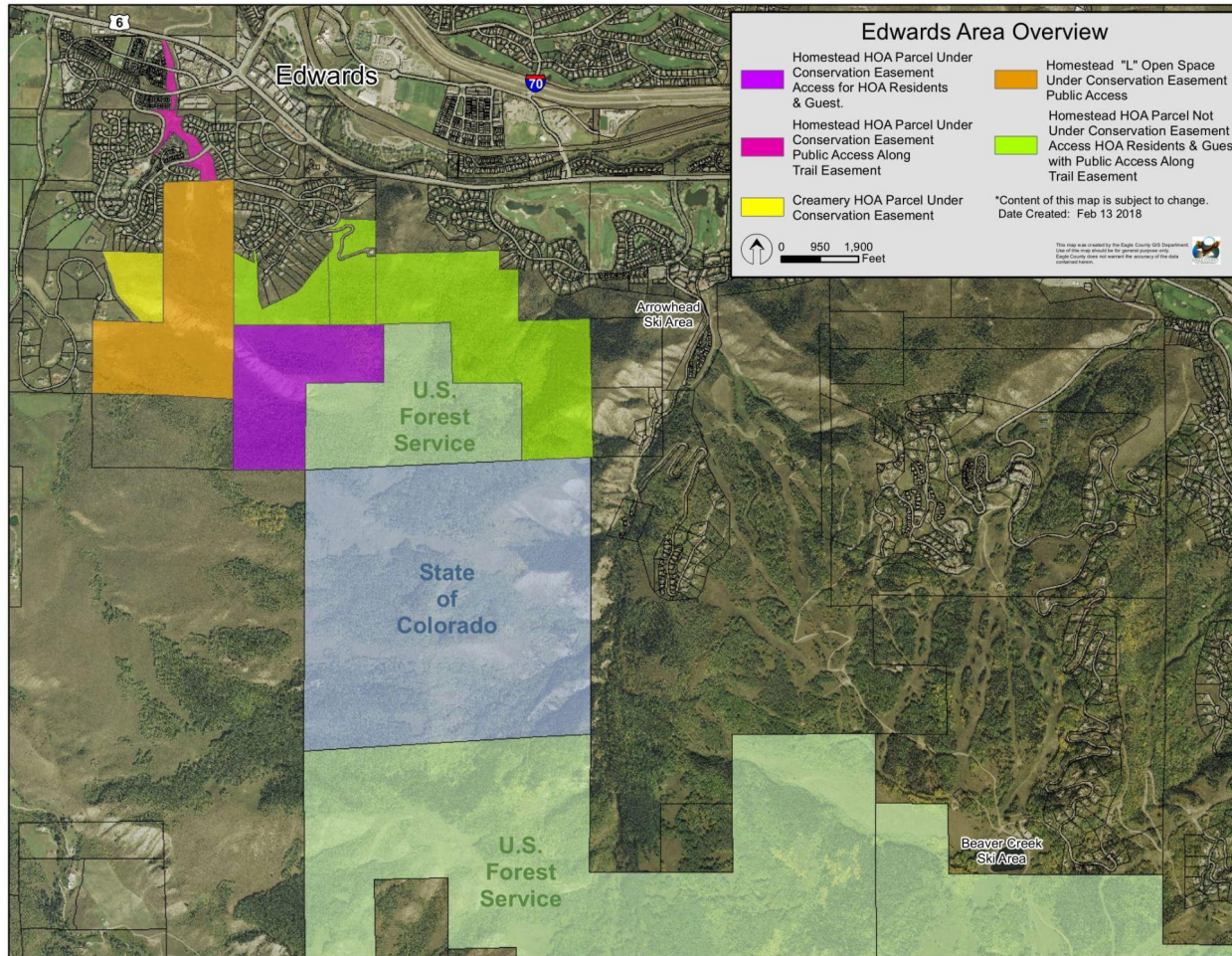


Eagle County Open Space Homestead L



Seasonal Area Wildlife Voluntary Closure Information

Compiled by: Eagle County Open Space and Natural Resources, Colorado Parks and Wildlife, Eagle Valley Land Trust



Contact information:

Eagle County Open Space and Natural Resources

- Marcia Gilles, Director.
marcia.gilles@eaglecounty.us
- Peter Suneson, Open Space Manager.
peter.suneson@eaglecounty.us
- Phil Kirkman, Ranger and Senior Open Space Specialist.
phillip.kirkman@eaglecounty.us
- 970-328-8698

Colorado Parks and Wildlife

- Layton Stutsman, Edwards Area District Wildlife Manager.
layton.stutsman@state.co.us
- 720-626-9051

Eagle Valley Land Trust

- Jessica Foulis, Executive Director.
jfoulis@evlt.org
- 970-748-7654

Effects of Recreation on Animals Revealed as Widespread through a Global Systematic Review

Courtney L. Larson , Sarah E. Reed, Adina M. Merenlender, Kevin R. Crooks

Published: December 8, 2016 • <https://doi.org/10.1371/journal.pone.0167259>

- ▶ Reviewed over 274 articles
 - Majority (59%) had negative effects

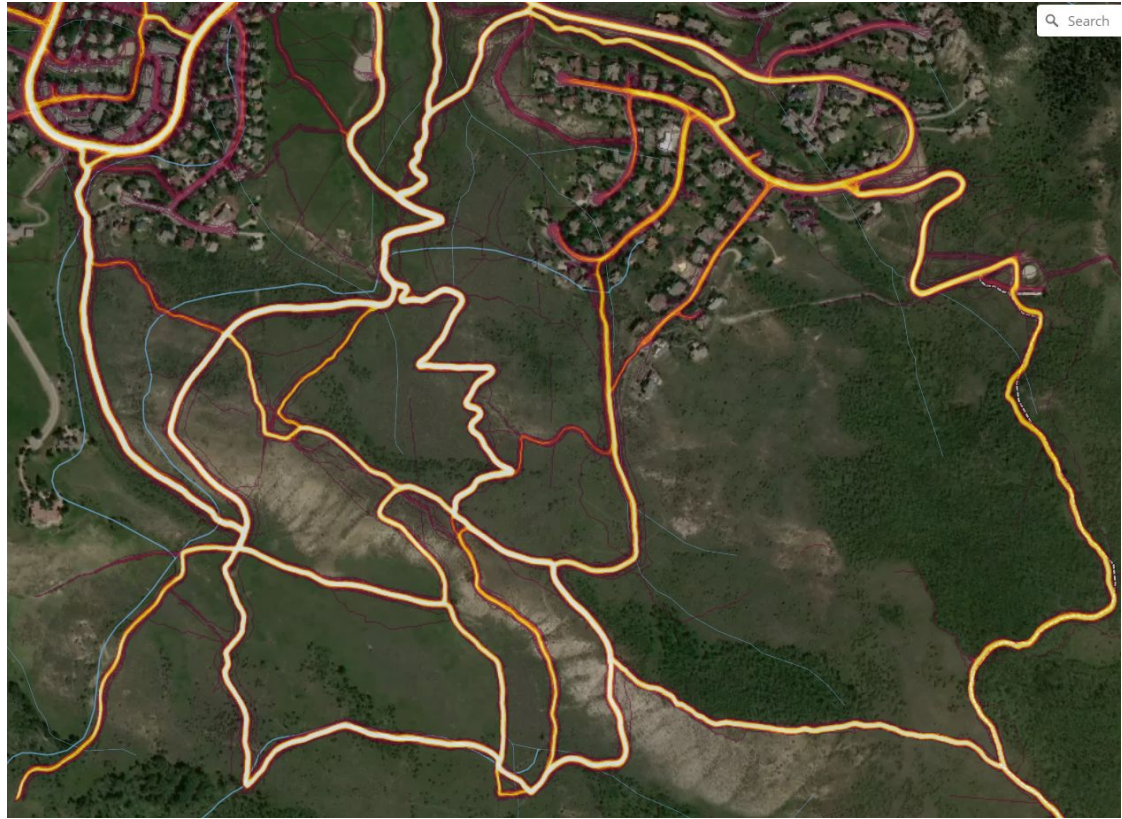
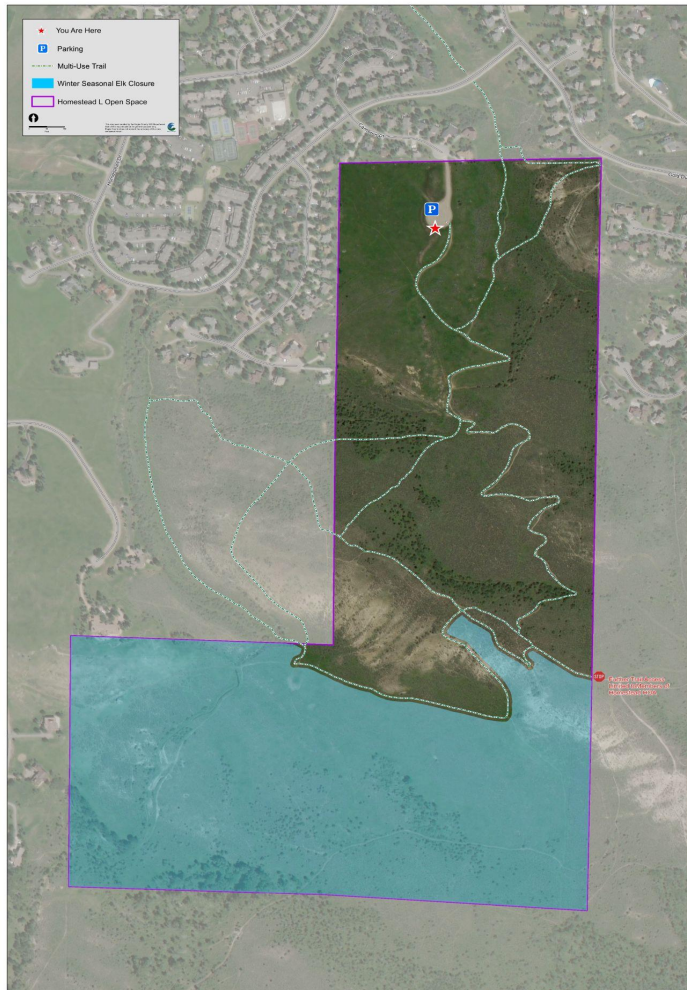
- **Homestead Open Space and Eagle County Open Space in Severe Elk Winter Range, Winter Concentration Area for Elk, and an Elk Movement Corridor. Homestead is also extremely close to an Elk Production Area (Map and Definitions on Next Slide).**
- **USFS, BLM, CPW owned and managed lands, Eagle County Properties, Local Municipalities (like Vail, Avon, Eagle), and local communities (like Cordillera, Berry Creek, Beaver Creek, etc.) all implement seasonal trail closures and area closures where necessary, and have been for decades.**
- **CPW has observed significant declines in elk populations the Roaring Fork Herd (DAU: E-16), particularly in Game Management Unit 045 (which is where Homestead is). CPW has been collecting data annually for decades.**
- **Homestead is one piece of the puzzle in a county-wide effort to find a balance between human recreation and the health of our natural resources.**



Winter Concentration Area: That part of the winter range of elk where densities are at least 200% greater than the surrounding winter range density during the average five winters out of ten from the first heavy snowfall to spring green-up, or during a site specific period of winter as defined for each Data Analysis Unit.

Severe Winter Range: That part of the range of a species where 90 percent of the individuals are located when the annual snowpack is at its maximum and/or temperatures are at a minimum in the two worst winters out of ten. The winter of 1983-84 is a good example of a severe winter.

Movement Corridor: A subjective indication of the general direction of the movements of migratory ungulate herds.

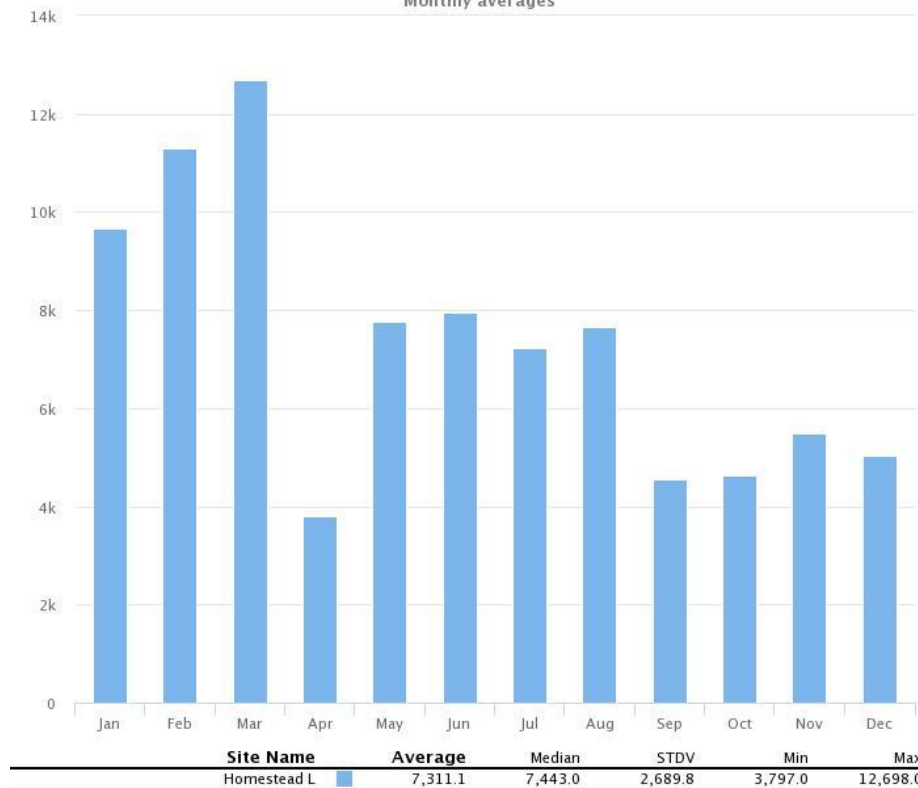


Strava heat map: <https://www.strava.com/heatmap>

Months of the year

2021-10-02 to 2022-10-18

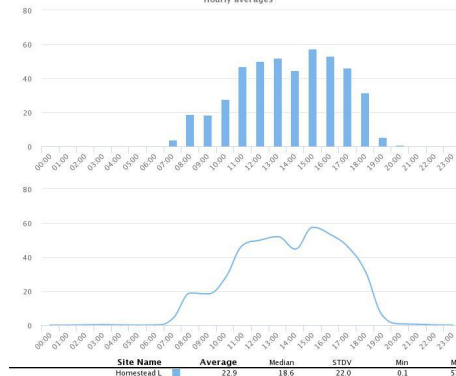
Monthly averages



Hours of the day

2022-02-06 to 2022-03-03

Hourly averages

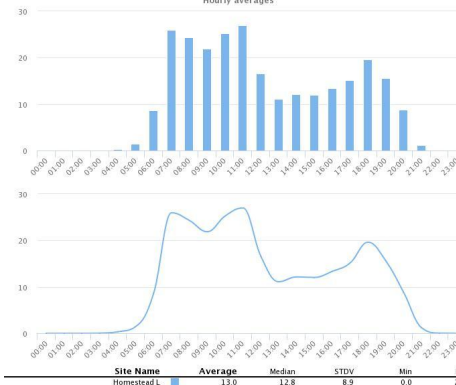


2/6/22-3/3/22 (winter)

Hours of the day

2022-06-06 to 2022-07-01

Hourly averages



6/6/22-7/1/22 (summer)

Disclaimer: Raw data. Likely 10-20% decrease in actual use

Conservation Easement- Eagle Valley Land Trust

Homestead L Conservation Easement

•**Purpose:** The purpose of this Easement is to preserve and protect the Conservation Values in perpetuity in accordance with I.R.C. § 170(h), Treas. Regs. § 1.170A-14, and C.R.S. § 38-30.5-101 , et seq. ("Purpose").

•**Conservation Values**

- Relatively Natural Habitat (deer, bear, elk, migratory songbirds, raptors and small mammals)
- Open Space - Scenic Enjoyment and Significant Public Benefit
- Public Recreation or Education

Conservation Easement cont.. & Management Plan

•Public Access

•Public Access. Nothing contained herein shall be construed as affording the public access to any portion of the Property. The Parties acknowledge that Grantor intends to permit access to the Property, in accordance with the Management Plan, for use by the general public for purposes permitted by this Easement. In the event of any closure of all or a portion of the Property to the general public, the Property is still subject to Existing Third Party Easements

Management Plan

•Hours Open

•All portions of the Property may be closed seasonally or as determined by Eagle County for maintenance or to address wildlife or other matters affecting the Property.