

# BENEFITS OF CONSTRUCTION AND DEMOLITION RECYCLING

Saves money by reducing project disposal and transportation costs.

Provides a premium service of recycling to your current project or bid.

Reduces greenhouse gas emissions and other pollutants by reducing need to extract raw materials and their associated transportation.

Current estimates show that if all concrete and asphalt pavement generated annually in the United States were recycled, it would save the energy equivalent of **1 billion gallons of gasoline** or the removal of more than **1 million cars** from the road.

–June 2007

*Construction Business  
Owner Magazine*



# DUPAGE COUNTY

ENVIRONMENTAL DIVISION

## Additional Resources

### U.S. EPA: Sustainable Materials Management

[www.epa.gov/smm/sustainable-management-construction-and-demolition-materials](http://www.epa.gov/smm/sustainable-management-construction-and-demolition-materials)

### IL EPA: Construction and Demolition Debris

[www.epa.illinois.gov/topics/small-business/publications/construction-debris/index](http://www.epa.illinois.gov/topics/small-business/publications/construction-debris/index)

### Construction & Demolition Recycling Association

[www.cdrecycling.org/](http://www.cdrecycling.org/)

**534 million tons** of C&D debris were generated in the United States, in 2014—**more than twice the amount of generated municipal solid waste.**

*–Advancing Sustainable Materials  
Management: 2014 Fact Sheet*

The C&D recycling industry was projected to be responsible for the direct support of **27,900 jobs** in the US in 2014.

*–CDRA 2014 Executive Summary*



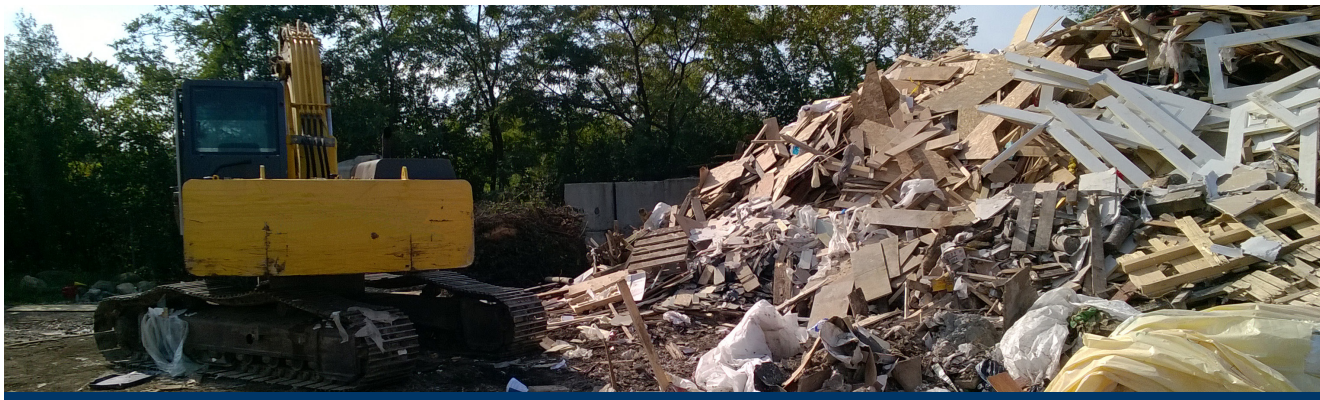
# DUPAGE COUNTY

ENVIRONMENTAL DIVISION



## CONSTRUCTION AND DEMOLITION DEBRIS RECYCLING

(630) 407-6700



## Construction and Demolition (C&D)

Construction and demolition debris includes materials generated during construction or demolition of built infrastructure.

### What are typical C&D materials?

- Concrete, brick
- Wood (treated & untreated)
- Drywall
- Metals
- Vinyl
- Plastics
- Roofing materials
- Electrical wiring (nonhazardous)
- Piping
- Glass including windows
- Reclaimed asphalt pavement
- Salvaged building components
- Earth or rock clearing from construction sites
- Corrugated cardboard from construction activities

## How do you recycle C&D material?

1. Estimate the amount and type of material you will generate from your site.
2. Contact a waste hauler or local C&D recycling site.
3. Rent a roll-off container to dedicate for C&D material only.
4. Verify with hauler what is allowed in the roll-off.
5. Fill roll-off with construction or demolition materials only.
6. When done or the roll-off is full, call for service.

## C&D Recycling Tips

When renting a roll-off container be sure to also rent an adequate waste container for on-site garbage or other items that are not allowed in the C&D container.

Reuse or repurpose materials to avoid the cost of new construction materials.

## Local C&D Sites

Several local companies in or near DuPage provide service and trucking specifically for C&D.

Crush-Crete, Inc.  
(Addison)  
630-627-1713

Murco Recycling  
(La Grange Park)  
(Salvage & Reuse Only)  
708-352-4111

WasteBox, Inc.  
(Lemont)  
1-800-499-4099

West DuPage Recycling & Transfer, Inc.  
(West Chicago)  
630-377-7000

*For more recycling options visit the Construction & Demolition Recycling Association at [www.cdrecycling.org](http://www.cdrecycling.org)*

## Contact Us

DuPage County  
Environmental Division  
421 N. County Farm Rd., Wheaton  
630-407-6700  
[recycle@dupageco.org](mailto:recycle@dupageco.org)